

ATAS International, Inc.

Sustainable Solutions For A Better Future



STOCK • MATTE • PREMIUM
NATURAL • WOODLAND • OXIDE

COLOR CHART

A leading manufacturer of sustainable building envelope technology, ATAS utilizes cool pigment paint on many color offerings. Our products reflect infrared radiation, which results in cooler surface temperatures, and maximum fade resistance.

Many of the ATAS products meet the qualifications for potential green building certification credits and industry ratings. See ATAS website for specific SRI values (www.atas.com/sri). Information on ATAS' sustainable products can be found at www.atas.com/sustainability.

70% PVDF finish carries a limited warranty against fading and chalking. ATAS coated materials are non-staining and virtually maintenance free. Any surface residue is easily removed with conventional cleaning solutions or detergents.



STOCK COLORS

70% PVDF resin based coatings provide high-performance durability for exterior and interior applications. These coatings are designed to resist fading, chalking, and abrasion. Meets the requirement of AAMA 2605-13 for aluminum substrates.



Black (02)



Classic Bronze (01)



Medium Bronze (03)



Hartford Green (27)



Forest Green (11)



Teal (19)



Hemlock Green (30)



Patina Green (12)



Chocolate Brown (04)



Boysenberry (25)



Redwood (07)



Mission Red (08)



Sierra Tan (09)



Rawhide (15)



Concord Cream (05)



Sandstone (06)



Regal Blue (18)



Slate Blue (21)



Siam Blue (14)



Rocky Grey (16)



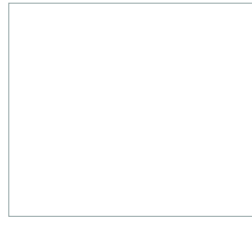
Charcoal Grey (62)



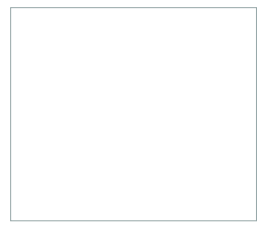
Slate Grey (20)



Dove Grey (13)



Ascot White (10)



Bone White (26)



www.atas.com/colors

MATTE FINISH

Designed to simulate natural metal hues in a high-performance 70% PVDF paint system.



Matte Black (32)



Char Brown (29)



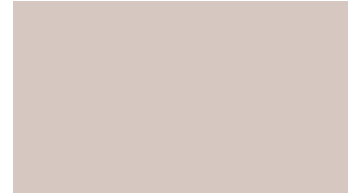
Thunder Grey (34)



Anchor Grey (37)



Ash Grey (33)



Almond (36)

PREMIUM FINISH

70% PVDF resin based coatings, with premium pigmentation to obtain metallic or deep color for desired aesthetics.



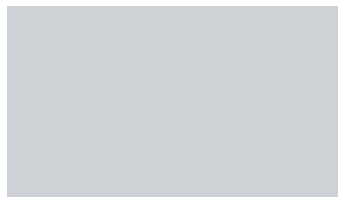
Antique Patina (24)



Champagne (31)



Coppertone (23)



Titanium (35)



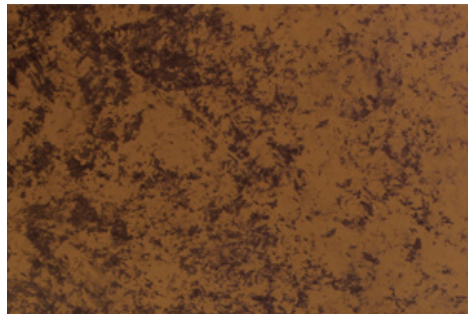
Silversmith (28)



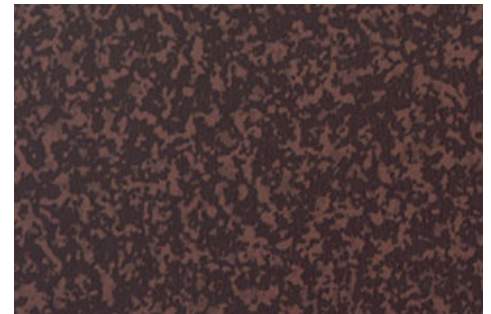
Brite Red (17)

OXIDE SERIES

Made to look like weathered steel with a rust-like appearance, these color choices add a timeless appearance with a 70% PVDF finish to your project.



Copper Brown (42)



Tarnished Red (47)



WOODLAND SERIES

Add the warmth of wood with the durability of metal to your next project. ATAS offers five classic woodgrain patterns with a 70% PVDF coating. The Woodland Series is available in .032 aluminum.



Birch (57)



Cedar (54)



Driftwood (53)



Walnut (55)



Bamboo (61)

NATURAL METALS

Natural metals will weather and patina naturally over time, adding character and aesthetic appeal to any building design. In addition to natural metals, ATAS offers 55% Al-Zn alloy coated steel with acrylic coating and anodized aluminum as standard available materials.



Grey Zinc (50)*



Dark Zinc (51)*



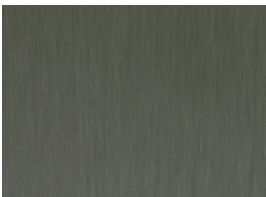
Brown Zinc (89)*



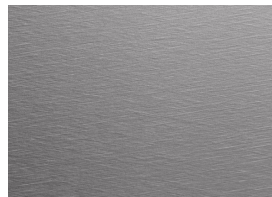
Blue Zinc (94)*



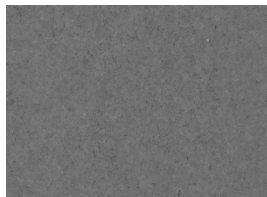
Red Zinc (95)*



Green Zinc (96)*



Classic Stainless Steel (40)*



Tin Matte Stainless Steel (41)*



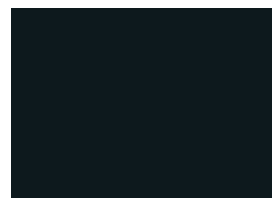
55% Al-Zn Alloy Coated Steel with Acrylic Coating (97)



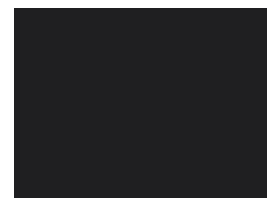
Copper (49)*



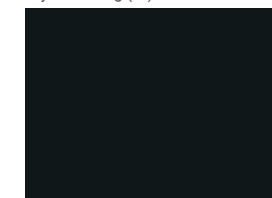
Clear Satin Anodized (70)



Dark Bronze Anodized (71)



BlackMatt Anodized (67)*



LA Extra Dark Bronze Anodized (66)*

*Special material. Pricing and availability dependent upon project specifics. Color chips available upon request.

www.atas.com
800.468.1441

ATAS International, Inc.
Allentown, PA | Mesa, AZ | University Park, IL



Stainless steel products provided by ROOFINOX®. Colors are as close to the actual colors as modern printing allows. Exact metal color chips available upon request (this is a requirement for all premium colors), and should be used for final color selection. If you have requirements or preference for colors or finishes other than shown, contact ATAS. Color availability varies by material, gauge and profile. ATAS is not responsible for colors selected from color chart. ATAS reserves the right to modify, eliminate and/or change its products without prior notification. All colors are produced under stringent guidelines and tolerances that are identified within the coated metal industry. Batch to batch variations may occur within these established industry tolerances. Care should be exercised by customer when mixing lots. Contact ATAS for more information. Please visit www.atas.com for the most up-to-date information. © 2024 ATAS International, Inc. LRD1024 LAT400