

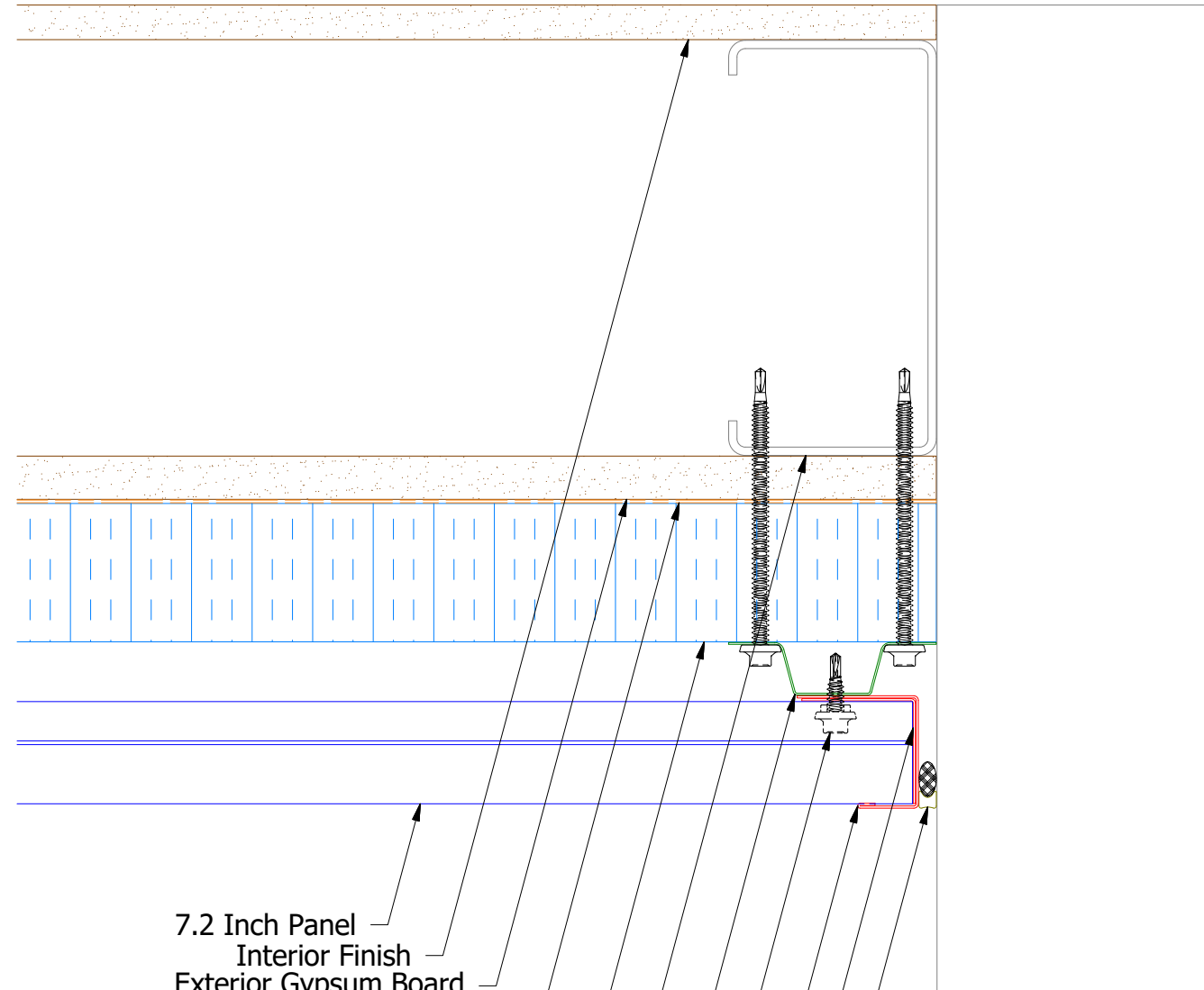
**ATAS INTERNATIONAL, INC**  
 Allentown PA  
 610-395-8445  
 Mesa AZ  
 480-558-7210

TITLE  
**Belvedere 7.2 inch Rib Panel Detail**

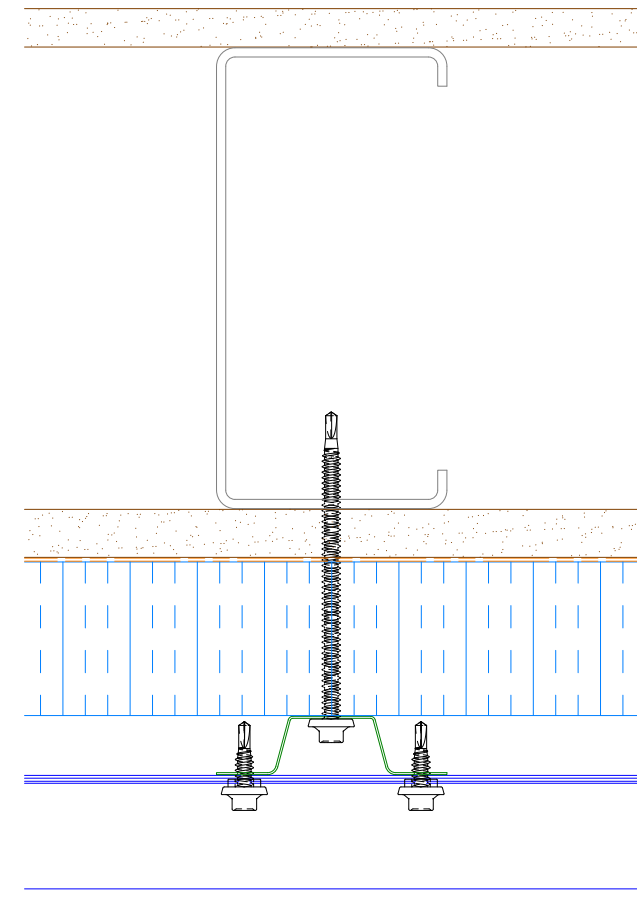
REV. NO.	DATE	DESCRIPTION OF REVISION	BY	APP	DWG. NO.	DR	DATE
						DMR	11/16/2016
					MATERIAL	APP	DATE
					SH. SIZE	B	SCALE X:X



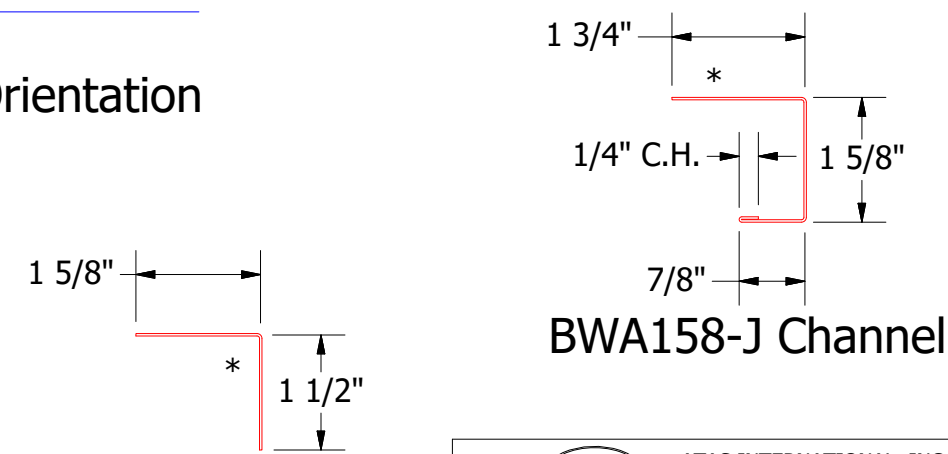
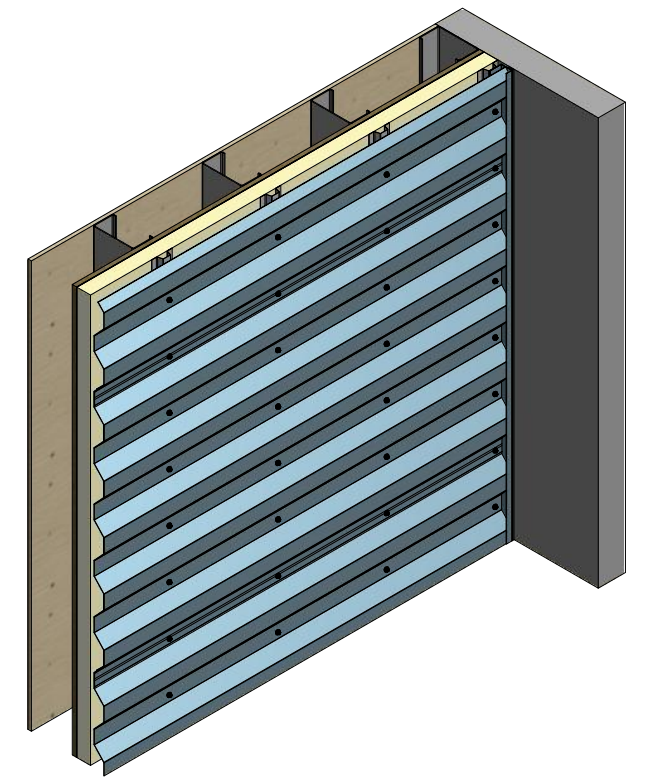
# Horizontal Panel



- 7.2 Inch Panel
- Interior Finish
- Exterior Gypsum Board
- Water and Air Resistive Barrier
- Water Resistant Insulation
- Metal Wall Stud
- Vertical Subgirt
- #14 x 7/8" Painted Hex Washer Head Fastener with Washer
- J Channel
- Angle Trim
- Backer Rod and Sealant



Alternative Subgirt Orientation



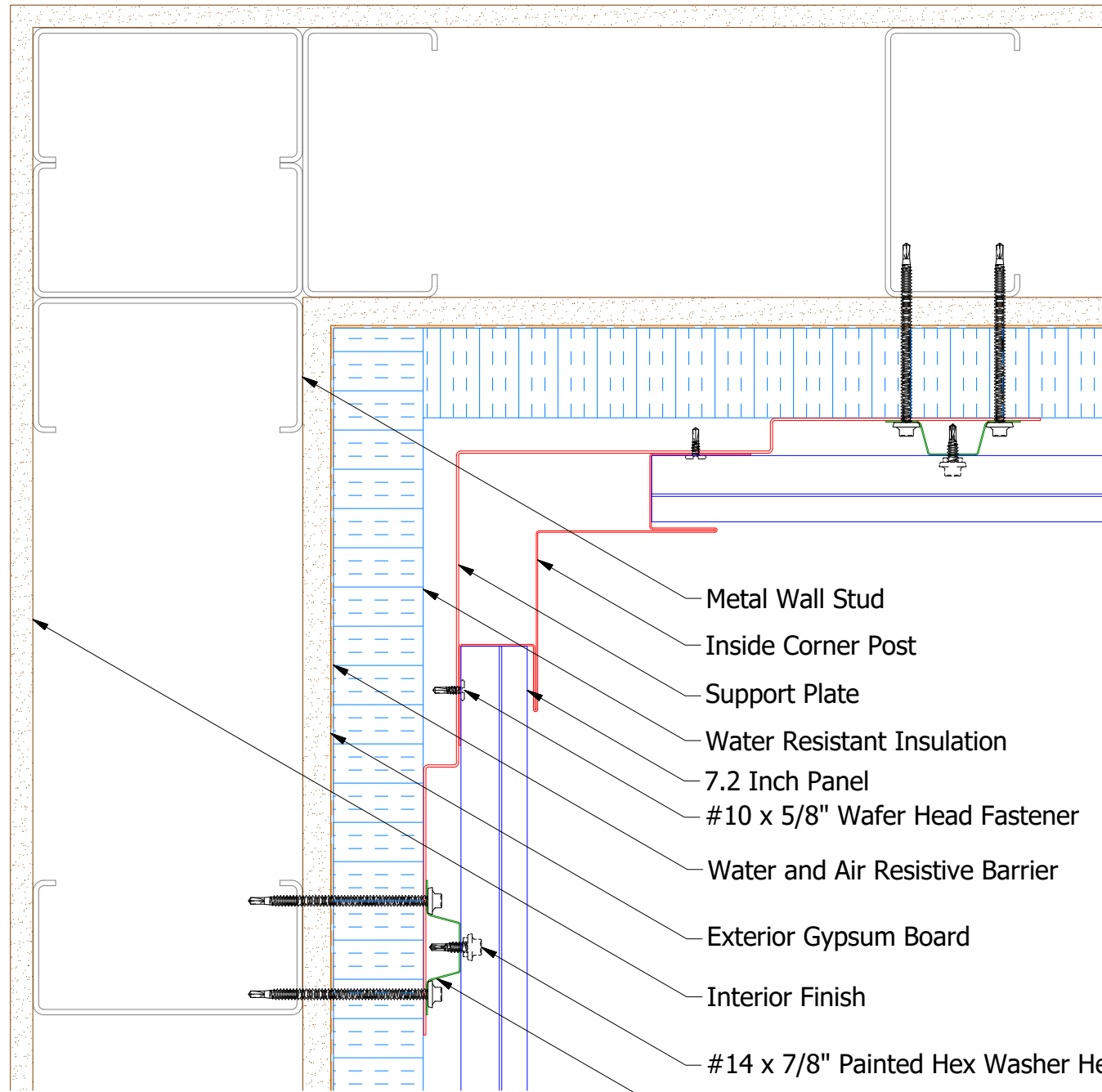
BWA680-Angle Trim

BWA158-J Channel

**ATAS** ATAS INTERNATIONAL, INC  
 Allentown PA  
 610-395-8445  
 Mesa AZ  
 480-558-7210

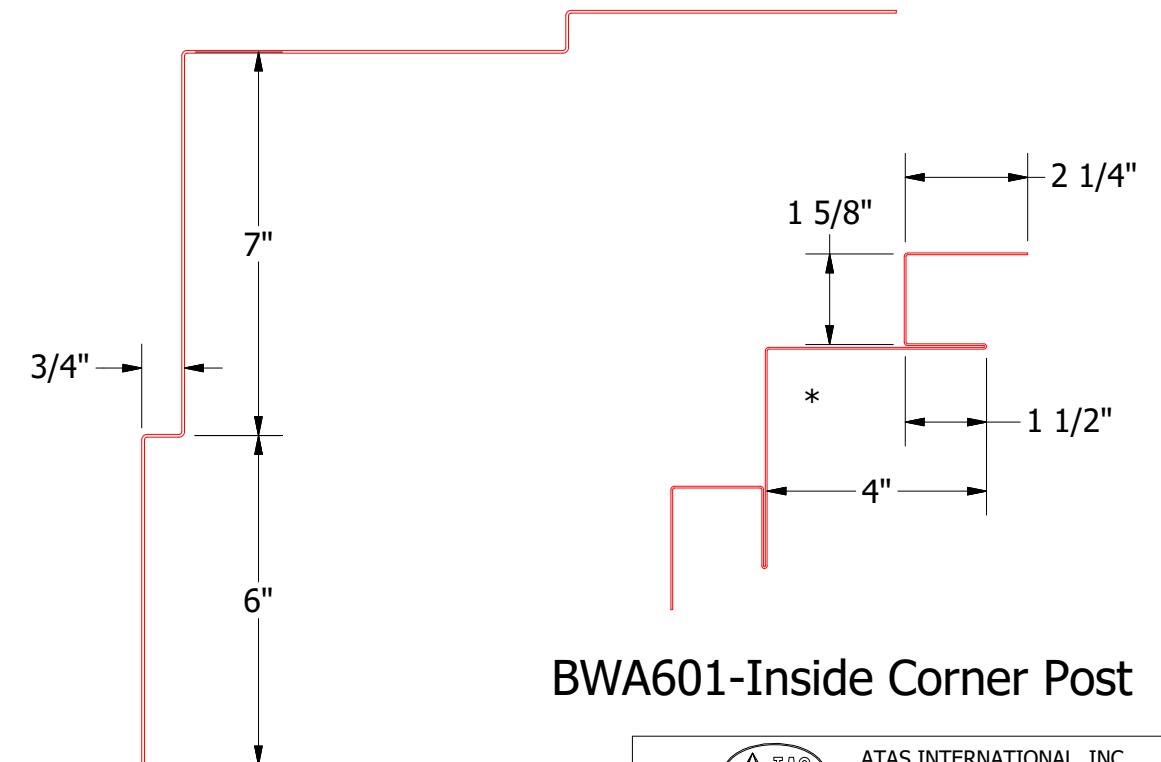
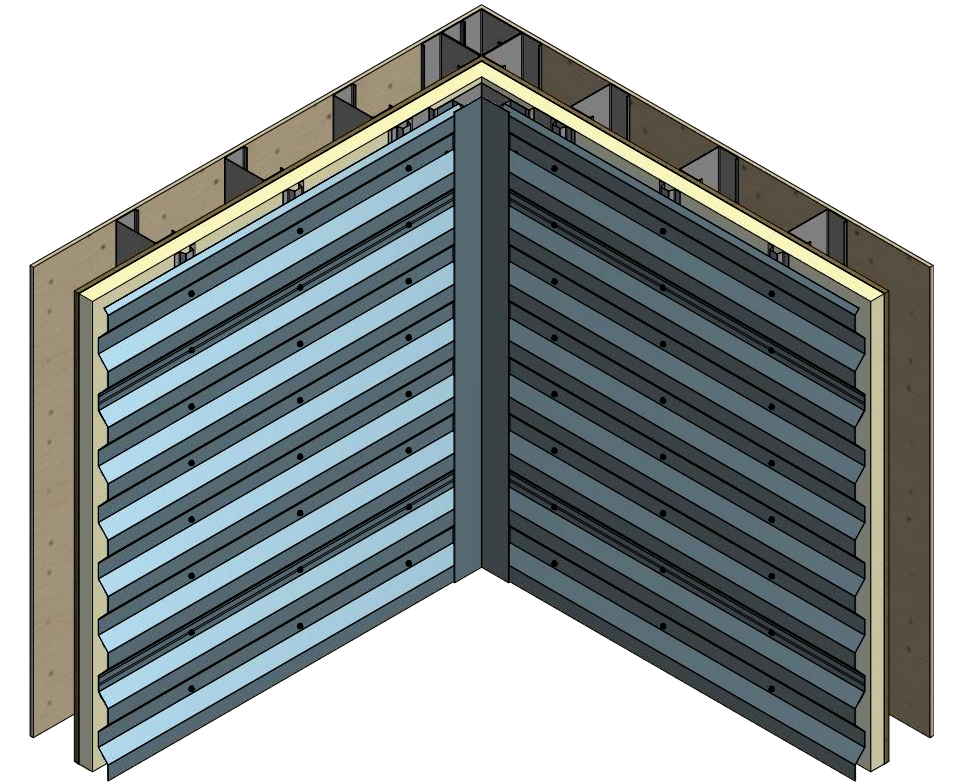
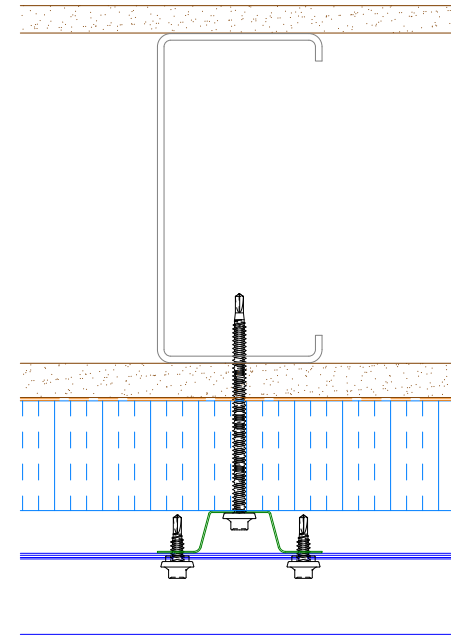
				TITLE 7.2" Rib Open Endwall Detail			
REV. NO.		DATE		DESCRIPTION OF REVISION		BY APP	
1	4/16/2026	Corrected Trim SKUs from BWR to BWA		M.L.P	D.S.		
DWG. NO.		DR		DATE		DATE	
		DMR		8/11/2016			
MATERIAL		SH. SIZE		SCALE		X:X	
		B					

# Horizontal Panel



- Metal Wall Stud
- Inside Corner Post
- Support Plate
- Water Resistant Insulation
- 7.2 Inch Panel
- #10 x 5/8" Wafer Head Fastener
- Water and Air Resistive Barrier
- Exterior Gypsum Board
- Interior Finish
- #14 x 7/8" Painted Hex Washer Head Fastener with Washer
- Vertical Subgirt


## Alternative Subgirt Orientation



Support Plate

BWA601-Inside Corner Post

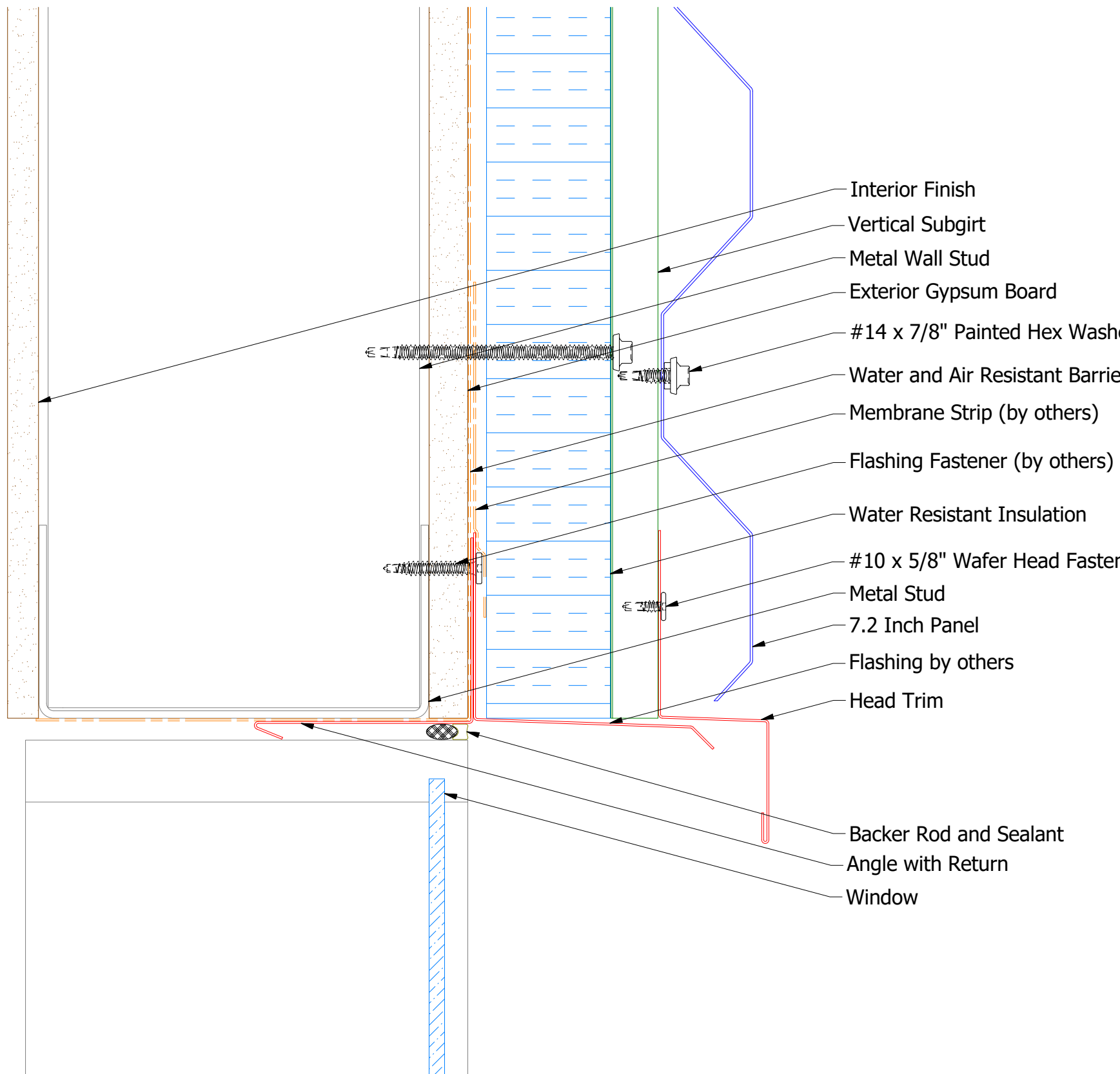
**NOTE:** Optional 18 GA. Plate for Outside Corner Post is Available

REV. NO.		DATE	DESCRIPTION OF REVISION	BY	APP	 <b>ATAS INTERNATIONAL, INC</b> Allentown PA 610-395-8445 Mesa AZ 480-558-7210	
TITLE <b>7.2" Rib Open Inside Corner Detail</b>						DR	DATE
						DMR	8/12/2016
						APP	DATE
						SH. SIZE	B
						SCALE	X:X

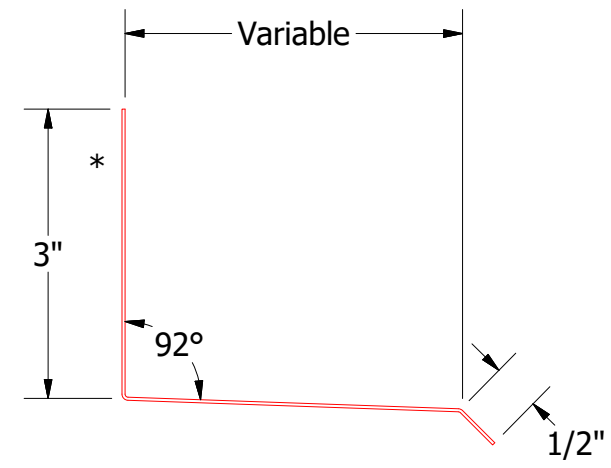




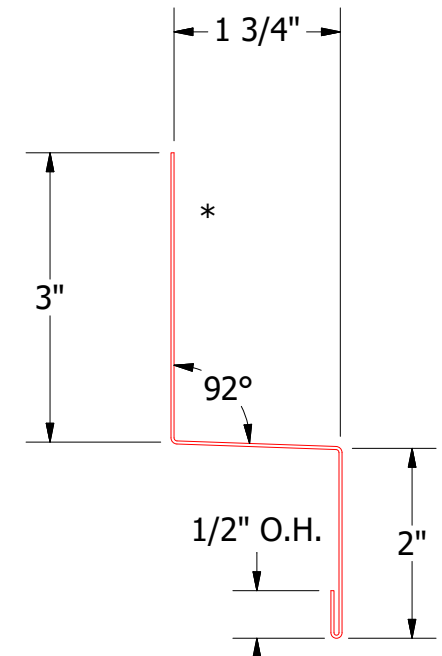
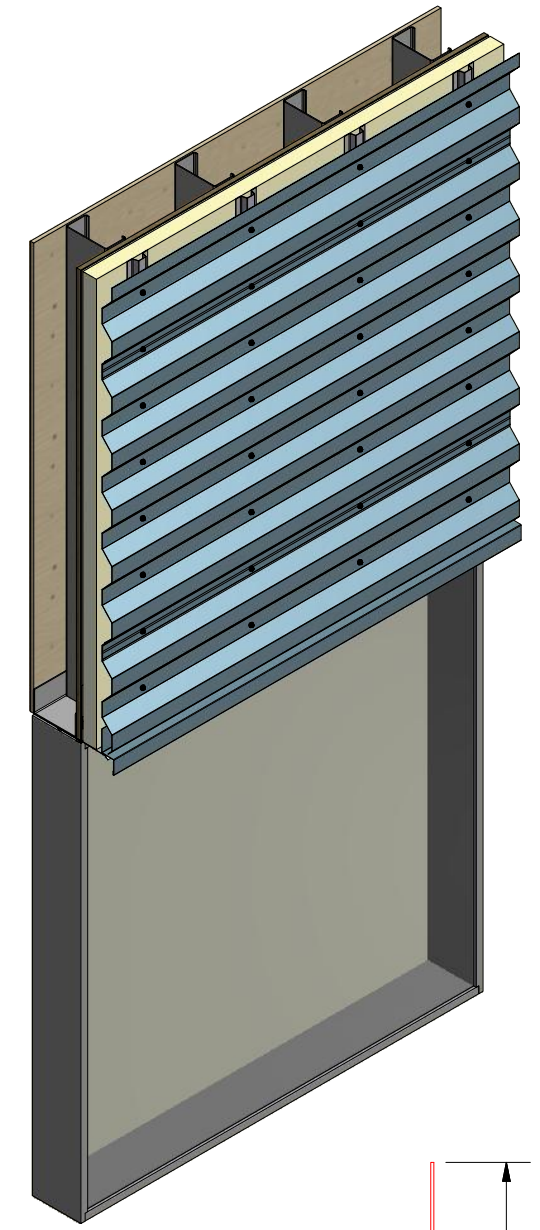
# Horizontal Panel



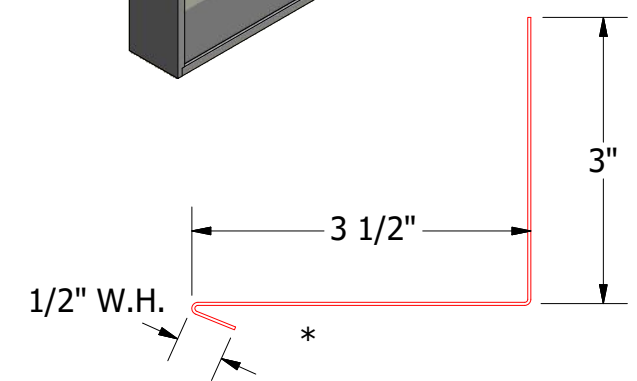
- Interior Finish
- Vertical Subgirt
- Metal Wall Stud
- Exterior Gypsum Board
- #14 x 7/8" Painted Hex Washer Head Fastener with Washer
- Water and Air Resistant Barrier
- Membrane Strip (by others)
- Flashing Fastener (by others)
- Water Resistant Insulation
- #10 x 5/8" Wafer Head Fastener
- Metal Stud
- 7.2 Inch Panel
- Flashing by others
- Head Trim
- Backer Rod and Sealant
- Angle with Return
- Window



**Flashing**  
(Field Fabricated from Color Matched Flat Stock)



**BWA550-Head Trim**



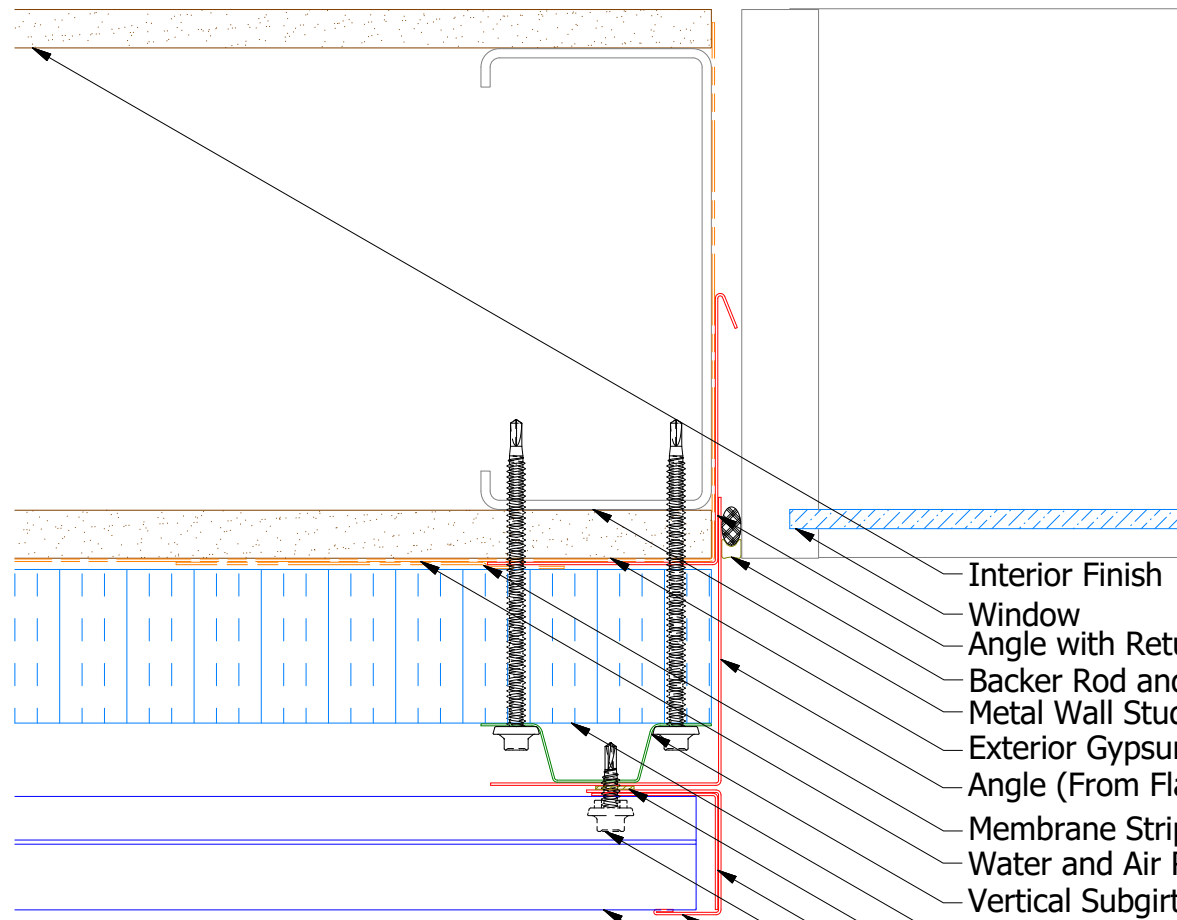
**BWA683-Angle Trim with Return**  
(Field Fabricated from Color Matched Flat Stock)

**ATAS** INTERNATIONAL, INC  
Allentown PA  
610-395-8445  
Mesa AZ  
480-558-7210

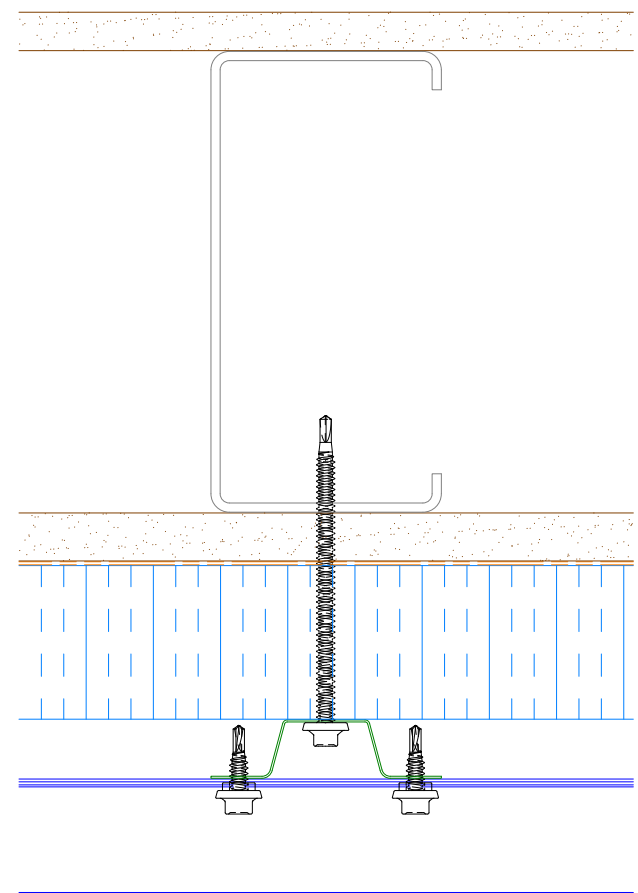
TITLE **7.2" Rib Open Head Detail**

REV. NO.	DATE	DESCRIPTION OF REVISION	BY	APP	DWG. NO.	DR	DATE
						DMR	8/26/2016
					MATERIAL	APP	DATE
					SH. SIZE	B	SCALE
							X:X

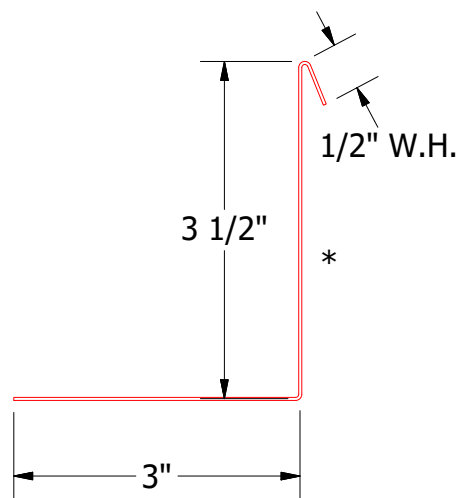
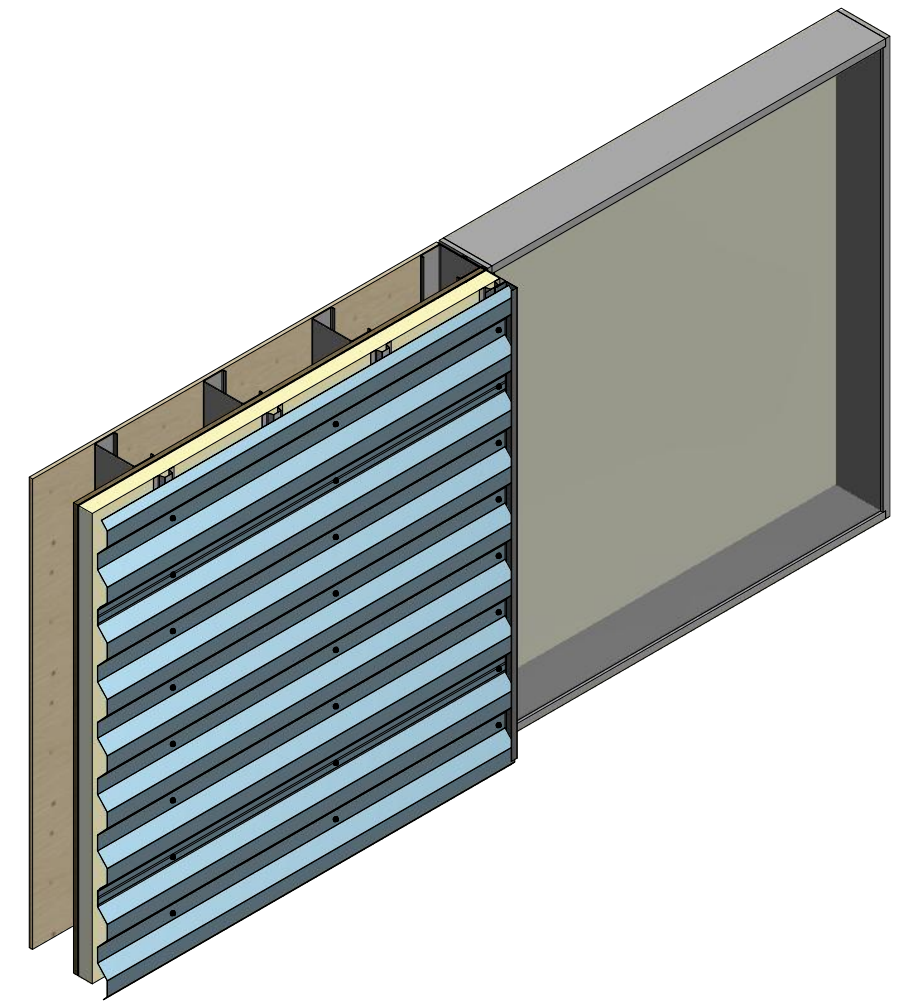
# Horizontal Panel



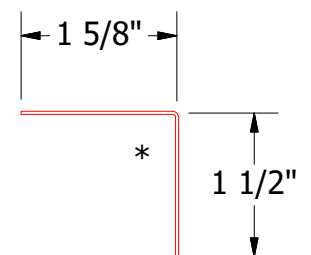
- Interior Finish
- Window
- Angle with Return
- Backer Rod and Sealant
- Metal Wall Stud
- Exterior Gypsum Board
- Angle (From Flatstock)
- Membrane Strip over J Channel and Angle Trim
- Water and Air Resistive Barrier
- Vertical Subgirt
- Water Resistant Insulation
- Butyl Tape
- Angle Trim
- #14 x 7/8" Painted Hex Washer Head Fastener with Washer
- J Channel
- 7.2" Rib Panel



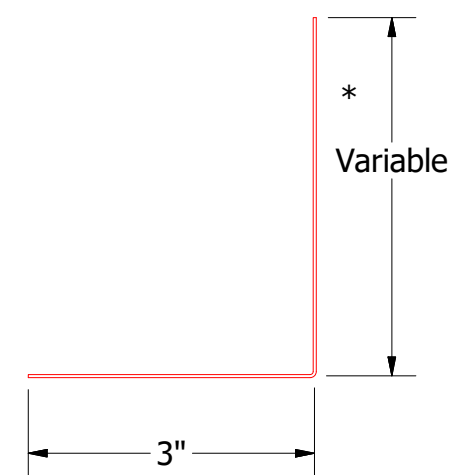
Alternative Subgirt Orientation



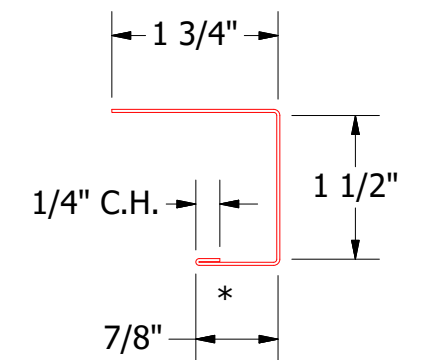
BWA683-Angle with Return



BWA680-Angle Trim



Angle



BWA158-J Channel

Note: \* denotes color side.

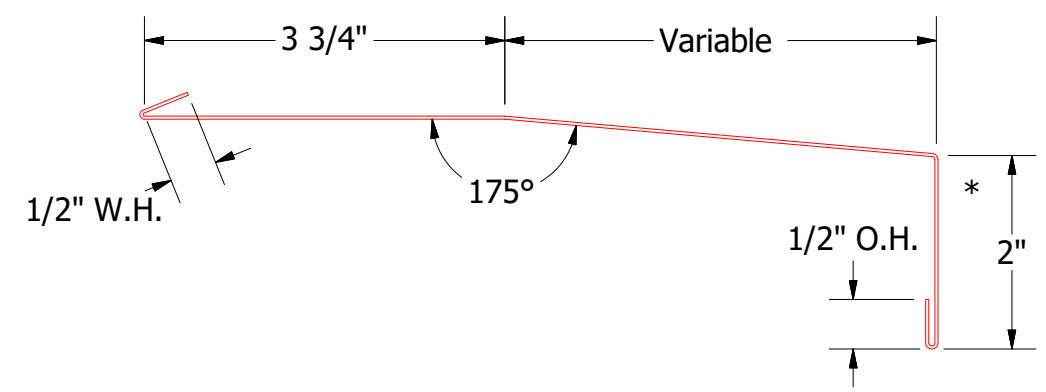
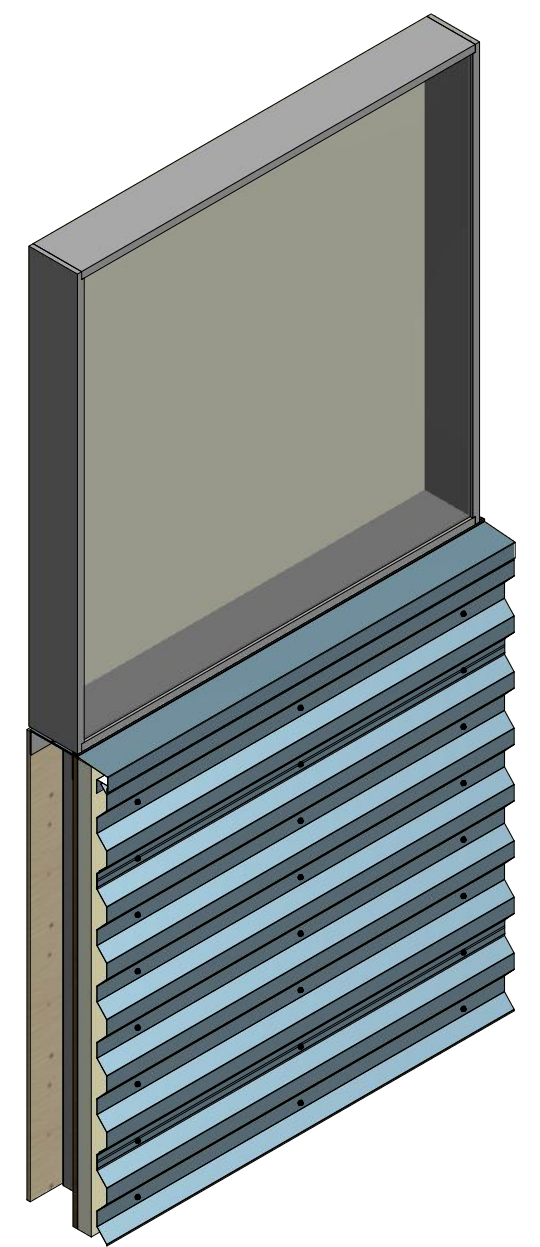
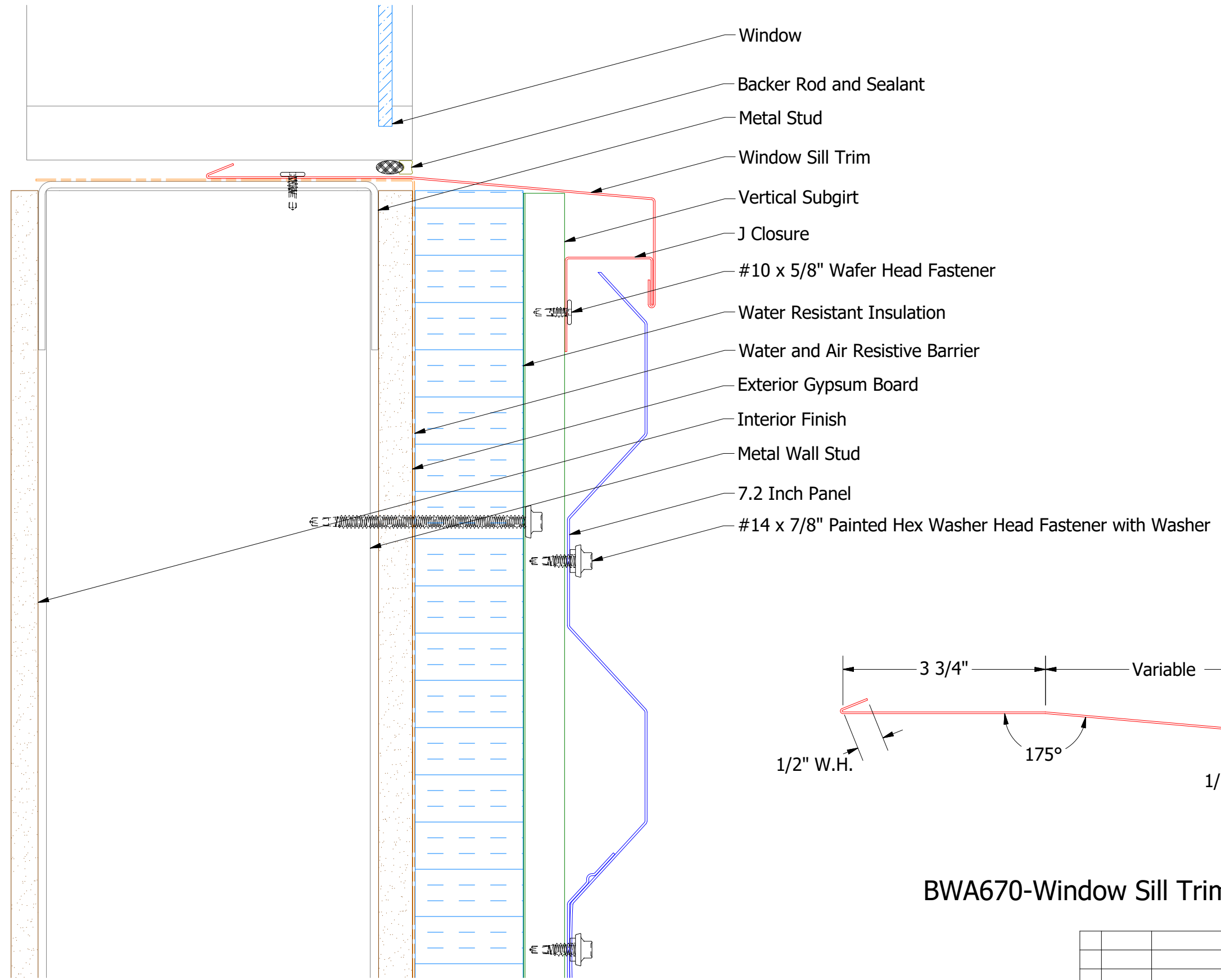
REV. NO.	DATE	DESCRIPTION OF REVISION	BY	APP

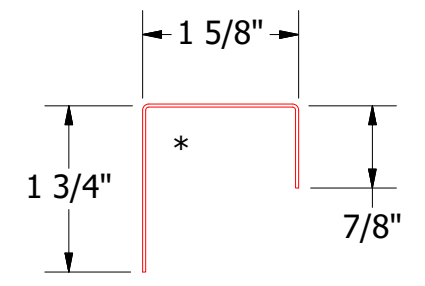
TITLE		7.2" Rib Open Jamb Detail	
DWG. NO.	DR	DMR	DATE
			8/15/2016
MATERIAL	APP		DATE
SH. SIZE	B	SCALE	X:X

**ATAS INTERNATIONAL, INC**  
 Allentown PA  
 610-395-8445  
 Mesa AZ  
 480-558-7210

# Horizontal Panel



BWA670-Window Sill Trim



BWA270-J Closure

**ATAS** ATAS INTERNATIONAL, INC  
 Allentown PA  
 610-395-8445  
 Mesa AZ  
 480-558-7210

TITLE 7.2" Rib Open Window Sill Detail

REV. NO.	DATE	DESCRIPTION OF REVISION	BY	APP	DWG. NO.	DR	DATE
						DMR	8/29/2016
					MATERIAL	APP	DATE
					SH. SIZE	B	SCALE
							X:X