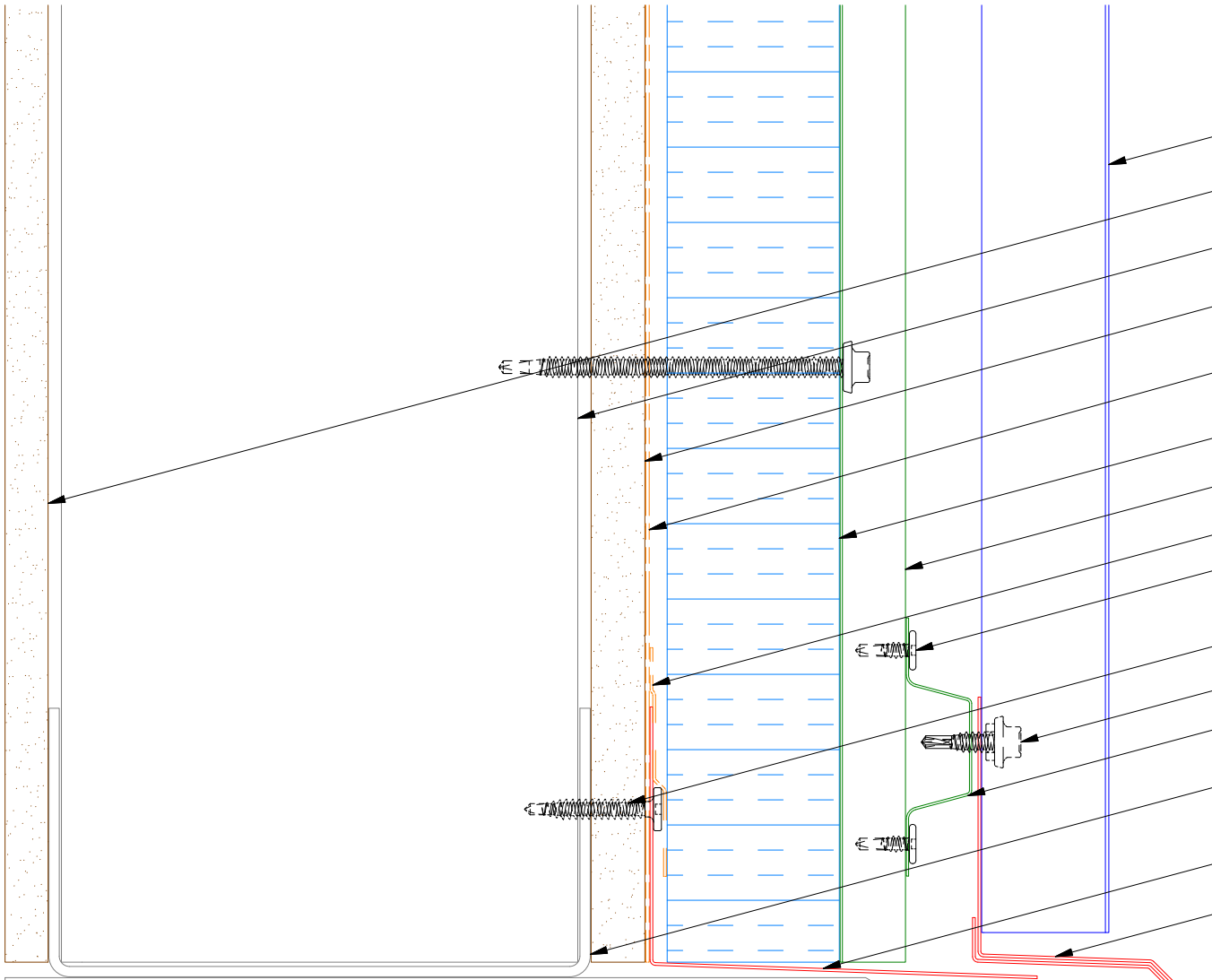


ATAS INTERNATIONAL, INC
 Allentown PA
 610-395-8445
 Mesa AZ
 480-558-7210

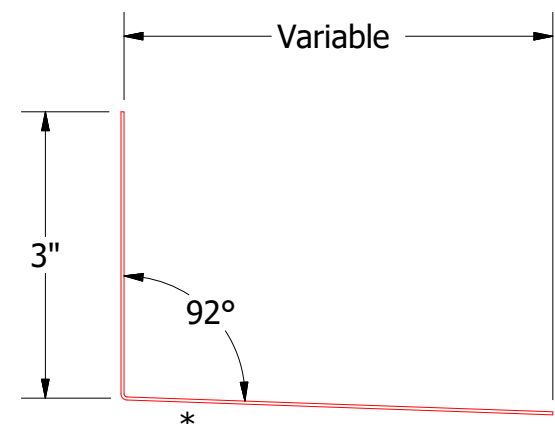
TITLE
Belvedere 7.2 inch Rib Panel Detail

REV. NO.	DATE	DESCRIPTION OF REVISION	BY	APP	DWG. NO.	DR	DATE
						DMR	11/16/2016
					MATERIAL	APP	DATE
					SH. SIZE	B	SCALE
							X:X

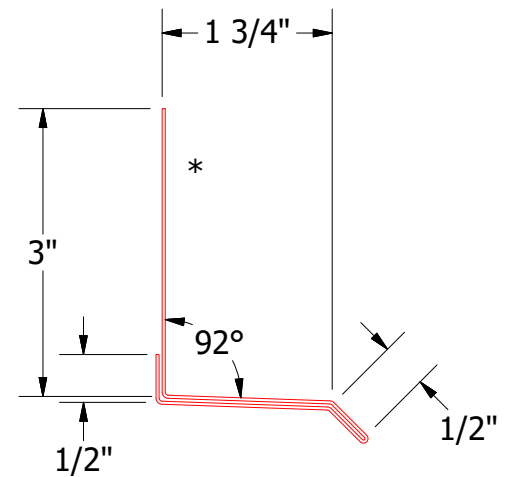
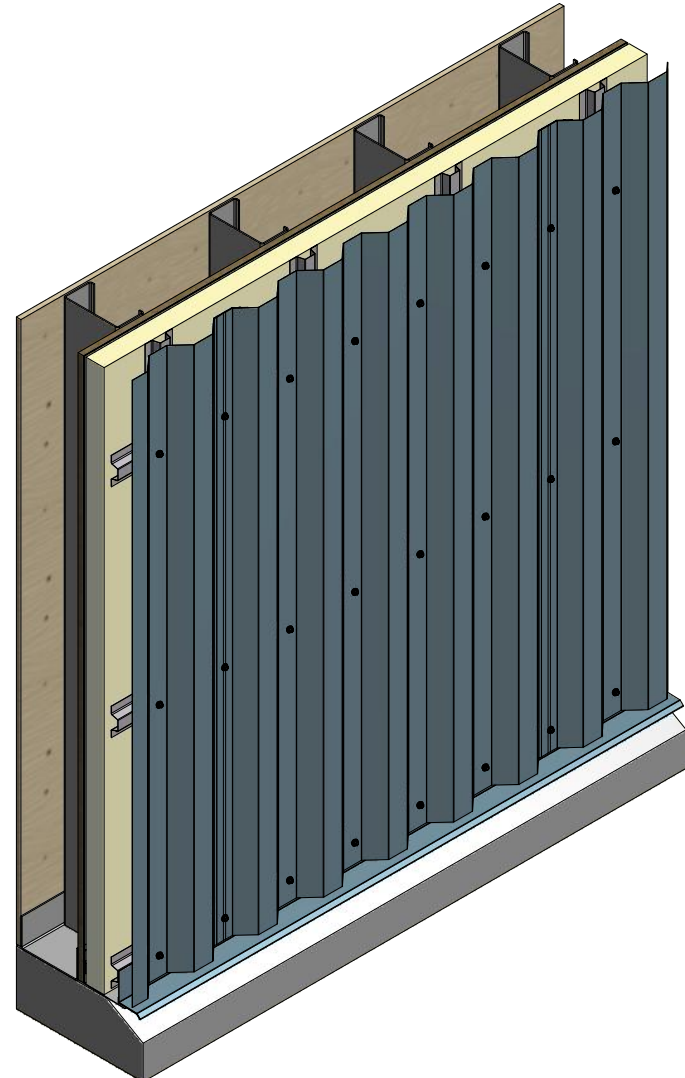
Vertical Panel



- 7.2 Inch Panel
- Interior Finish
- Metal Wall Stud
- Exterior Gypsum Board
- Water and Air Resistant Barrier
- Water Resistant Insulation
- Vertical Subgirt
- Membrane Strip (by others)
- #10 x 5/8" Wafer Head Fastener
- Fastener Flashing (by others)
- #14 x 7/8" Painted Hex Washer Head Fastener with Washer
- Horizontal Subgirt
- Metal Stud
- Flashing (by others)
- Base Trim



Flashing
(Field Fabricated from Color Matched Flat Stock)



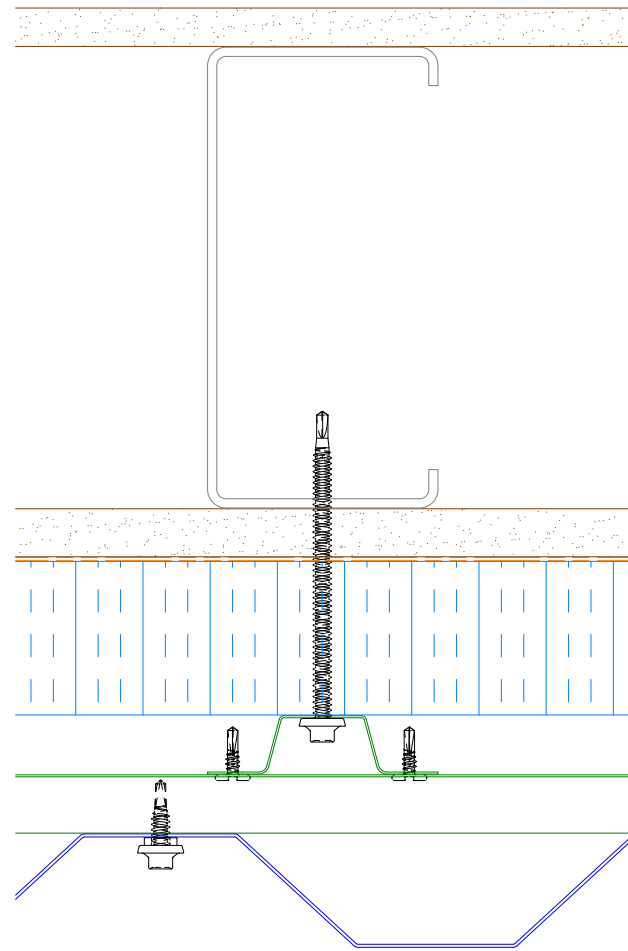
BWA661-Base Trim

ATAS ATAS INTERNATIONAL, INC
 Allentown PA
 610-395-8445
 Mesa AZ
 480-558-7210

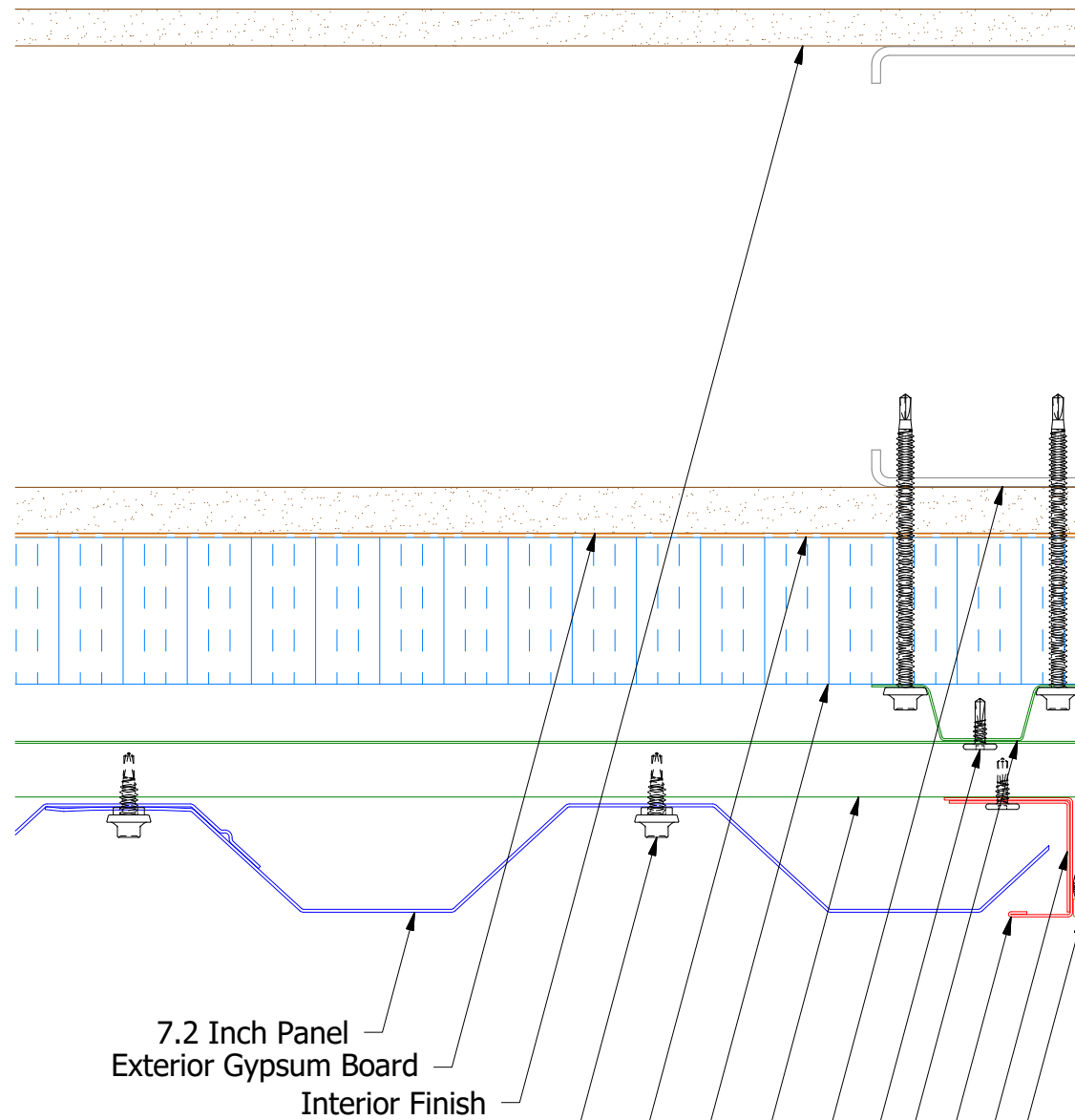
TITLE		7.2" Rib Open Base Detail	
DWG. NO.	DR	DATE	8/11/2016
	DMR		
	APP	DATE	
MATERIAL	SH. SIZE	SCALE	X:X
	B		

REV. NO.	DATE	DESCRIPTION OF REVISION	BY	APP

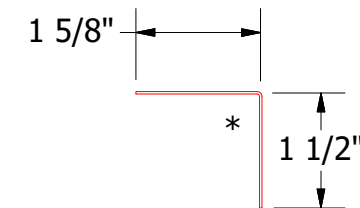
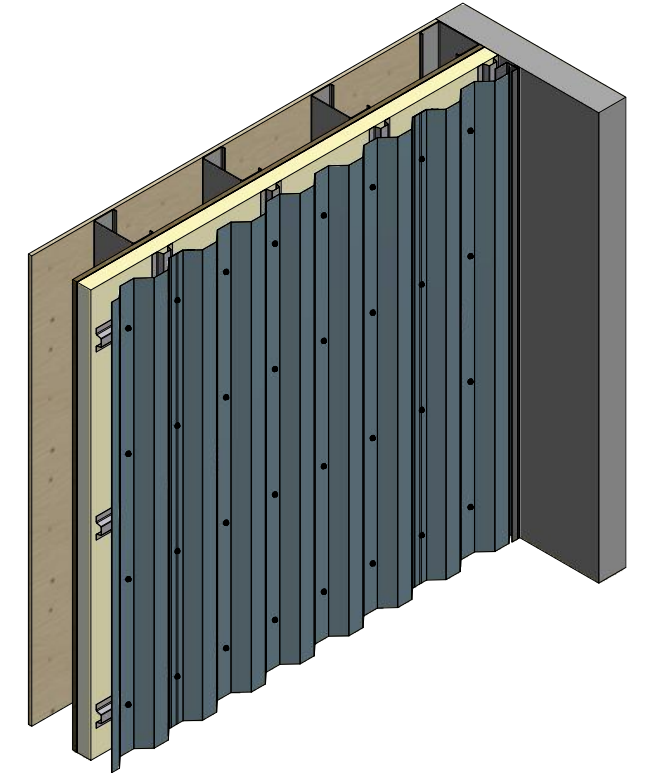
Vertical Panel



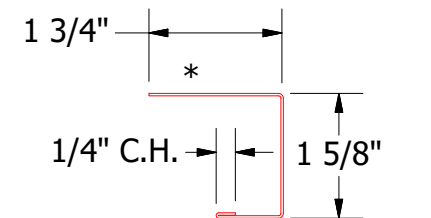
Alternate Subgirt Orientation



- 7.2 Inch Panel
- Exterior Gypsum Board
- Interior Finish
- #14 x 7/8" Painted Hex Washer Head Fastener with Washer
- Water and Air Resistive Barrier
- Water Resistant Insulation
- Horizontal Subgirt
- Metal Wall Stud
- #10 x 5/8" Wafer Head Fastener
- Vertical Subgirt
- J Channel
- Angle Trim
- Backer Rod and Sealant



BWA680-Angle Trim



BWA158-J Channel

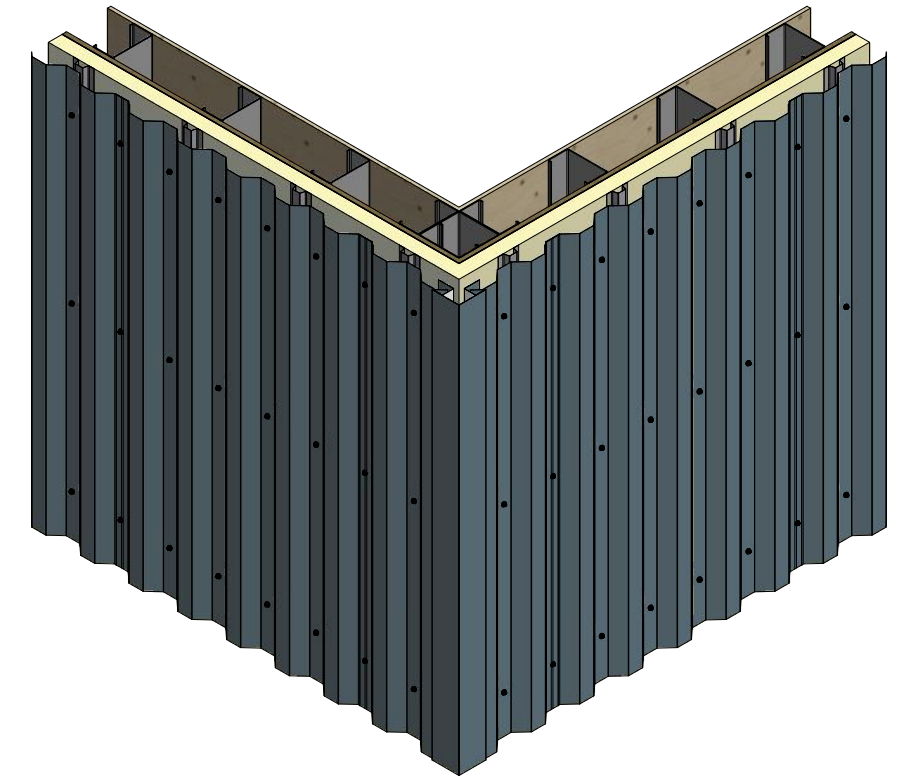


TITLE 7.2" Rib Open Endwall Detail

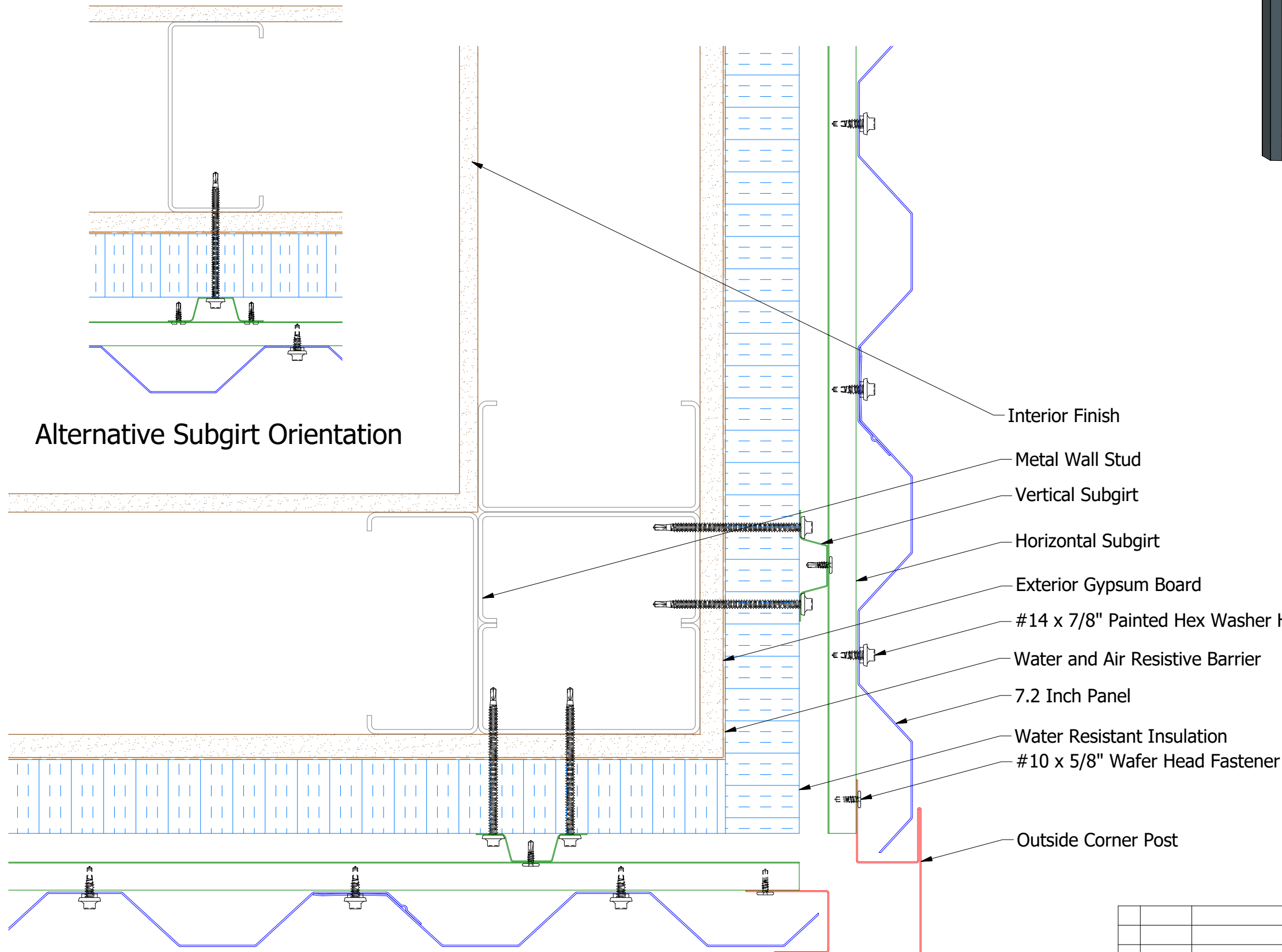
REV. NO.	DATE	DESCRIPTION OF REVISION	BY	APP	MATERIAL	SH. SIZE	SCALE
1	4/16/2026	Corrected Trim SKUs from BWR to BWA	M.L.P	D.S.		B	X:X

DWG. NO.	DR	DATE
	DMR	8/11/2016
APP	D.S.	DATE

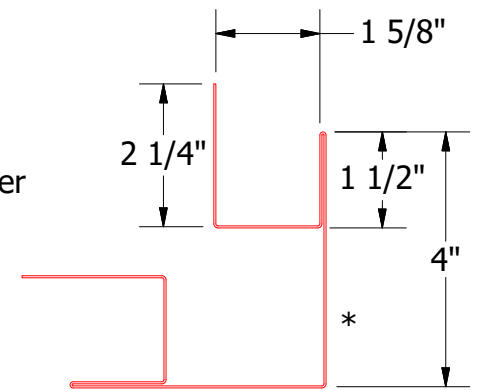
Vertical Panel



Alternative Subgirt Orientation



- Interior Finish
- Metal Wall Stud
- Vertical Subgirt
- Horizontal Subgirt
- Exterior Gypsum Board
- #14 x 7/8" Painted Hex Washer Head Fastener with Washer
- Water and Air Resistive Barrier
- 7.2 Inch Panel
- Water Resistant Insulation
- #10 x 5/8" Wafer Head Fastener
- Outside Corner Post



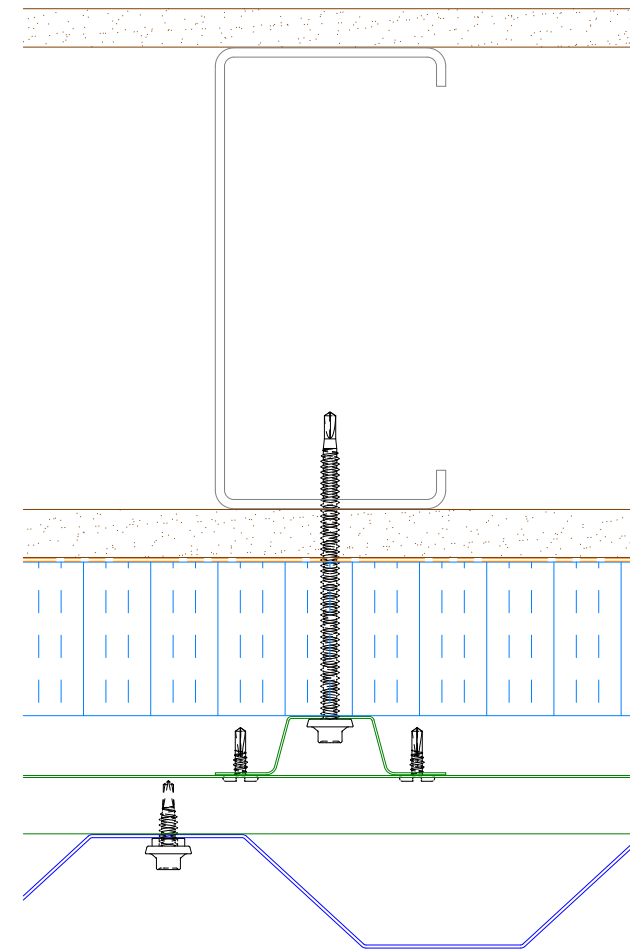
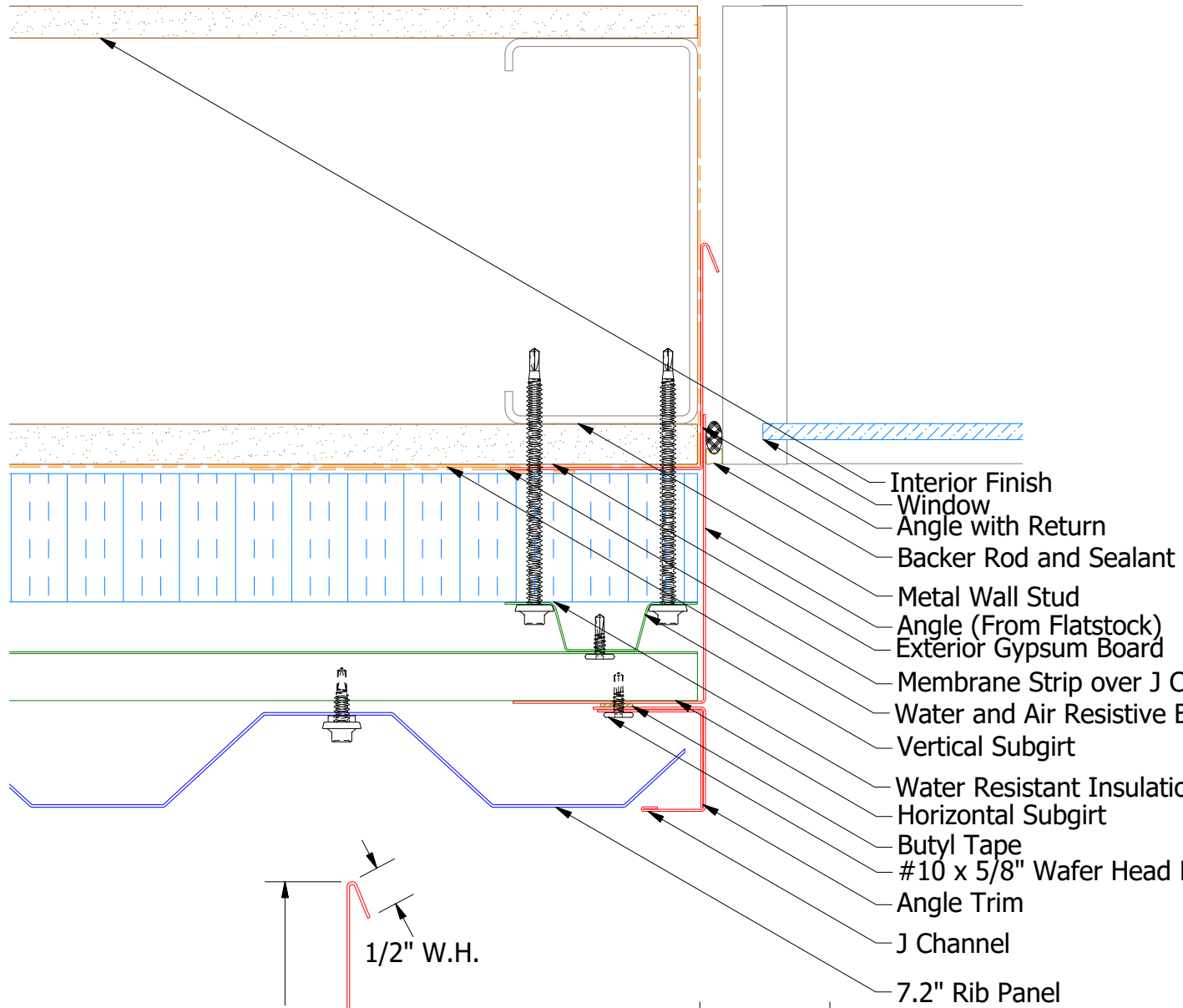
BWA602-Outside Corner Post


ATAS INTERNATIONAL, INC
 Allentown PA
 610-395-8445
 Mesa AZ
 480-558-7210

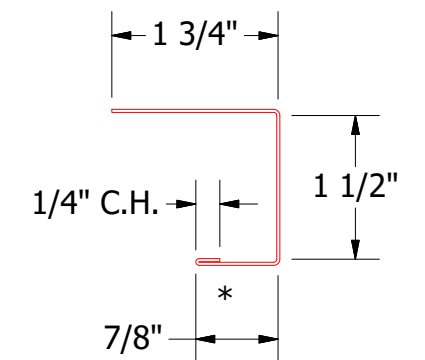
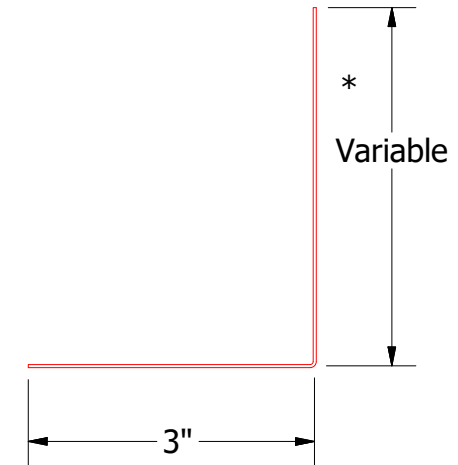
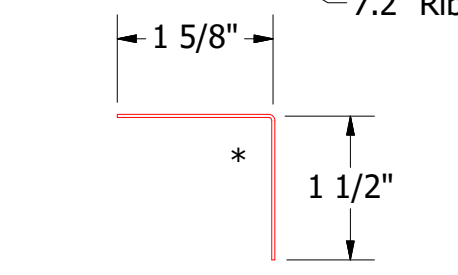
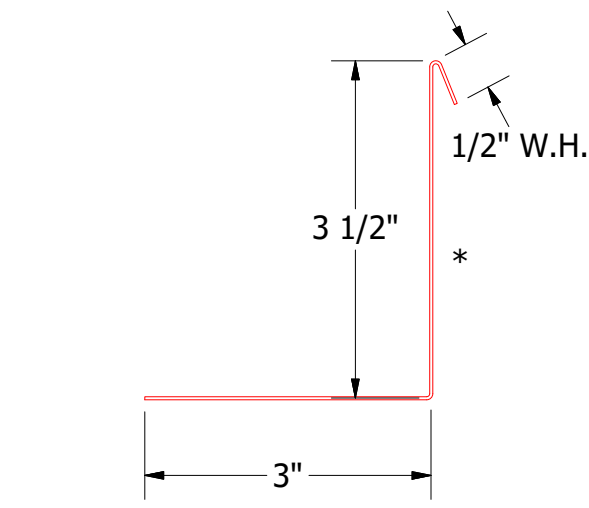
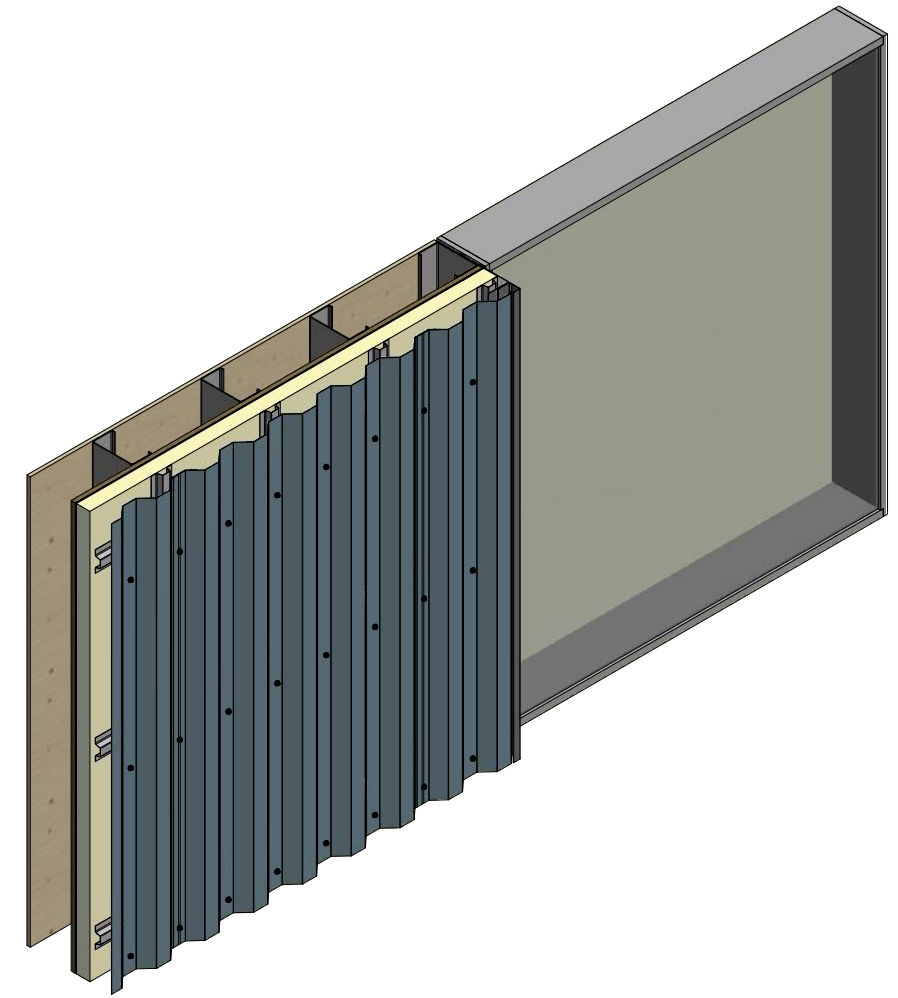
TITLE **7.2" Rib Outside Corner Detail**

REV. NO.	DATE	DESCRIPTION OF REVISION	BY	APP	DWG. NO.	DR	DATE	DR	DATE
						DMR	8/15/2016		
						APP	DATE		
						SH. SIZE	B	SCALE	X:X

Vertical Panel



Alternate Subgirt Orientation



BWA683-Angle with Return

BWA680-Angle Trim

Angle

BWA158-J Channel

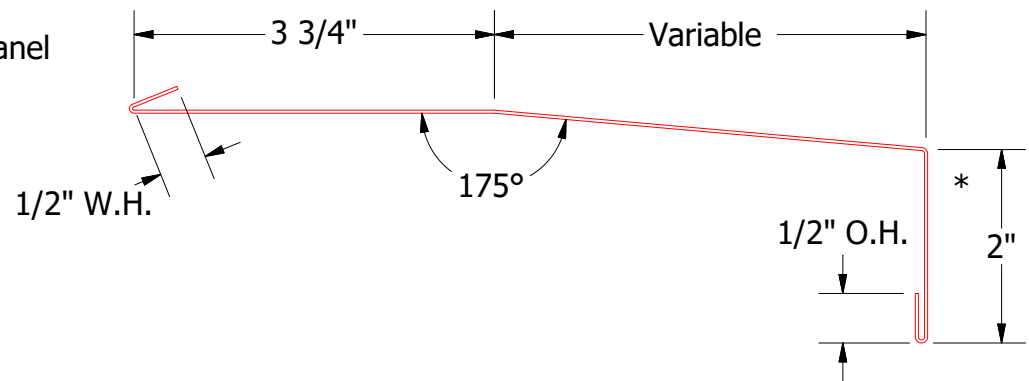
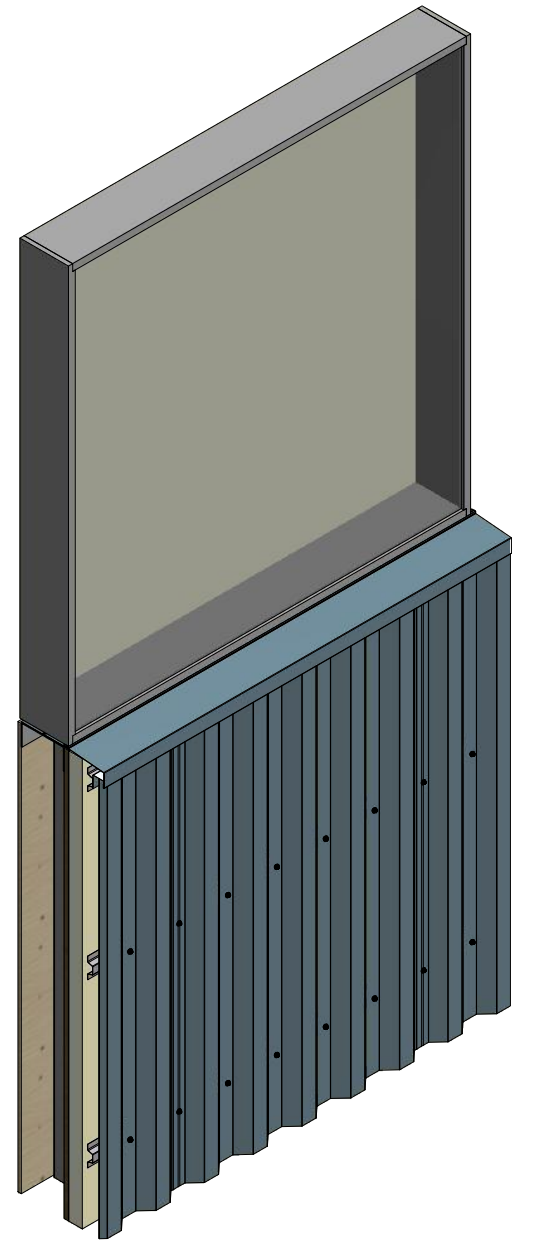
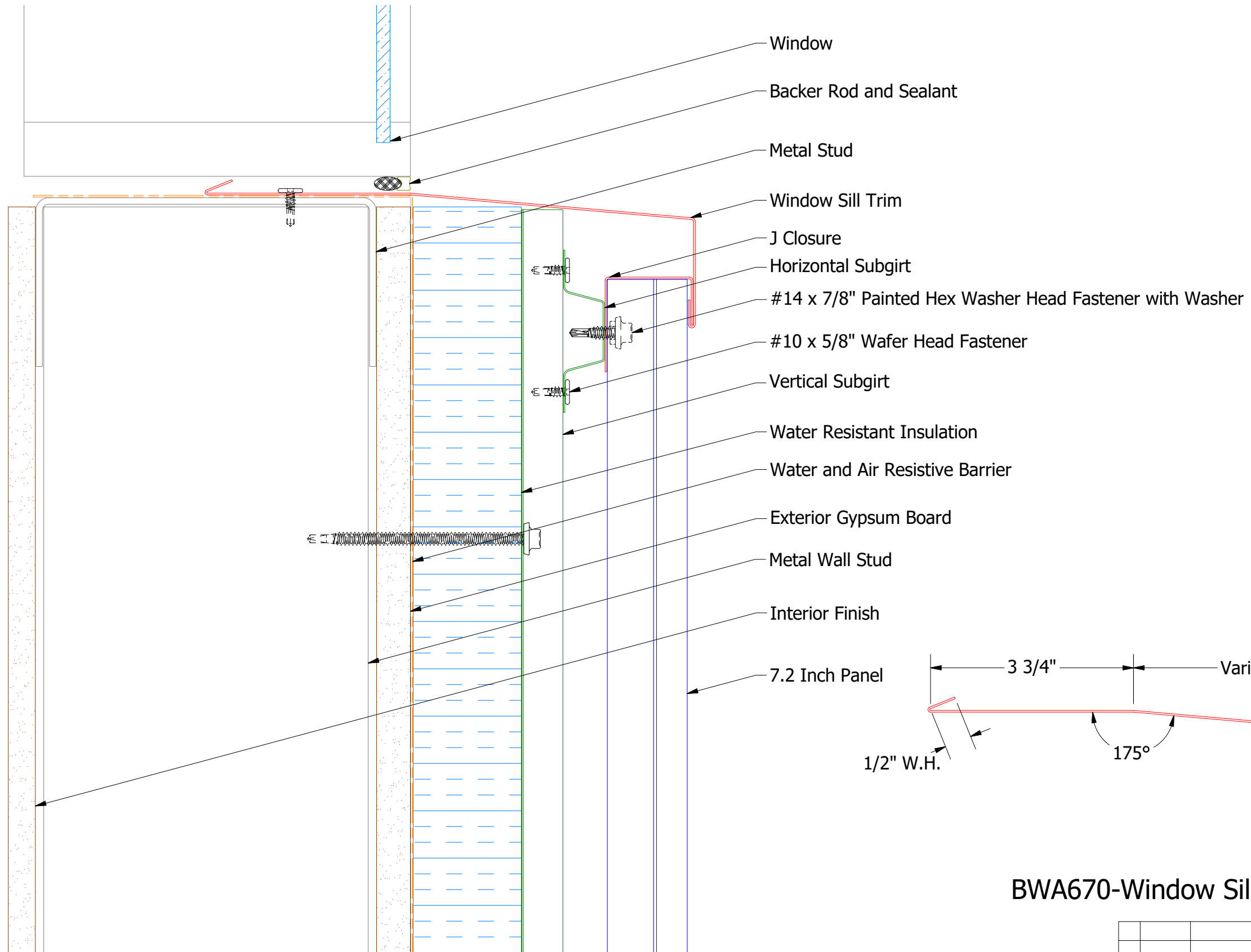
Note: * denotes color side.

REV. NO.	DATE	DESCRIPTION OF REVISION	BY	APP

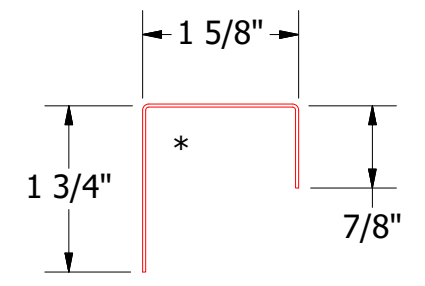
TITLE		7.2" Rib Open Jamb Detail		
DWG. NO.	DR	DMR	DATE	8/15/2016
MATERIAL	APP		DATE	
SH. SIZE	B	SCALE	X:X	

ATAS ATAS INTERNATIONAL, INC
 Allentown PA
 610-395-8445
 Mesa AZ
 480-558-7210

Vertical Panel



BWA670-Window Sill Trim



BWA270-J Closure


ATAS INTERNATIONAL, INC
 Allentown PA
 610-395-8445
 Mesa AZ
 480-558-7210

TITLE **7.2" Rib Open Window Sill Detail**

REV. NO.	DATE	DESCRIPTION OF REVISION	BY	APP	DWG. NO.	DR	DATE
						DMR	8/29/2016
					MATERIAL	APP	DATE
					SH. SIZE	B	SCALE
							X:X