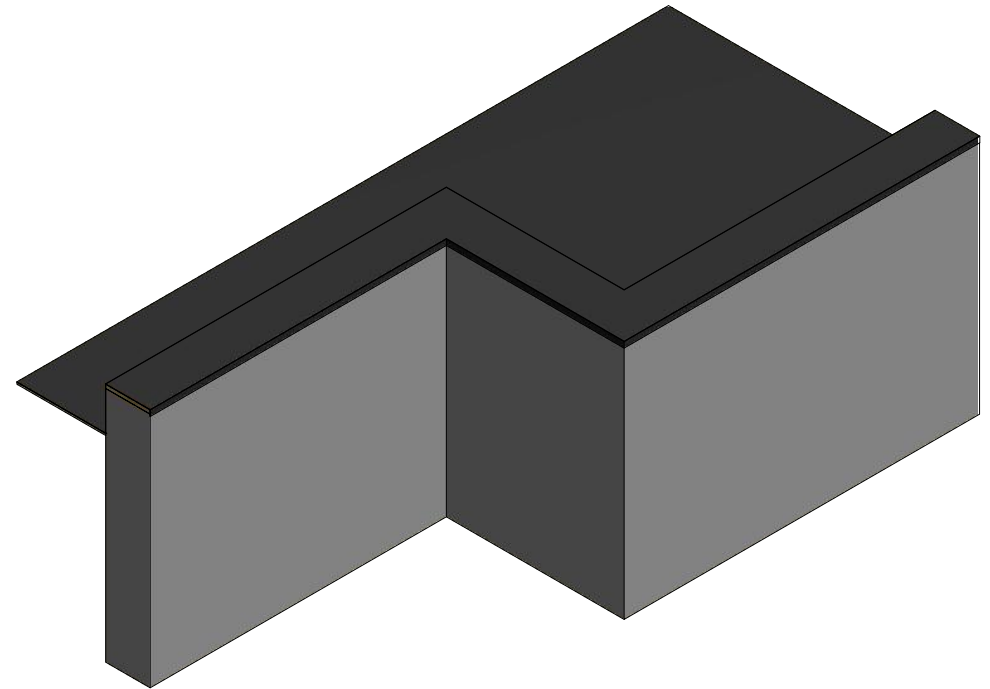
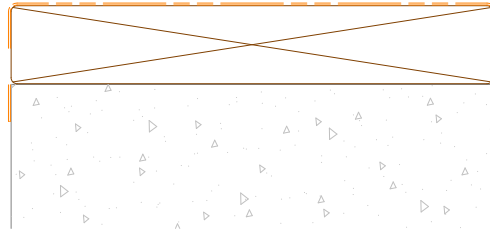
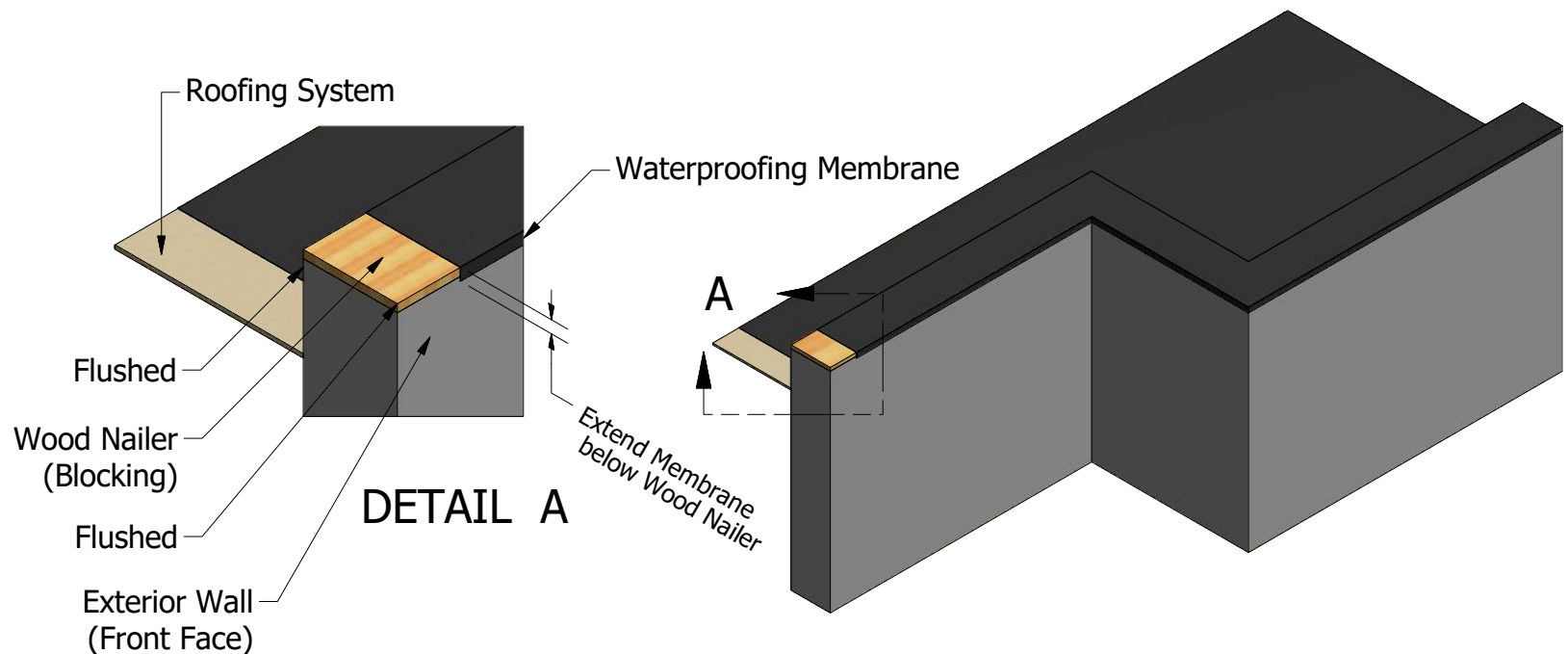


**Step 1.1** Check to make sure wood nailer (blocking) and waterproofing membrane are installed correctly.

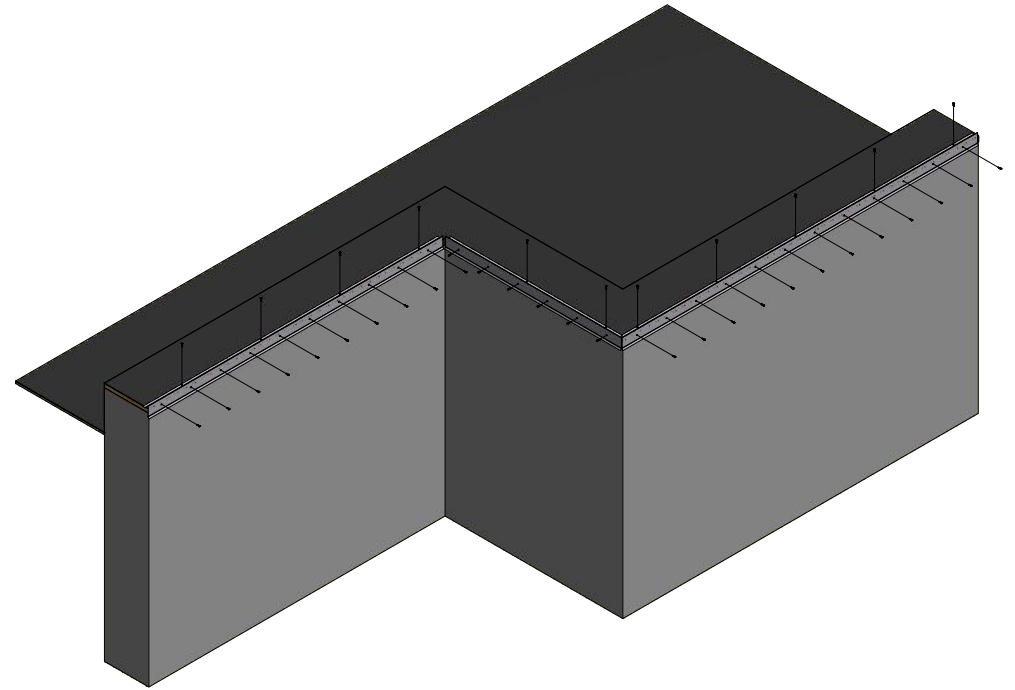
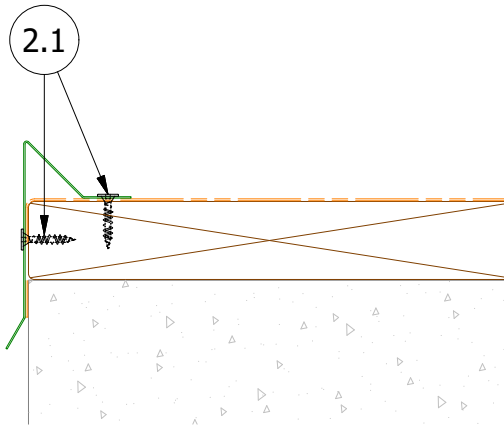


**Note:** Wood Nailer should be installed flush with the face of the Wall below at front and back. Waterproofing Membrane should extend below the wood nailer (blocking) at the Face.



**Step 2.1** Install Front Cleat with provided screws through the pre-punched slots.

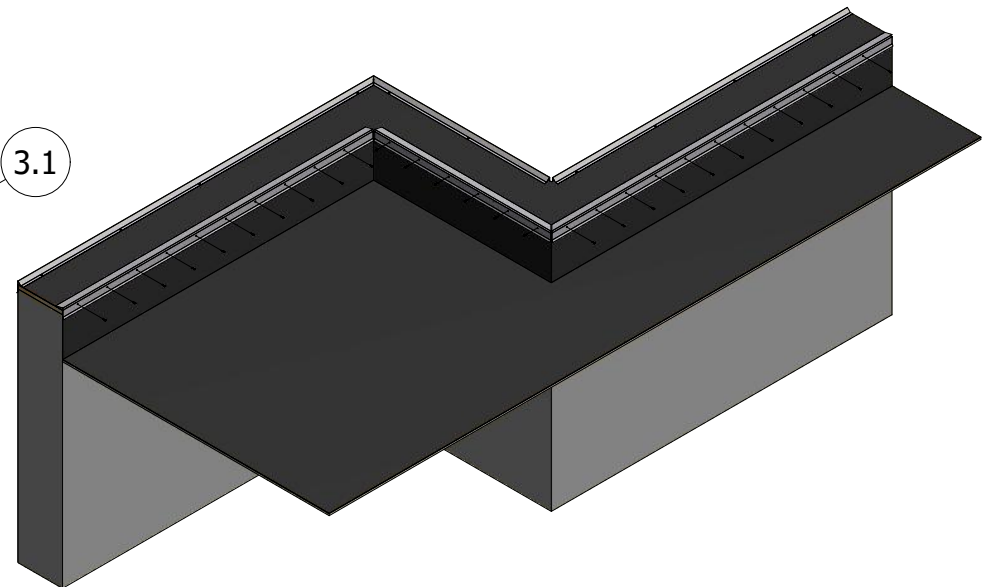
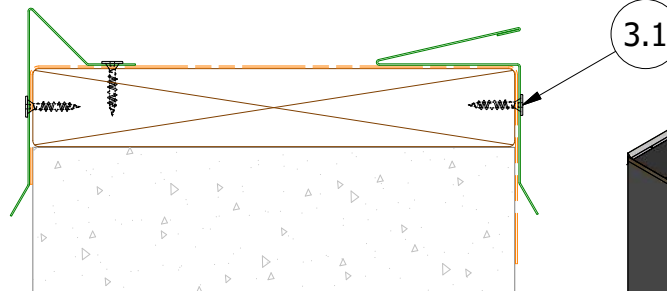
**Note:** Install fastener in the center of the slot for expansion and contraction.



**Step 3.1** Install Rear Spring Cleat with provided screws through the pre-punched slots.

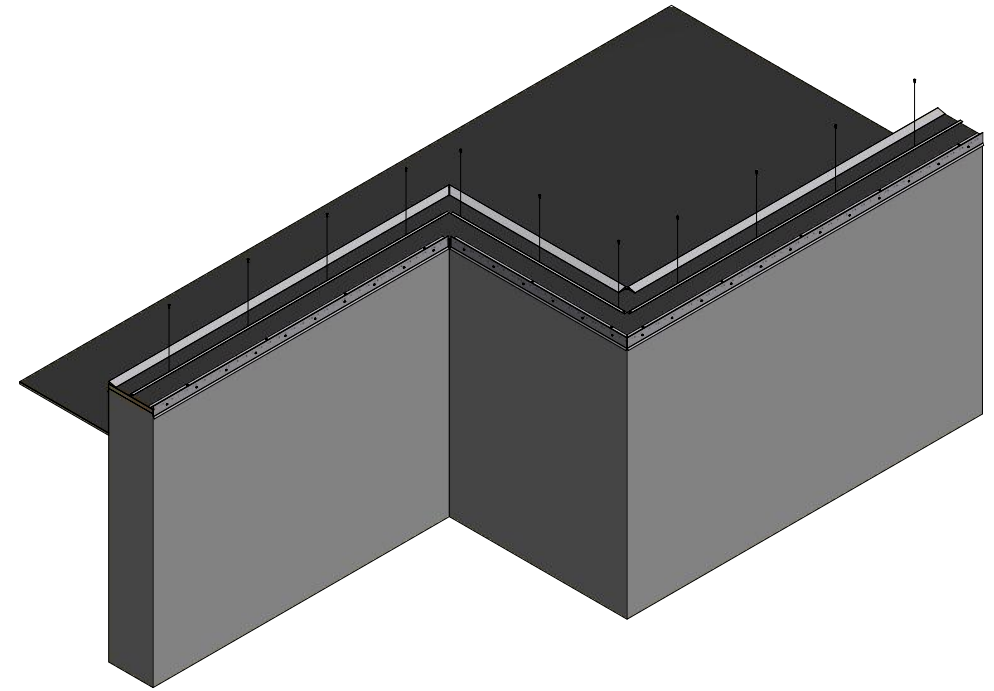
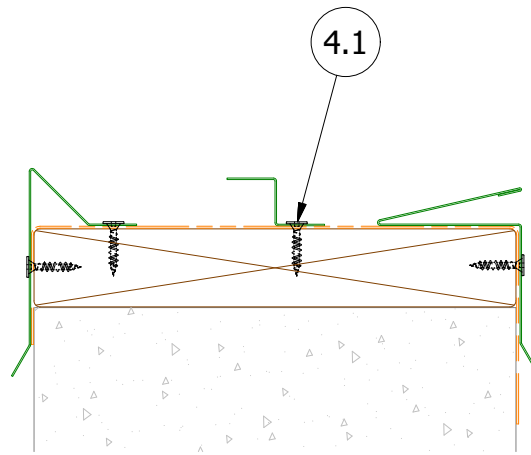
**Note:** Install fastener in the center of the slot for expansion and contraction.

**Note:** Shim between Rear Spring Cleat and Wood Nailer as required.



**Step 4.1** For wall widths 18" or greater, secure a continuous Z-Support down the center of the wall by installing provided screws through pre-punched slots.

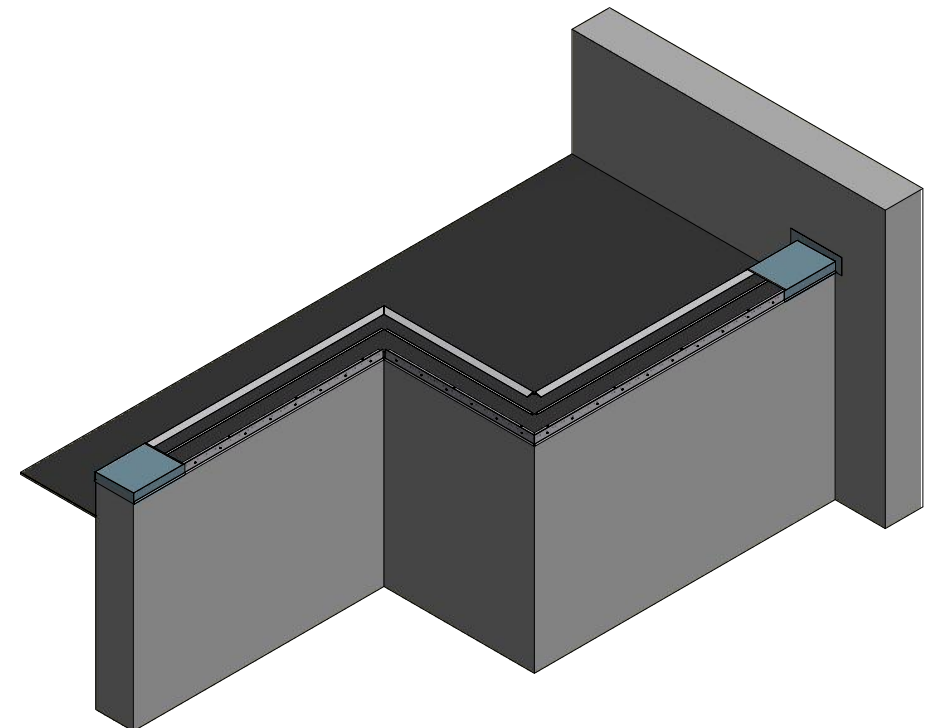
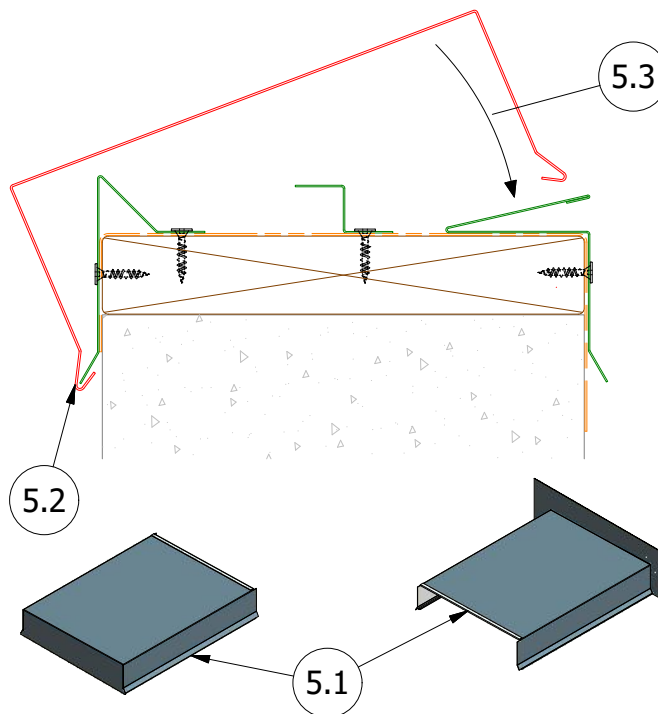
**Note:** Leave 1/8" gap between each Z-Support section for expansion.



**Step 5.1** Install End Closures and End Terms.

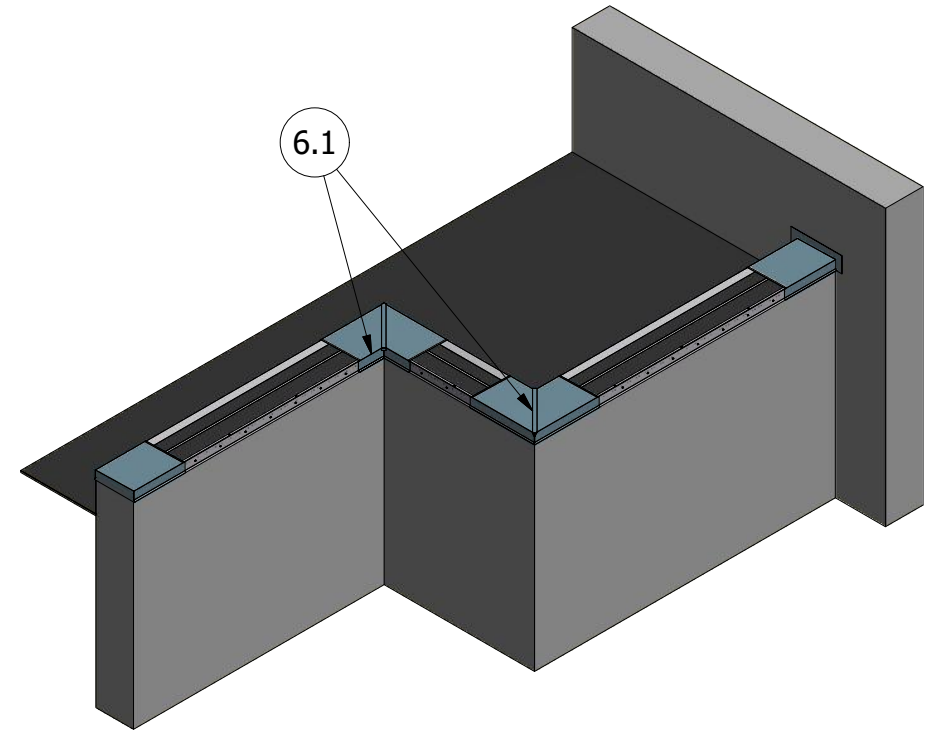
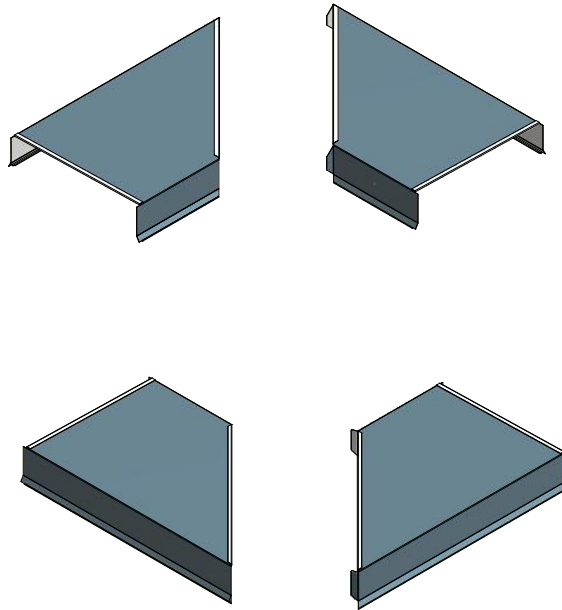
**Step 5.2** Engage front hem of Accessories into Front Cleat.

**Step 5.3** Push on rear of Accessories to engage Rear Spring Cleat.



**Step 6.1** Install  
Mitered Corners with  
Drive Cleats.

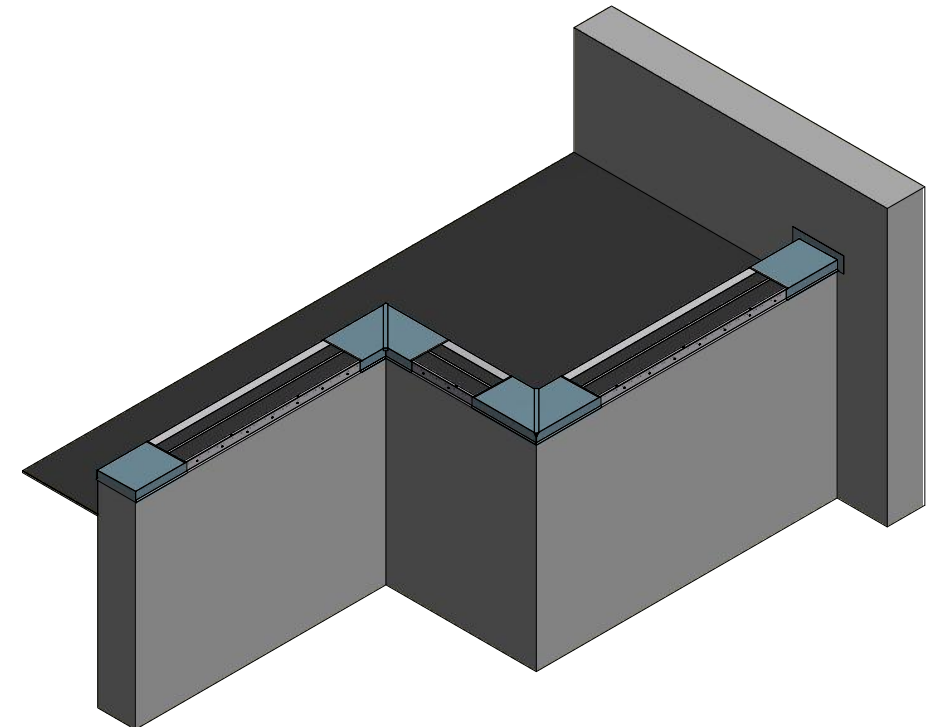
(see the Rapid-Lok SL  
Coping Cover Mitered  
Corner Splice  
Installation Detail for  
more detail)



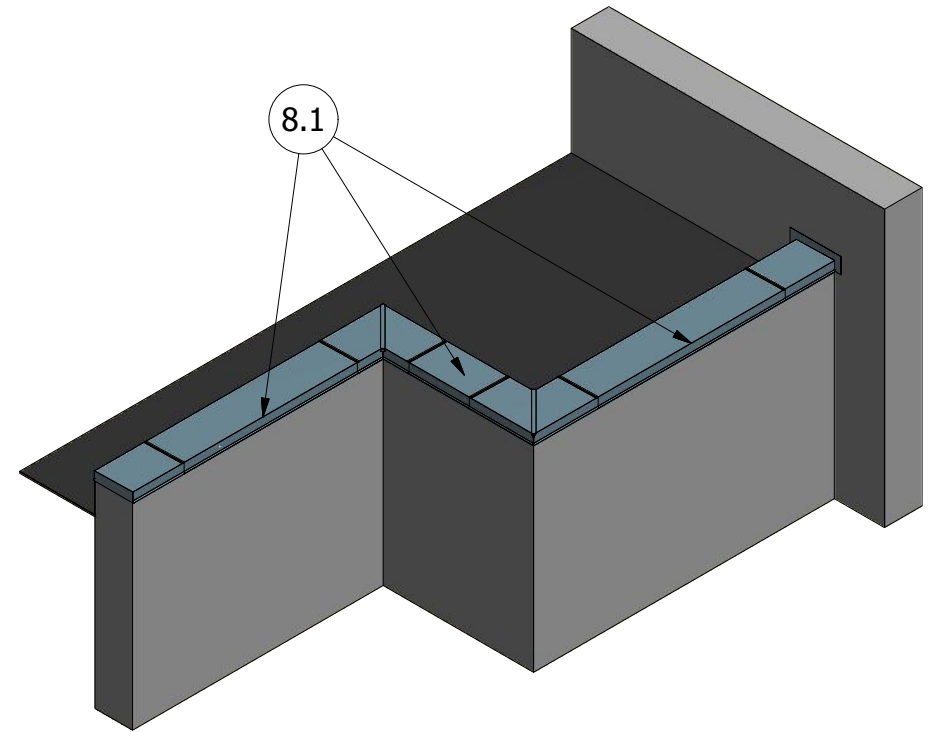
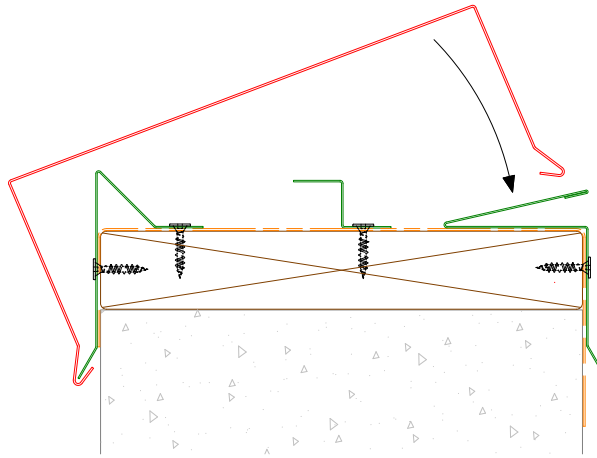
**Step 7.1** Plan Coping  
Cover layout to avoid  
cutting any section  
shorter than 5'-0" if  
possible, and to  
balance joints with cut  
sections at the center  
or both ends of a run.

Wrong (not balanced)		
12'	12'	5'

Correct (balanced)		
8'-6"	12'	8'-6"



**Step 8.1** Hook the coping Cover over the Front Cleat and rotate it back over the wall then snap the cover onto the Rear Spring Cleat by pushing down on top making sure rear hem engage the Rear Spring Cleat.



**Step 9.1** Install Drive Cleats on Coping Covers.

**Note:** See Drive Cleat Installation Detail for more information.

