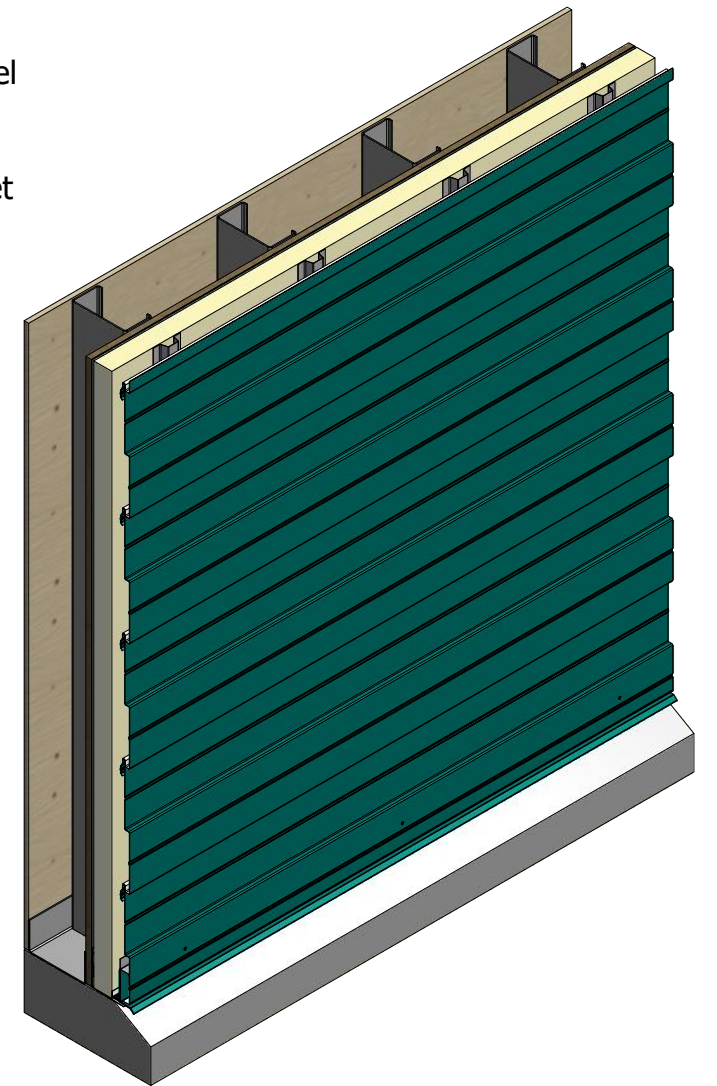
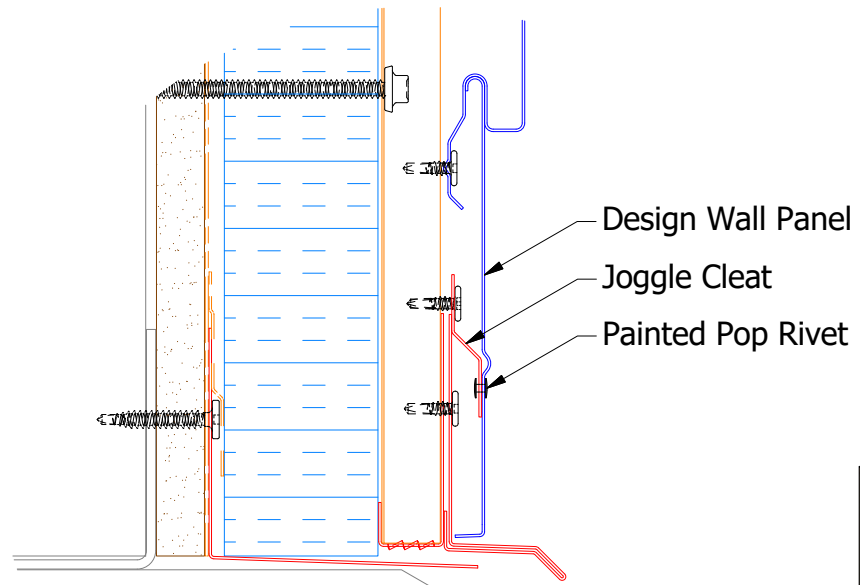
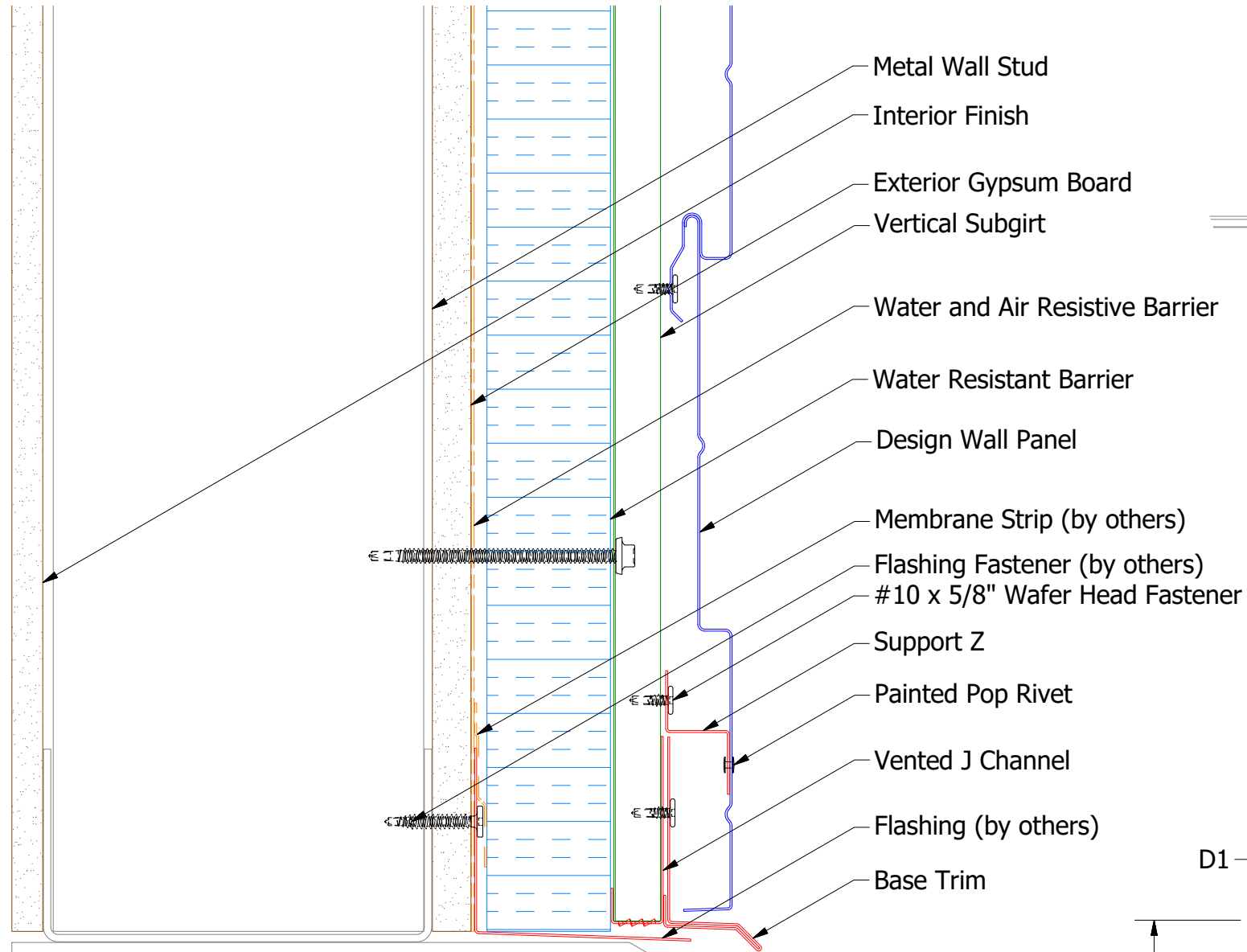
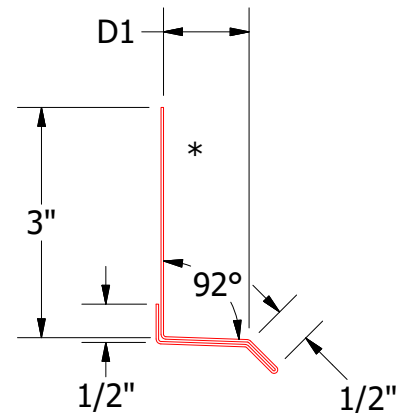


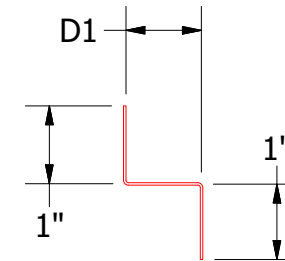
# Horizontal Panel



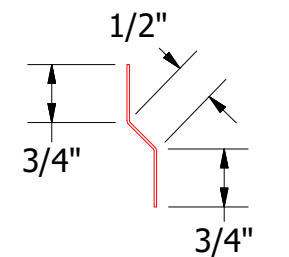
- Metal Wall Stud
- Interior Finish
- Exterior Gypsum Board
- Vertical Subgirt
- Water and Air Resistive Barrier
- Water Resistant Barrier
- Design Wall Panel
- Membrane Strip (by others)
- Flashing Fastener (by others)
- #10 x 5/8" Wafer Head Fastener
- Support Z
- Painted Pop Rivet
- Vented J Channel
- Flashing (by others)
- Base Trim



**Base Trim**  
 DWA661: D1= 1 1/4"  
 DSA661: D1= 2"



**Support Z**  
 DWA681: D1= 1"  
 DSA681: D1= 1 5/8"



**Joggle Cleat**  
 DWA975/DSA975

REV. NO.	DATE	DESCRIPTION OF REVISION	BY	APP

**ATAS** ATAS INTERNATIONAL, INC  
 Allentown PA  
 610-395-8445  
 Mesa AZ  
 480-558-7210

TITLE **Design Wall Open Base Detail**

DWG. NO.	DR	DATE
	DMR	7/12/2016
MATERIAL	APP	DATE
SH. SIZE	B	SCALE
		X:X