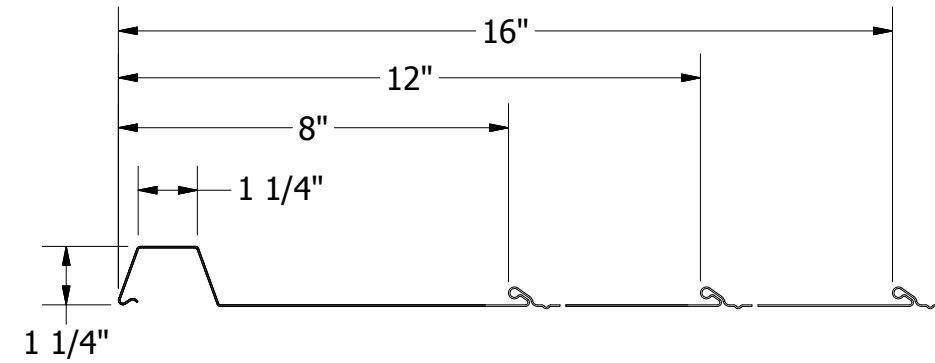
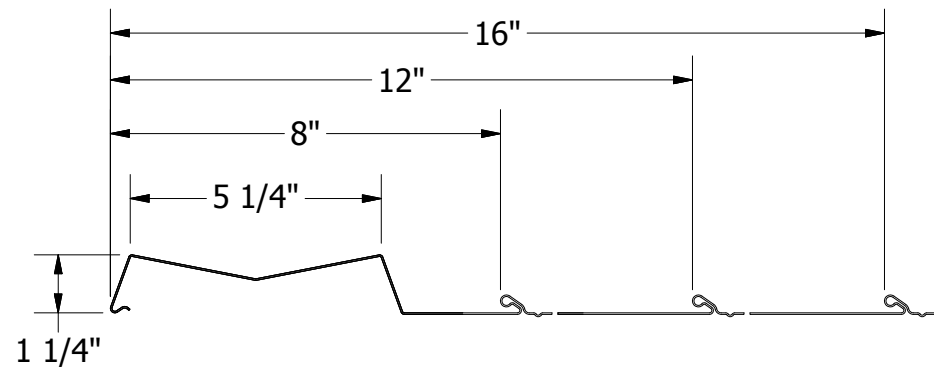


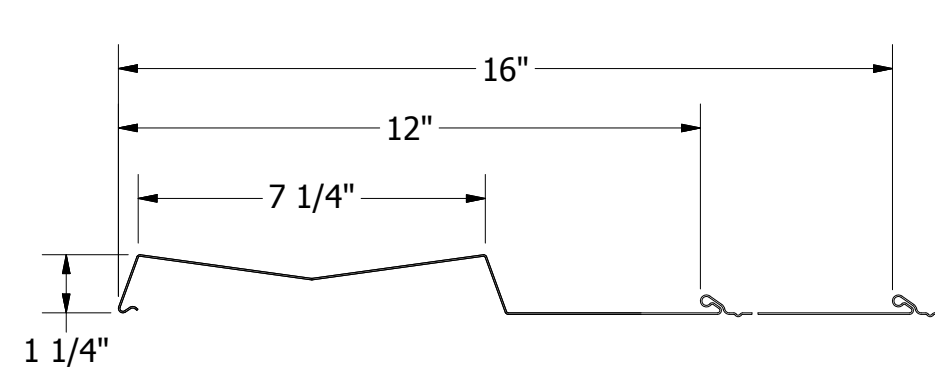
Multi-Purpose Panel (MPN)



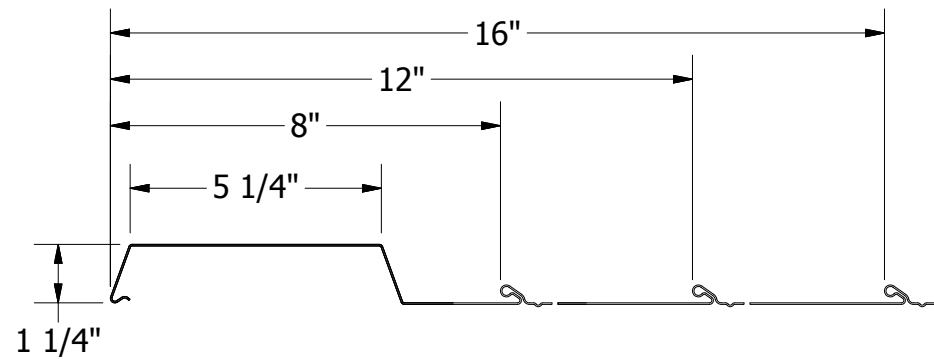
Multi-Purpose Panel (MPW)



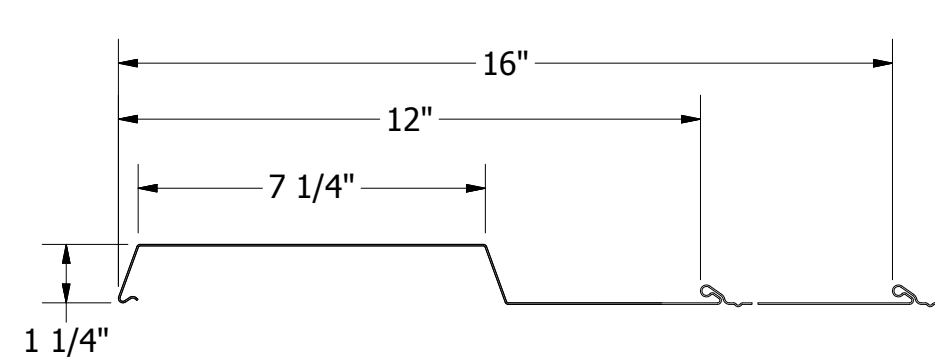
Multi-Purpose Panel (MPV)



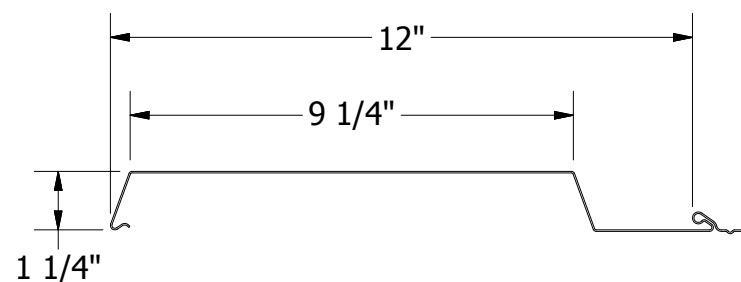
Multi-Purpose Panel (MPV)



Multi-Purpose Panel (MPH)



Multi-Purpose Panel (MPH)



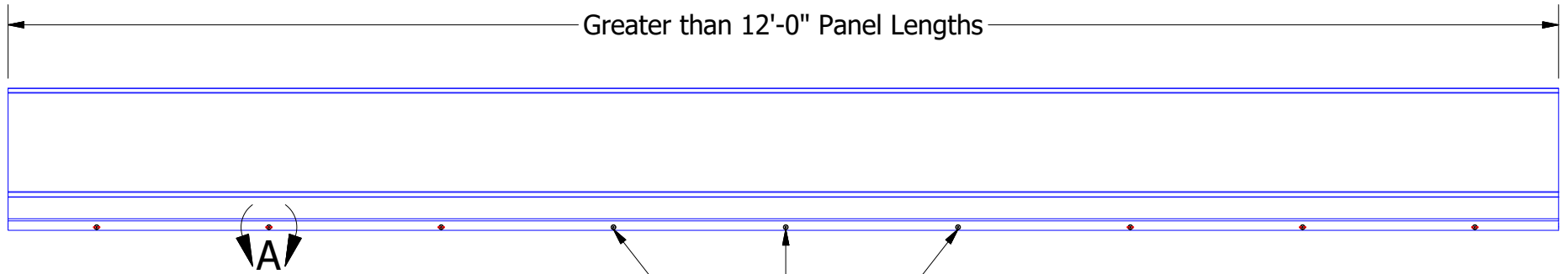
Multi-Purpose Panel (MPH)



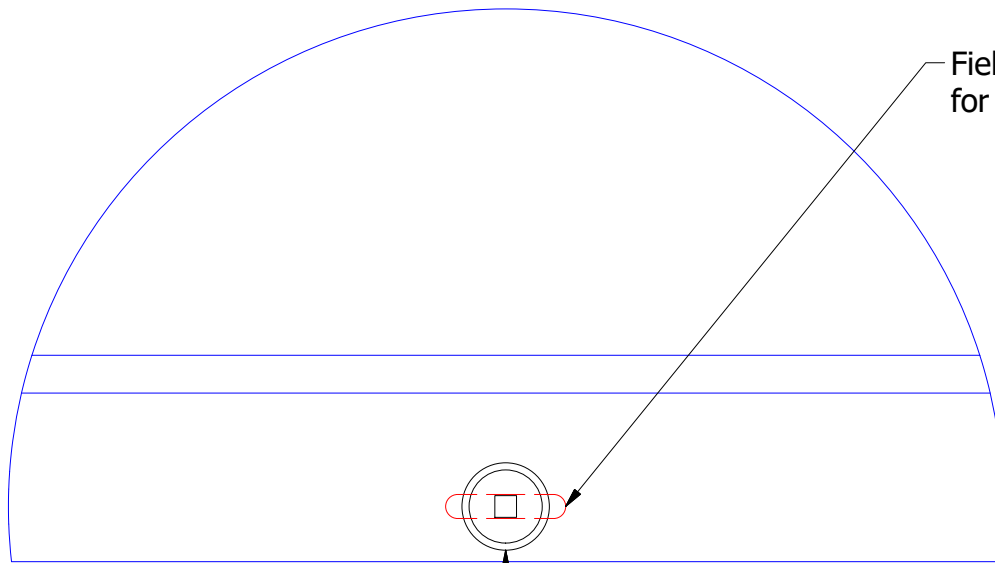
ATAS INTERNATIONAL, INC
 Allentown PA
 610-395-8445
 Mesa AZ
 480-558-7210

TITLE			MultiPurposePanel Detail		
DWG. NO.		DR	KRK	DATE	7/29/2016
		APP		DATE	
MATERIAL		SH. SIZE	B	SCALE	X:X

REV. NO.	DATE	DESCRIPTION OF REVISION	BY	APP

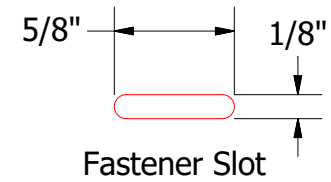


Pin Panel in Center (x3)



DETAIL A

Field Pre-Punch Fastener Slots to allow for Panel Expansion and Contraction.



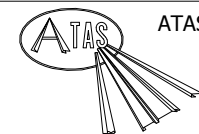
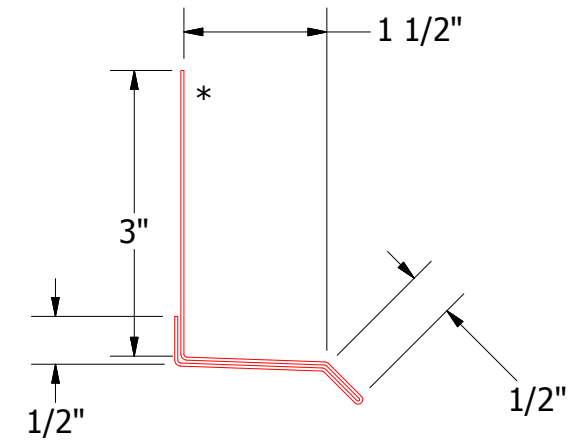
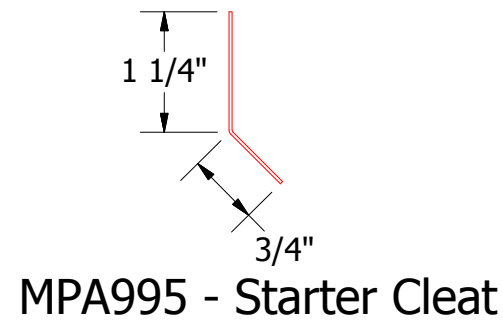
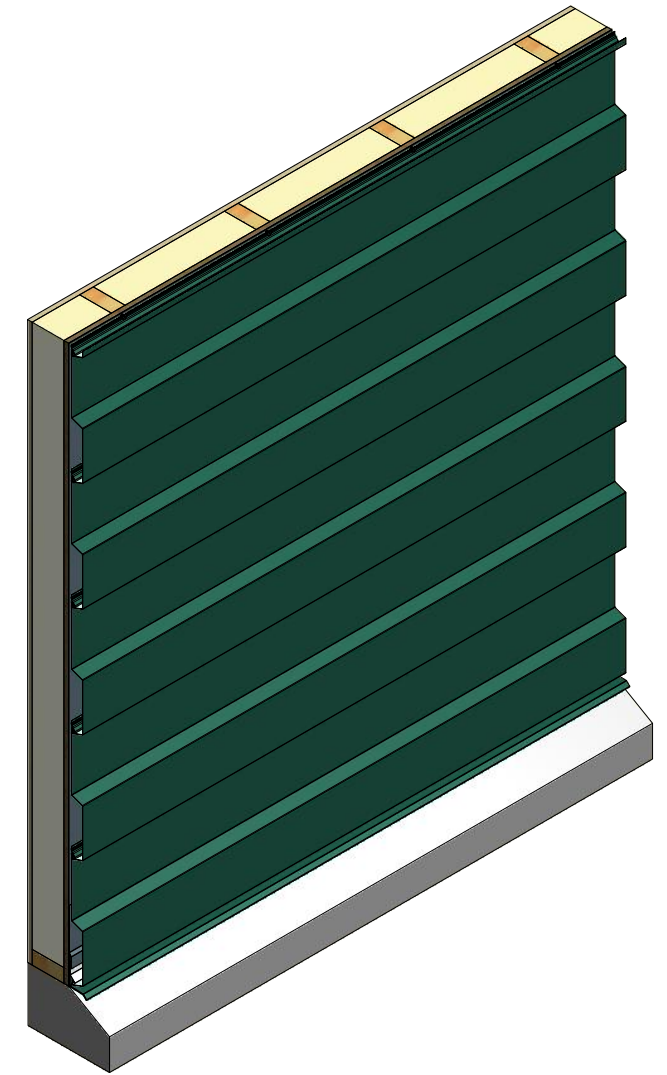
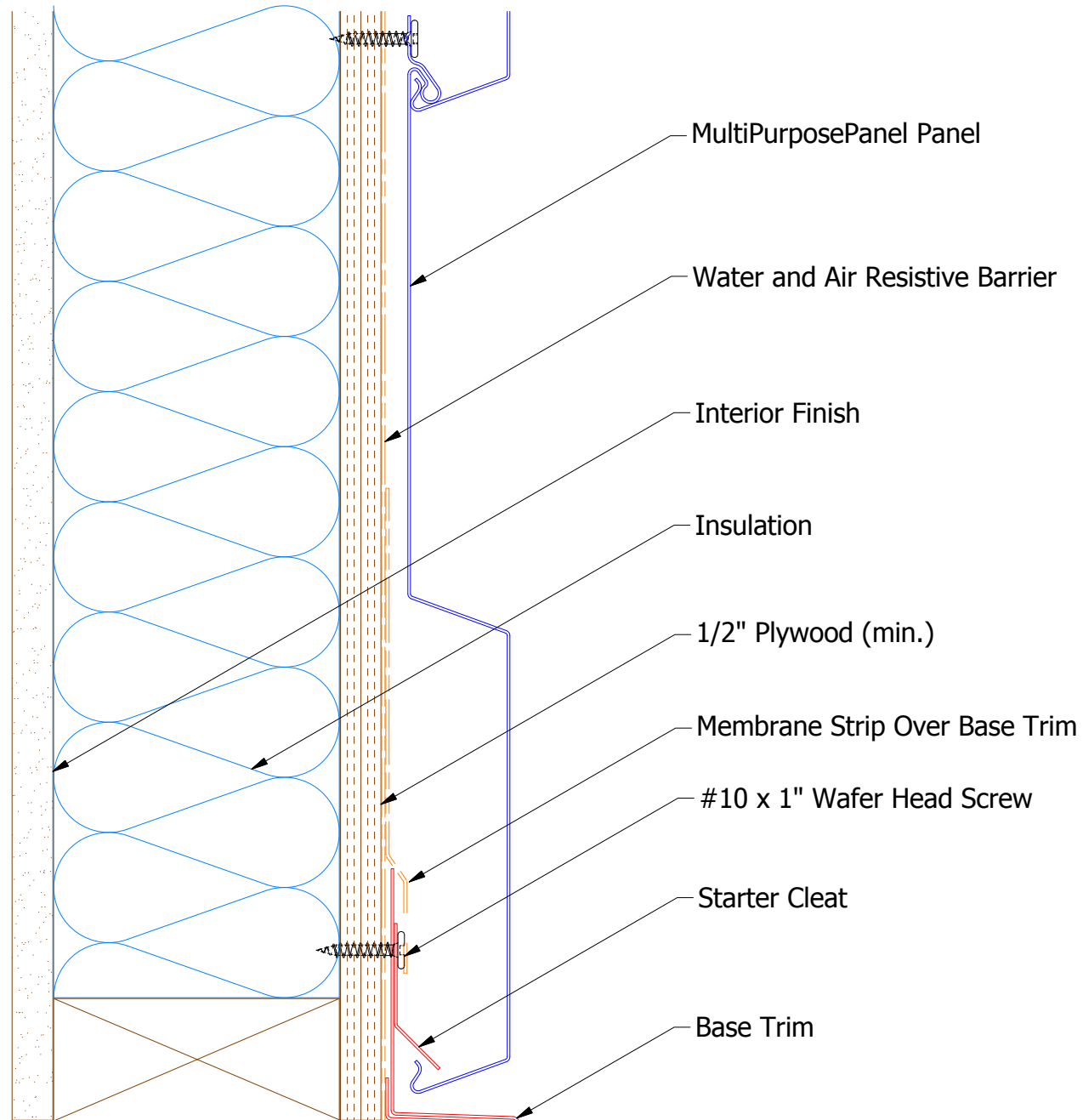
Secure Fastener in Center of the Slot


ATAS INTERNATIONAL, INC
 Allentown PA
 610-395-8445
 Mesa AZ
 480-558-7210

TITLE			Multi-Purpose Fastener Slots Detail	
DWG. NO.		DR	DMR	DATE
		APP		5/13/2021
MATERIAL		SH. SIZE	A	SCALE
				X:X

REV. NO.	DATE	DESCRIPTION OF REVISION	BY	APP

Horizontal Panel

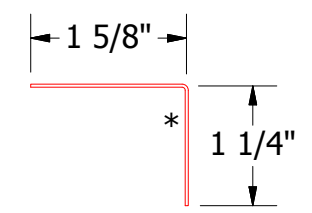
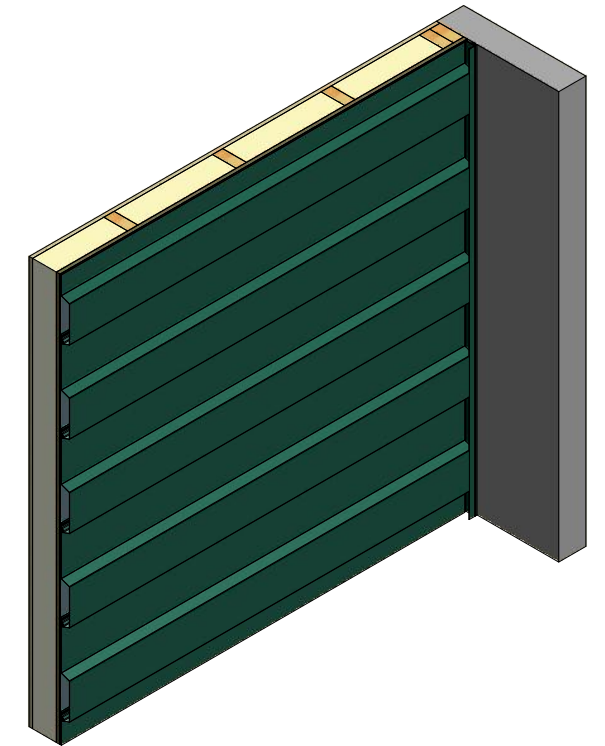
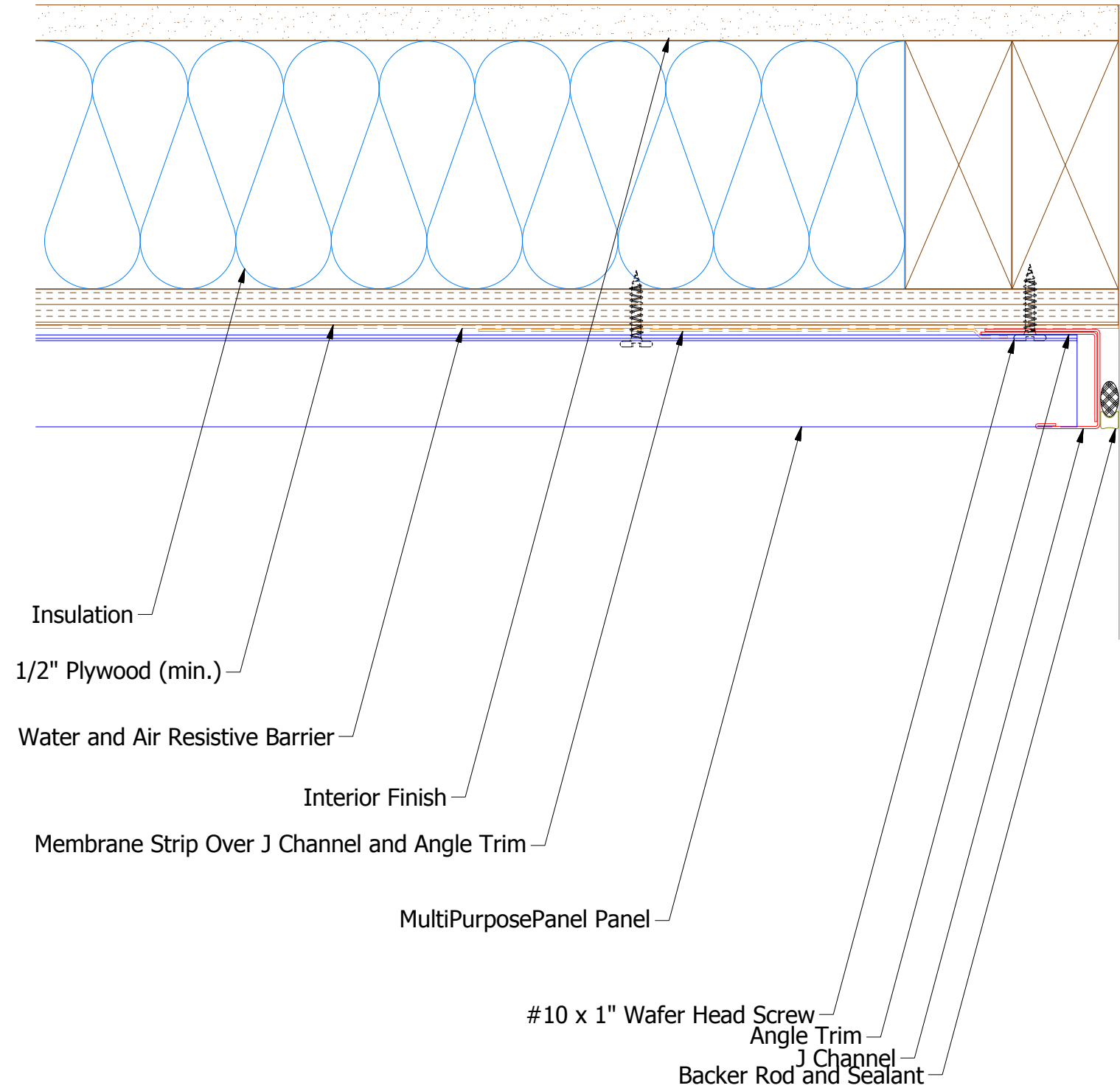


ATAS INTERNATIONAL, INC
 Allentown PA
 610-395-8445
 Mesa AZ
 480-558-7210

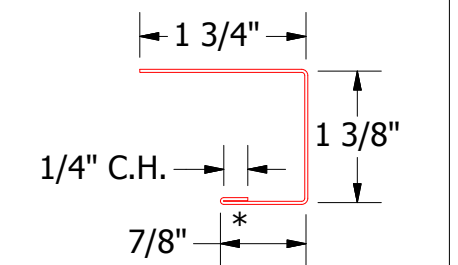
TITLE MultiPurposePanel Base Detail

REV. NO.	DATE	DESCRIPTION OF REVISION	BY	APP	DWG. NO.	DR MBP	DATE 7/12/2016
						APP DAS	DATE 7/29/16
					MATERIAL	SH. SIZE B	SCALE X:X

Horizontal Panel



MPA680 - Angle Trim



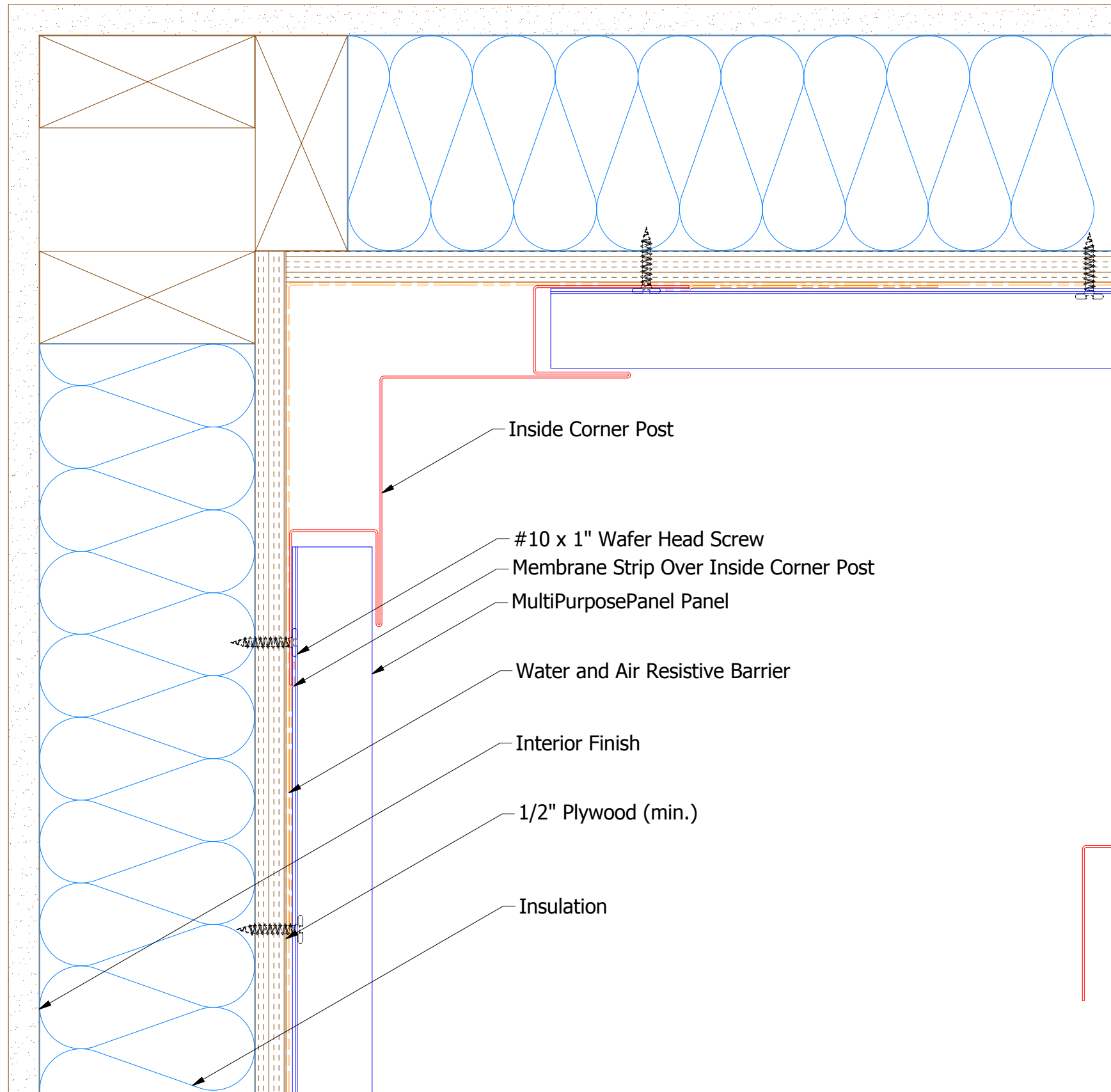
MPA138 - J Channel


ATAS INTERNATIONAL, INC
 Allentown PA
 610-395-8445
 Mesa AZ
 480-558-7210

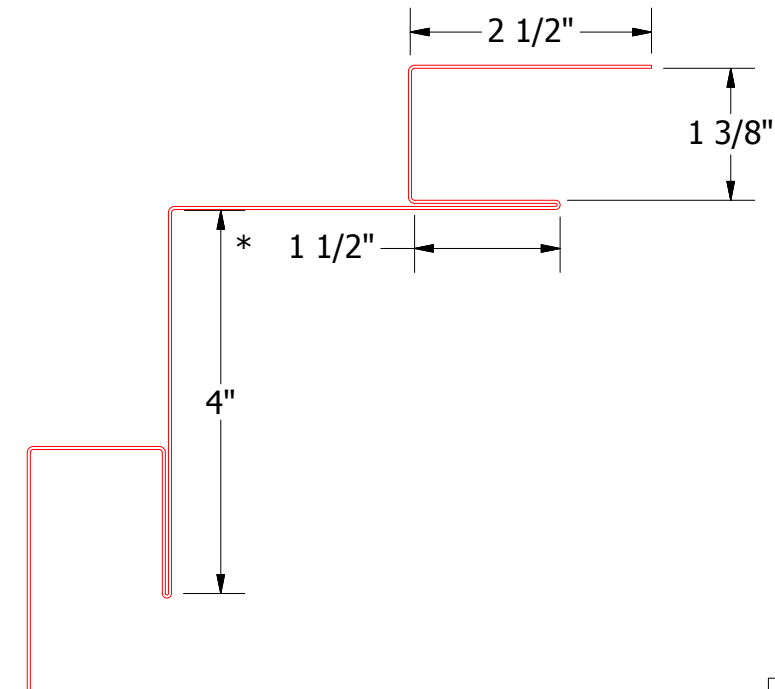
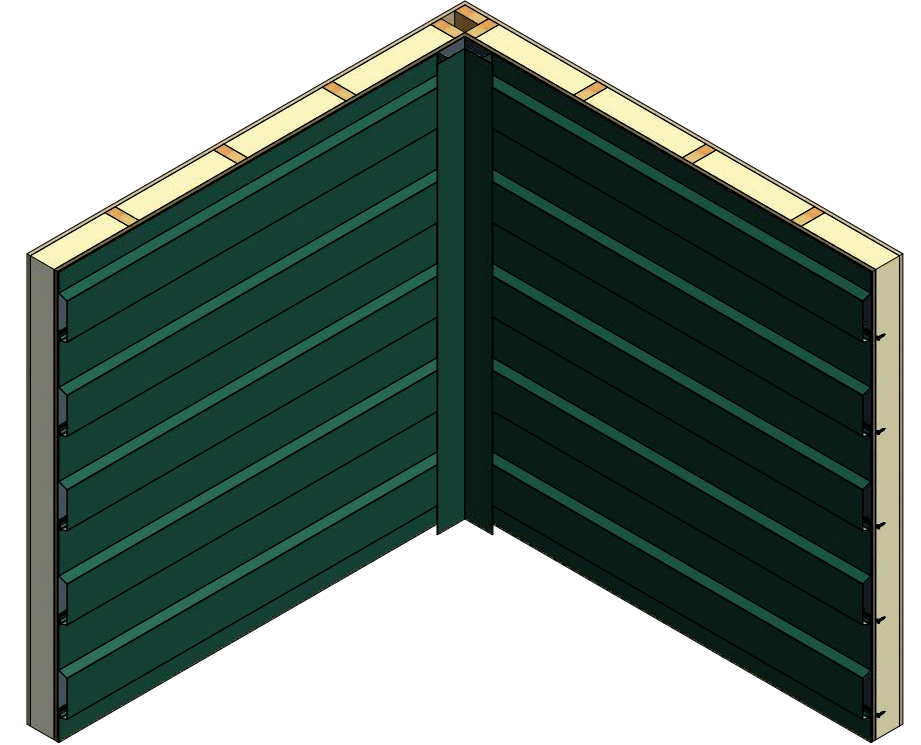
TITLE **MultiPurposePanel Endwall Detail**

REV. NO.	DATE	DESCRIPTION OF REVISION	BY	APP	DWG. NO.	DR	DATE	MBP	7/12/2016
						APP	DATE	DAS	7/29/16
					MATERIAL	SH. SIZE	SCALE	B	X:X

Horizontal Panel



- Inside Corner Post
- #10 x 1" Wafer Head Screw
- Membrane Strip Over Inside Corner Post
- MultiPurposePanel Panel
- Water and Air Resistive Barrier
- Interior Finish
- 1/2" Plywood (min.)
- Insulation



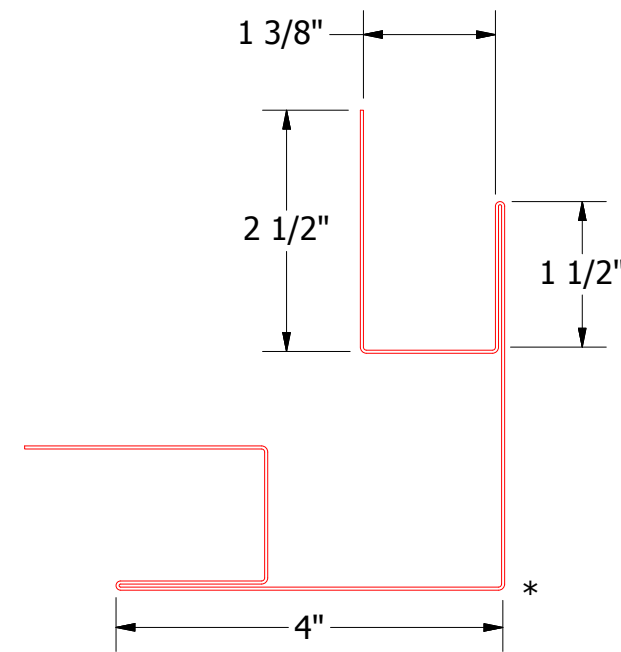
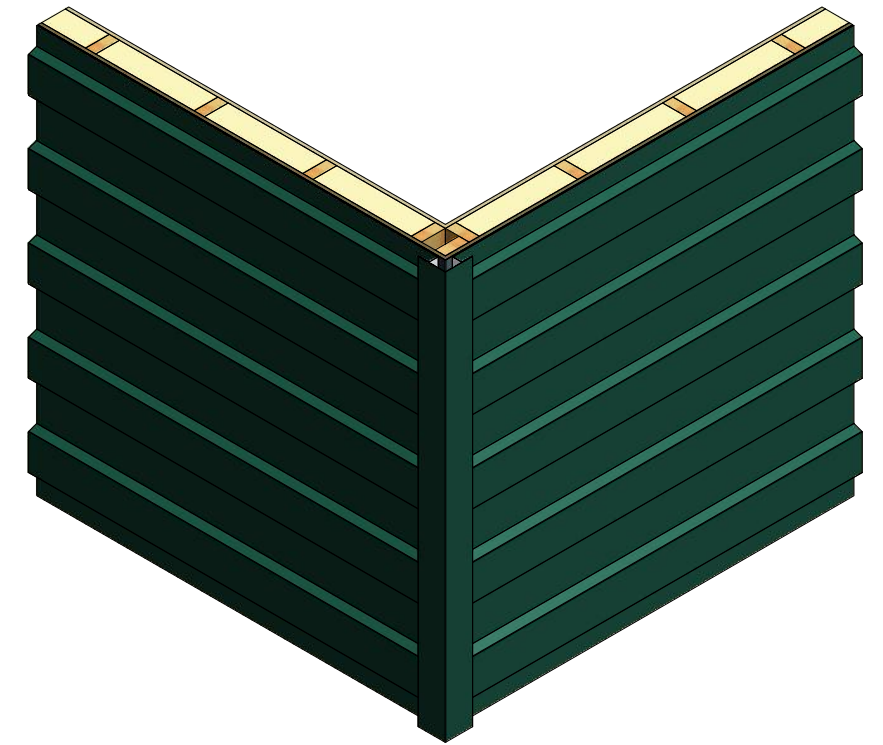
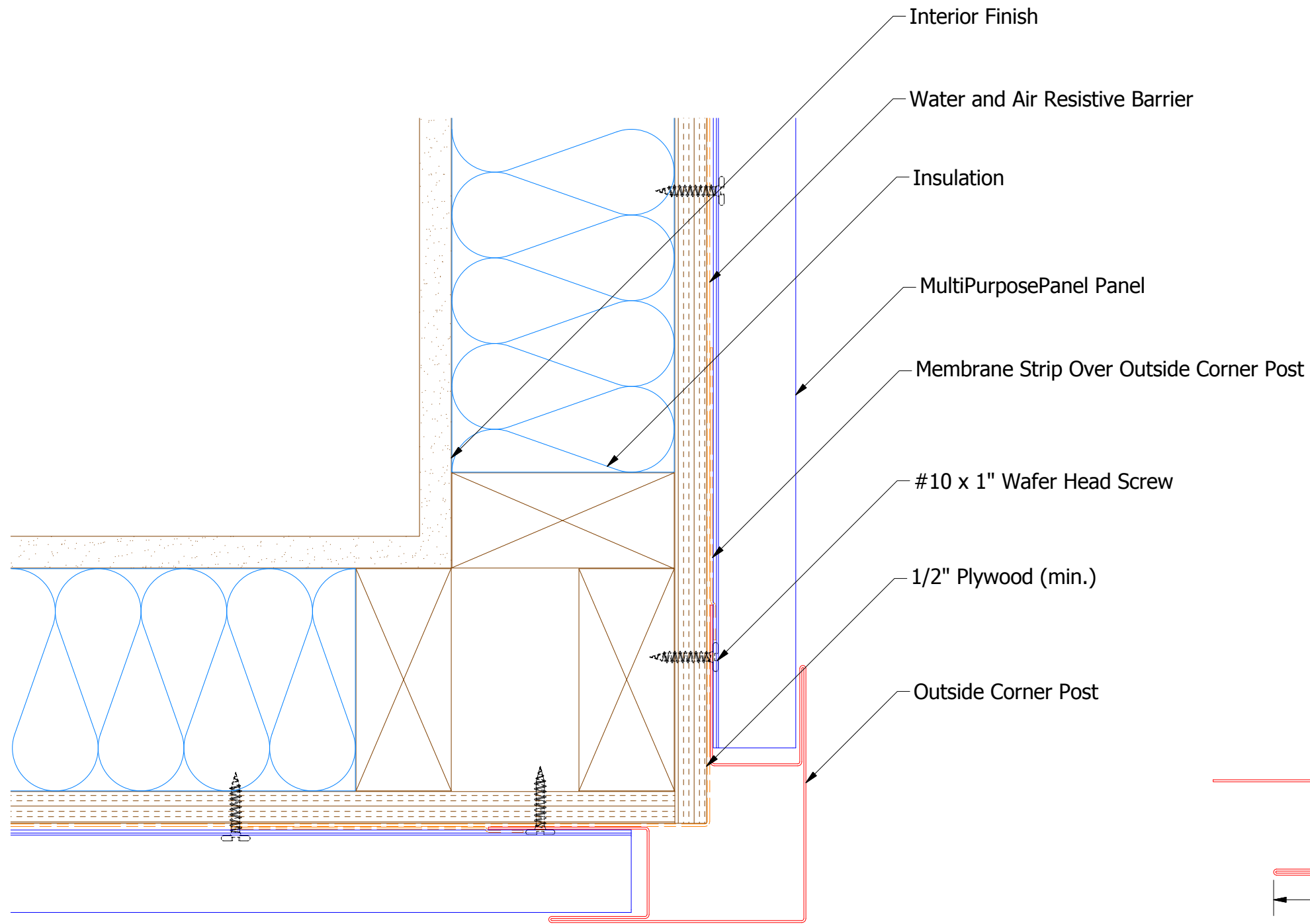
MPA601 - Inside Corner Post

ATAS
 ATAS INTERNATIONAL, INC
 Allentown PA
 610-395-8445
 Mesa AZ
 480-558-7210

MultiPurposePanel Inside Corner Detail

REV. NO.	DATE	DESCRIPTION OF REVISION	BY	APP	DWG. NO.	DR	DATE
						MBP	7/12/2016
						DAS	7/29/16
					MATERIAL	SH. SIZE	SCALE
						B	X:X

Horizontal Panel



MPA602 - Outside Corner Post

ATAS ATAS INTERNATIONAL, INC
 Allentown PA
 610-395-8445
 Mesa AZ
 480-558-7210

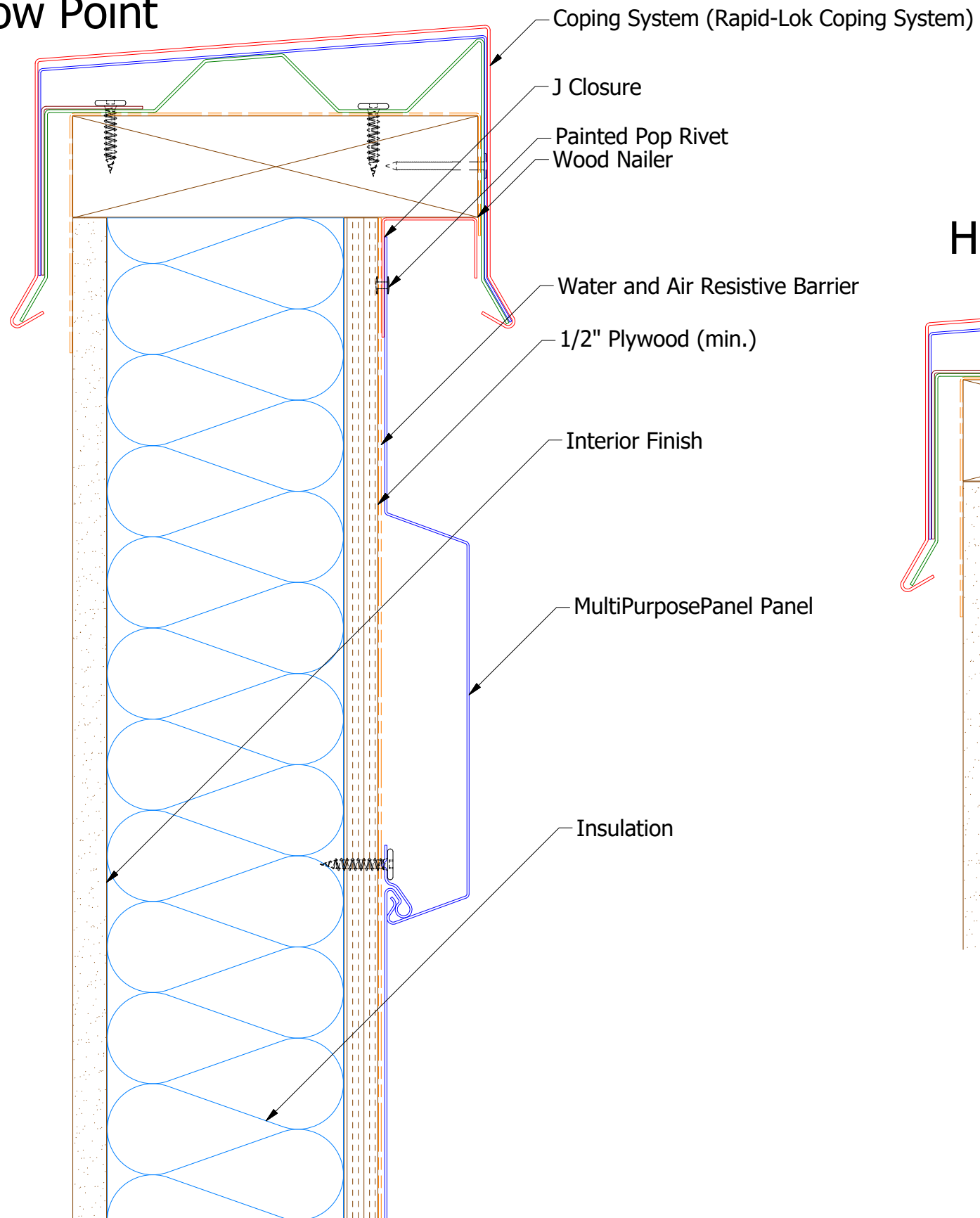
TITLE: MultiPurposePanel Outside Corner Detail

DR	MBP	DATE	7/13/2016
APP	DAS	DATE	7/29/16
SH. SIZE	B	SCALE	X:X

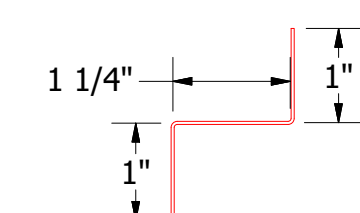
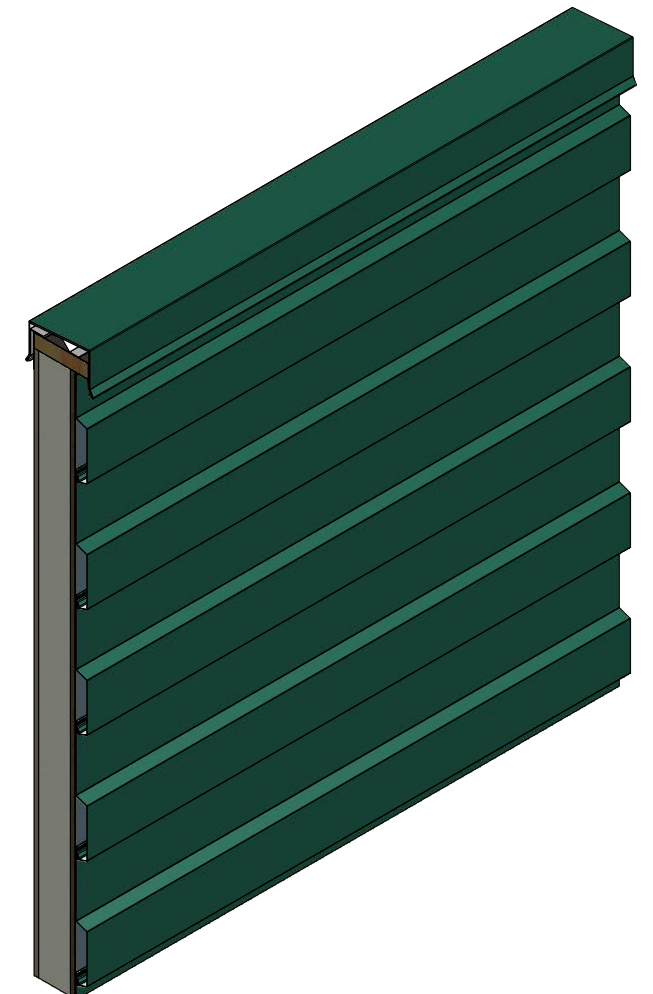
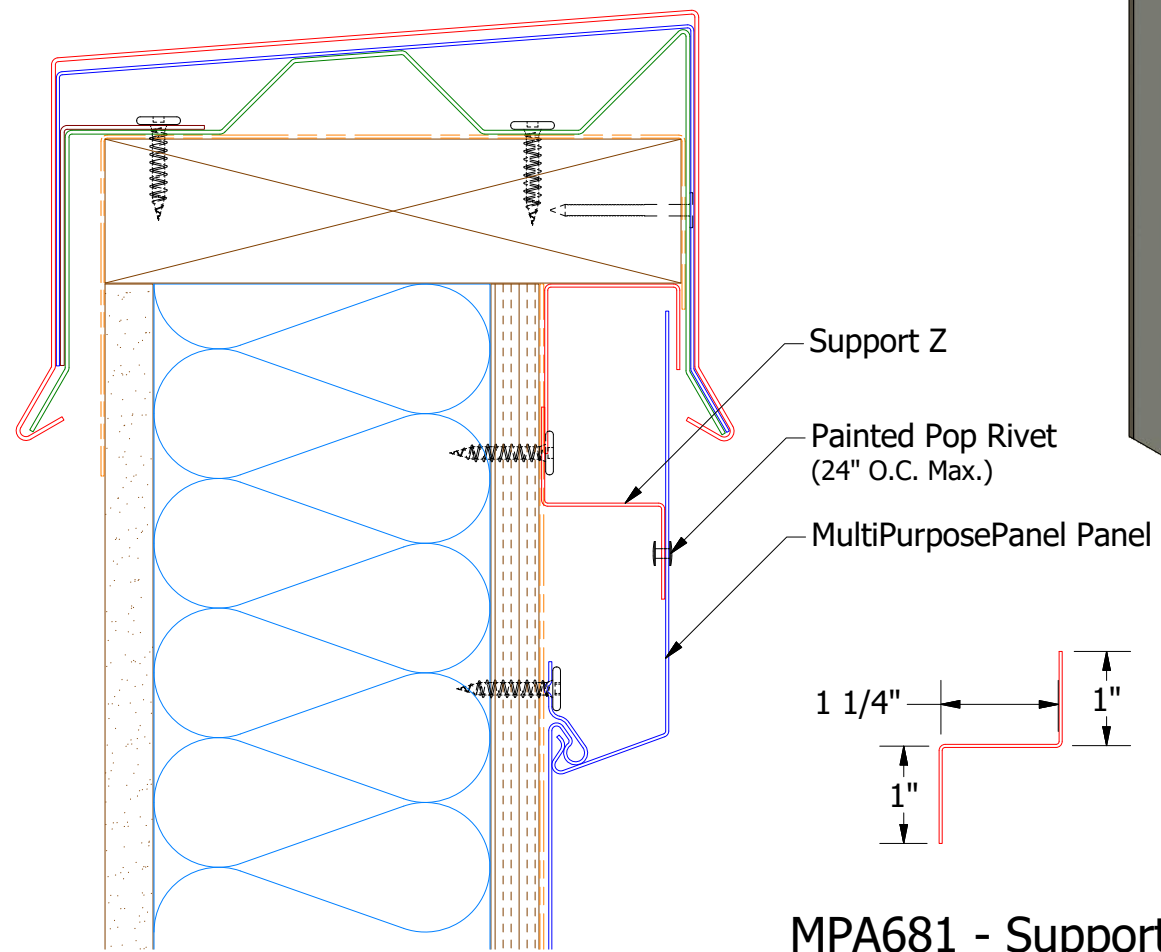
REV. NO.	DATE	DESCRIPTION OF REVISION	BY	APP

Horizontal Panel

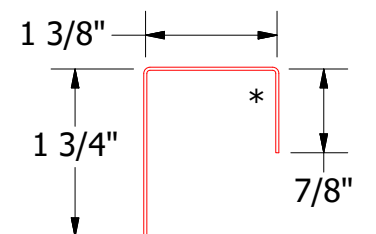
Low Point



High Point



MPA681 - Support Z



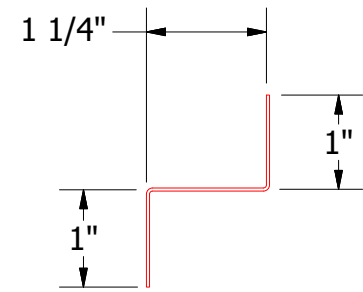
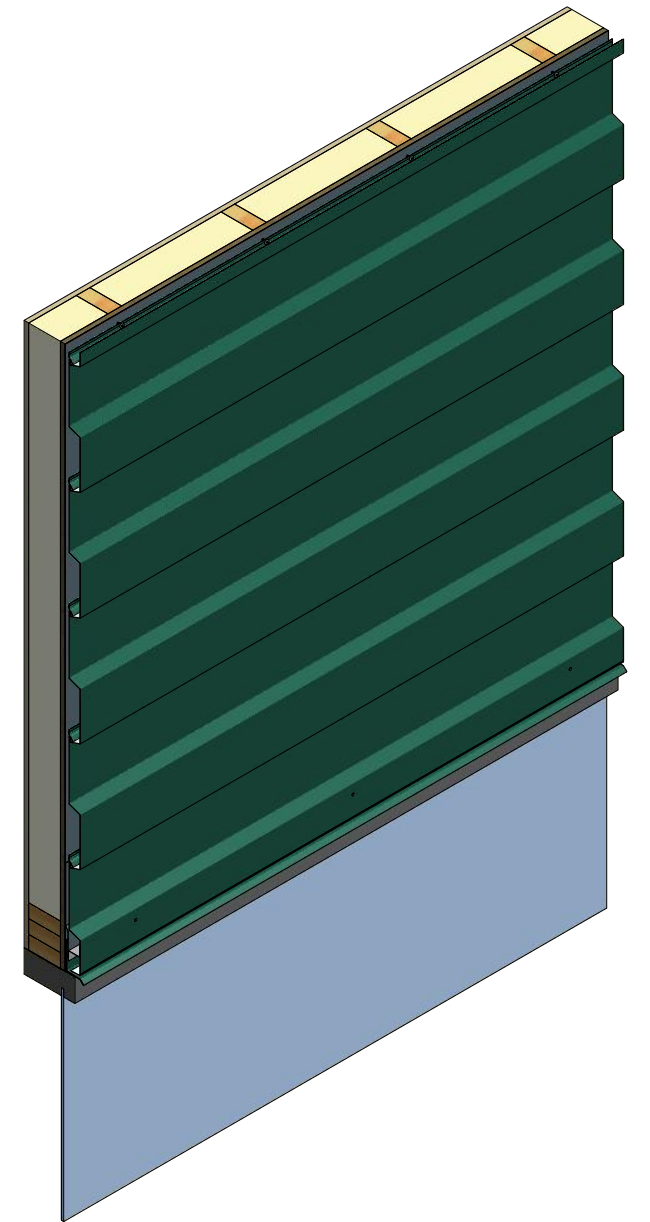
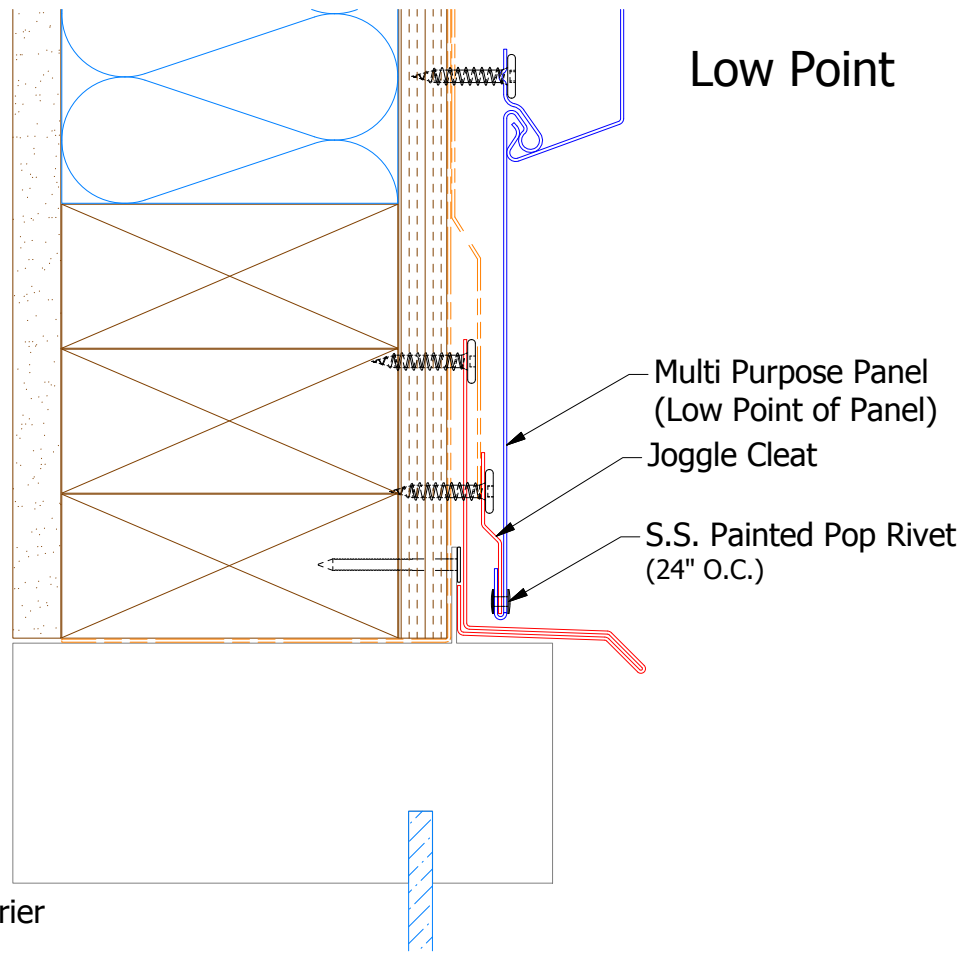
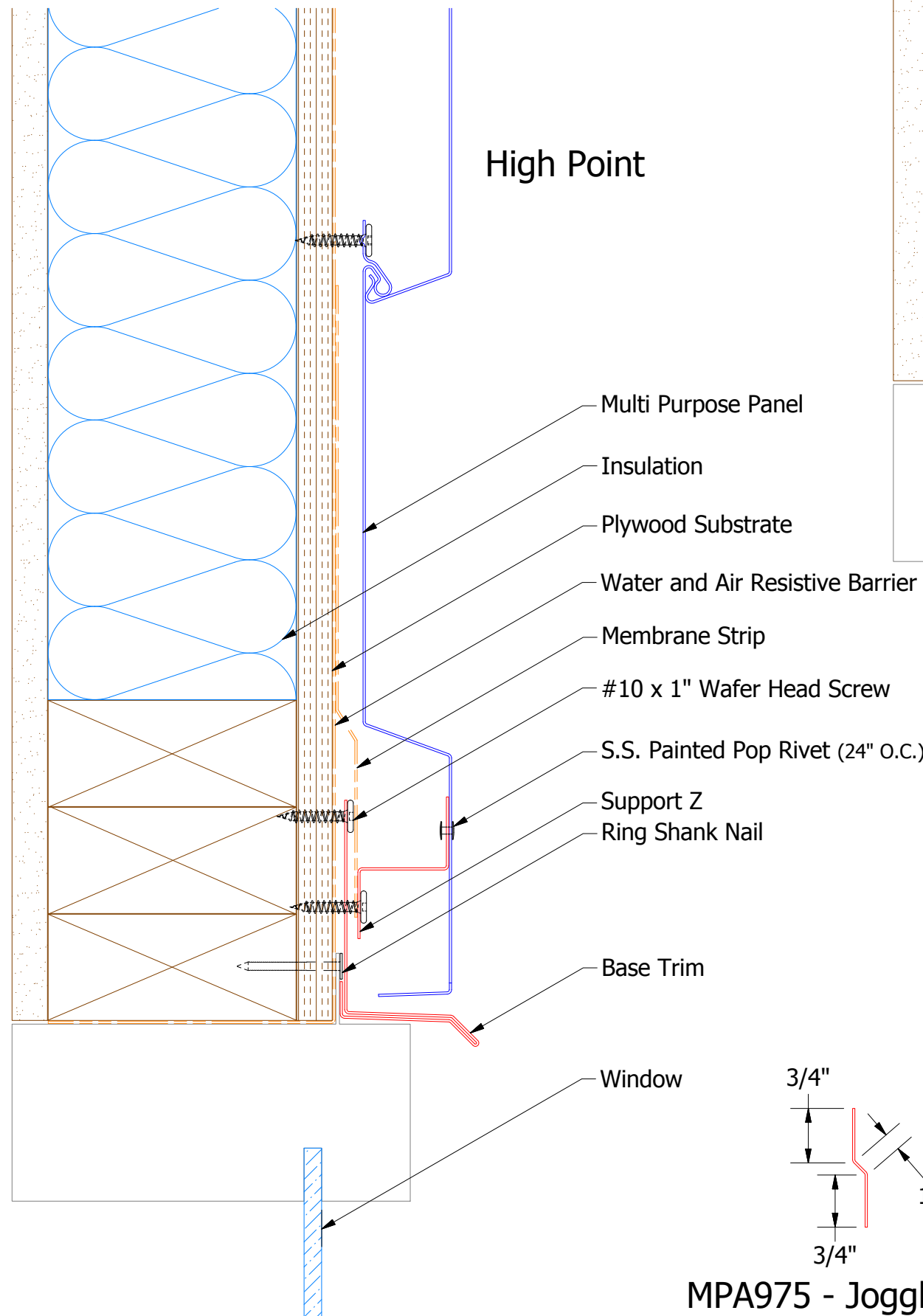
MPA270 - J Closure

ATAS ATAS INTERNATIONAL, INC
 Allentown PA
 610-395-8445
 Mesa AZ
 480-558-7210

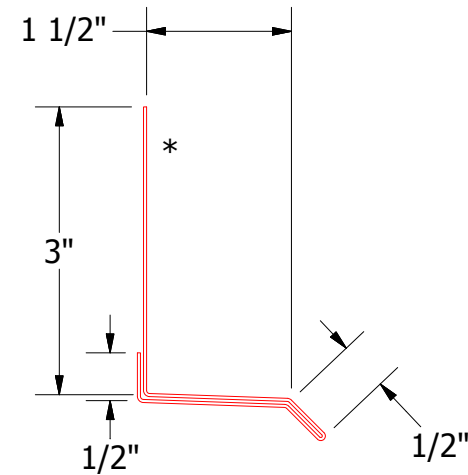
TITLE
MultiPurposePanel Top of Wall Detail

REV. NO.	DATE	DESCRIPTION OF REVISION	BY	APP	DWG. NO.	DR	DATE
						MBP	7/13/2016
						DAS	7/29/16
					MATERIAL	SH. SIZE	SCALE
						B	X:X

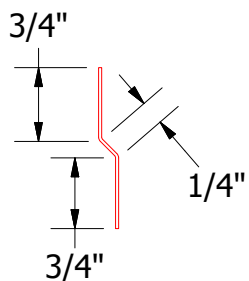
Horizontal Panel



MPA681 - Support Z

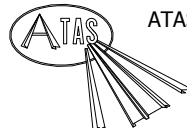


MPA661 - Base Trim

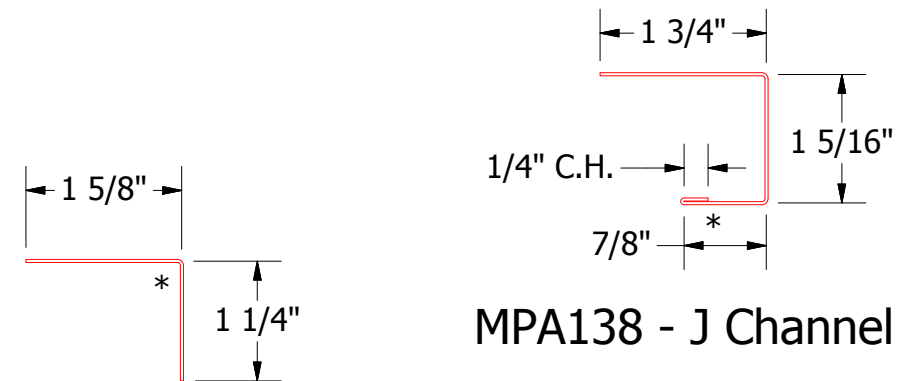
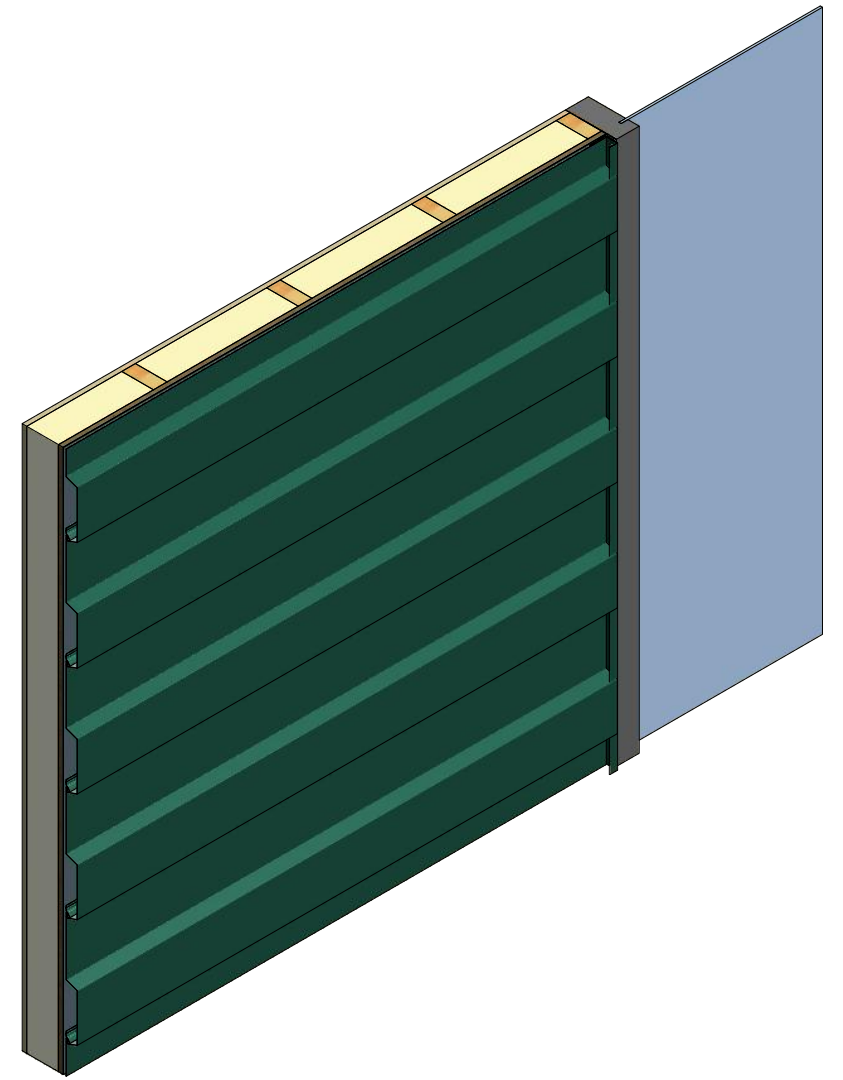
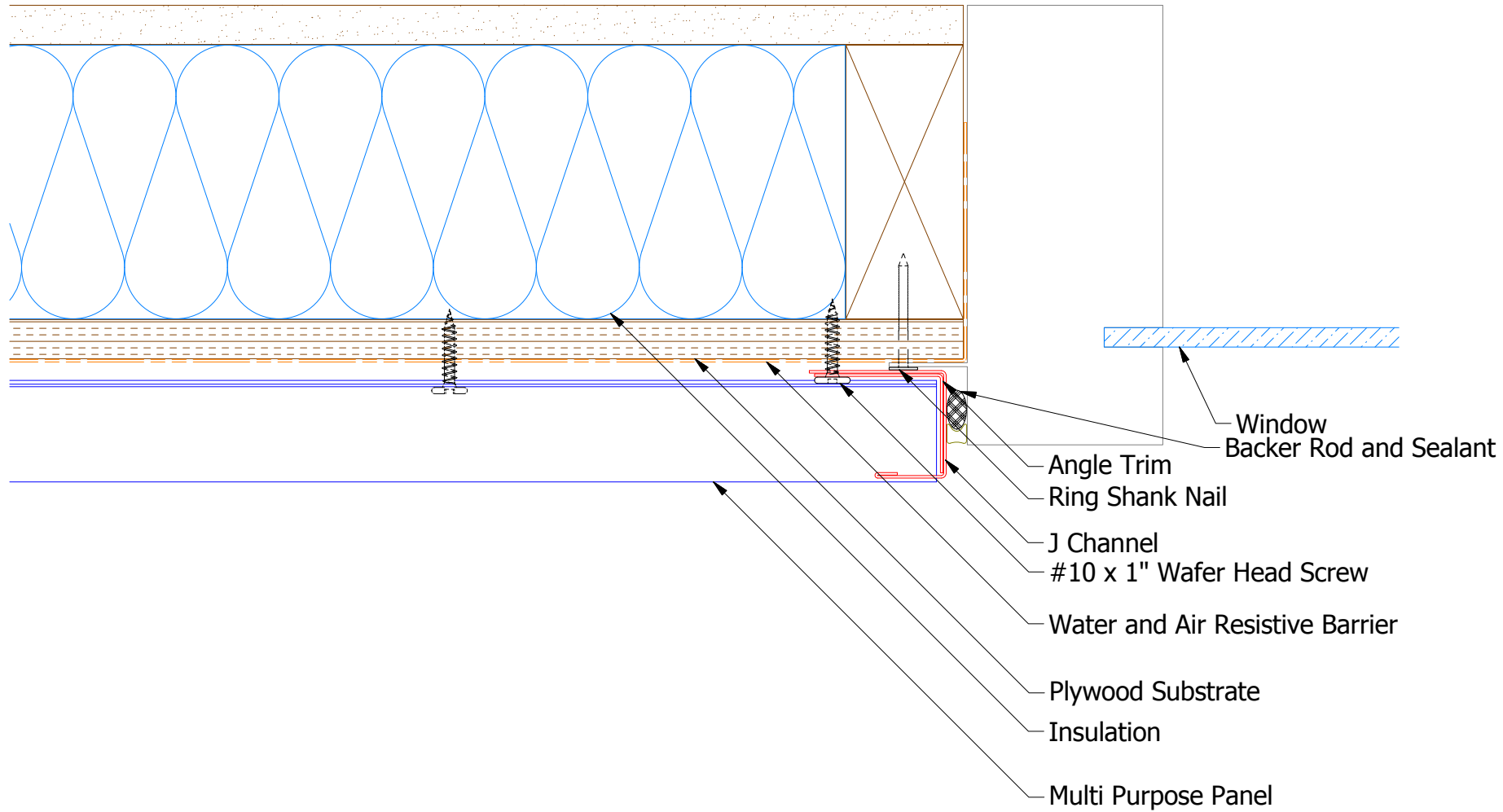


MPA975 - Joggle Cleat

Note: * denotes color side.

 ATAS INTERNATIONAL, INC Allentown PA 610-395-8445 Mesa AZ 480-558-7210		TITLE MultiPurposePanel Head Window Flange Detail		
		DWG. NO.	DR MBP APP	DATE 7/30/2018
REV. NO.	DATE	DESCRIPTION OF REVISION	BY APP	SH. SIZE B SCALE X:X

Horizontal Panel



MPA680 - Angle Trim

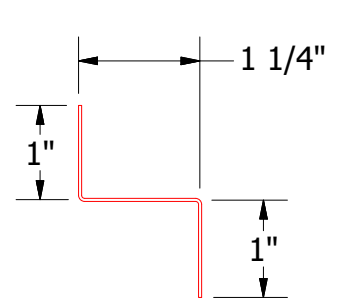
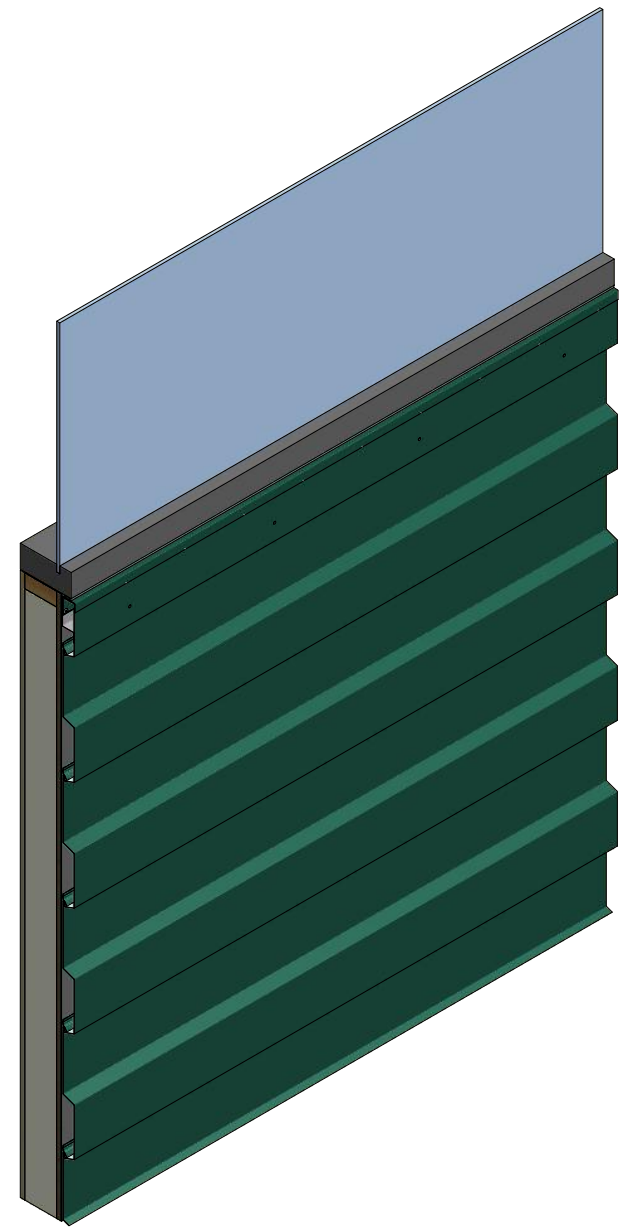
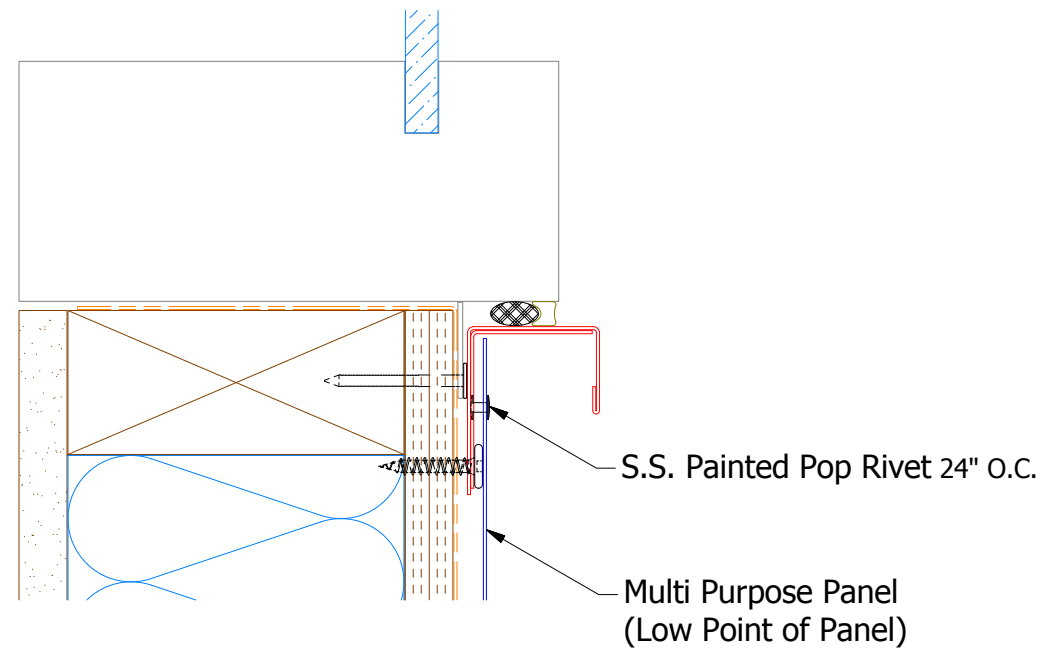
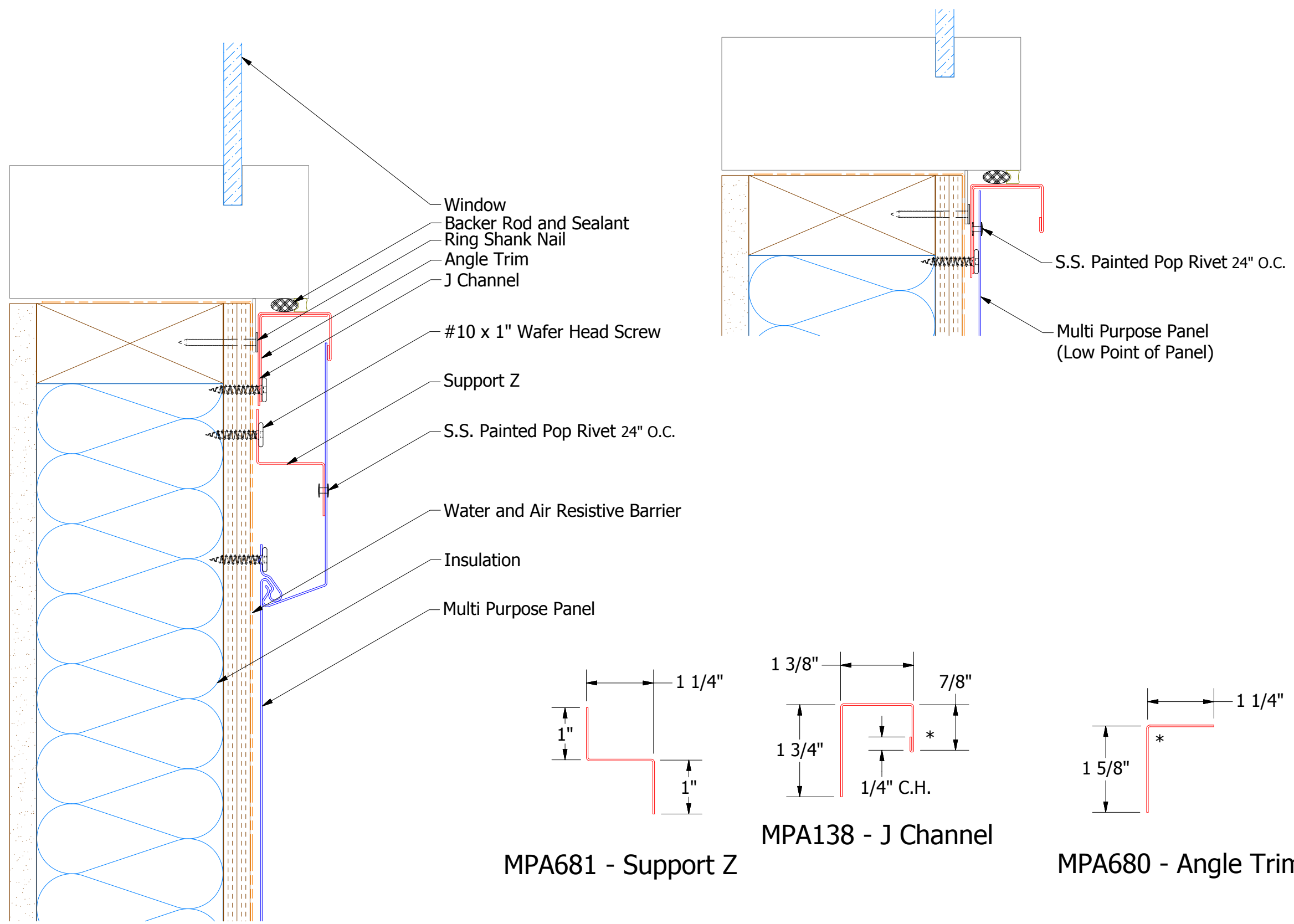
MPA138 - J Channel

ATAS ATAS INTERNATIONAL, INC
 Allentown PA
 610-395-8445
 Mesa AZ
 480-558-7210

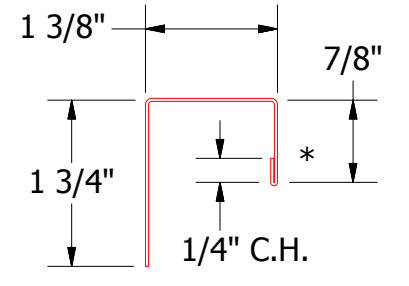
Note: * denotes color side.

REV. NO.	DATE	DESCRIPTION OF REVISION	BY	APP	TITLE	DR	DATE
					Multi Purpose Panel Jamb Window Flange Detail	MBP	7/31/2018
						APP	DATE
						SH. SIZE	B
						SCALE	X:X

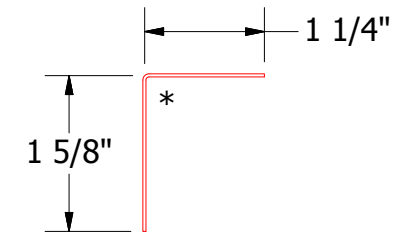
Horizontal Panel



MPA681 - Support Z



MPA138 - J Channel



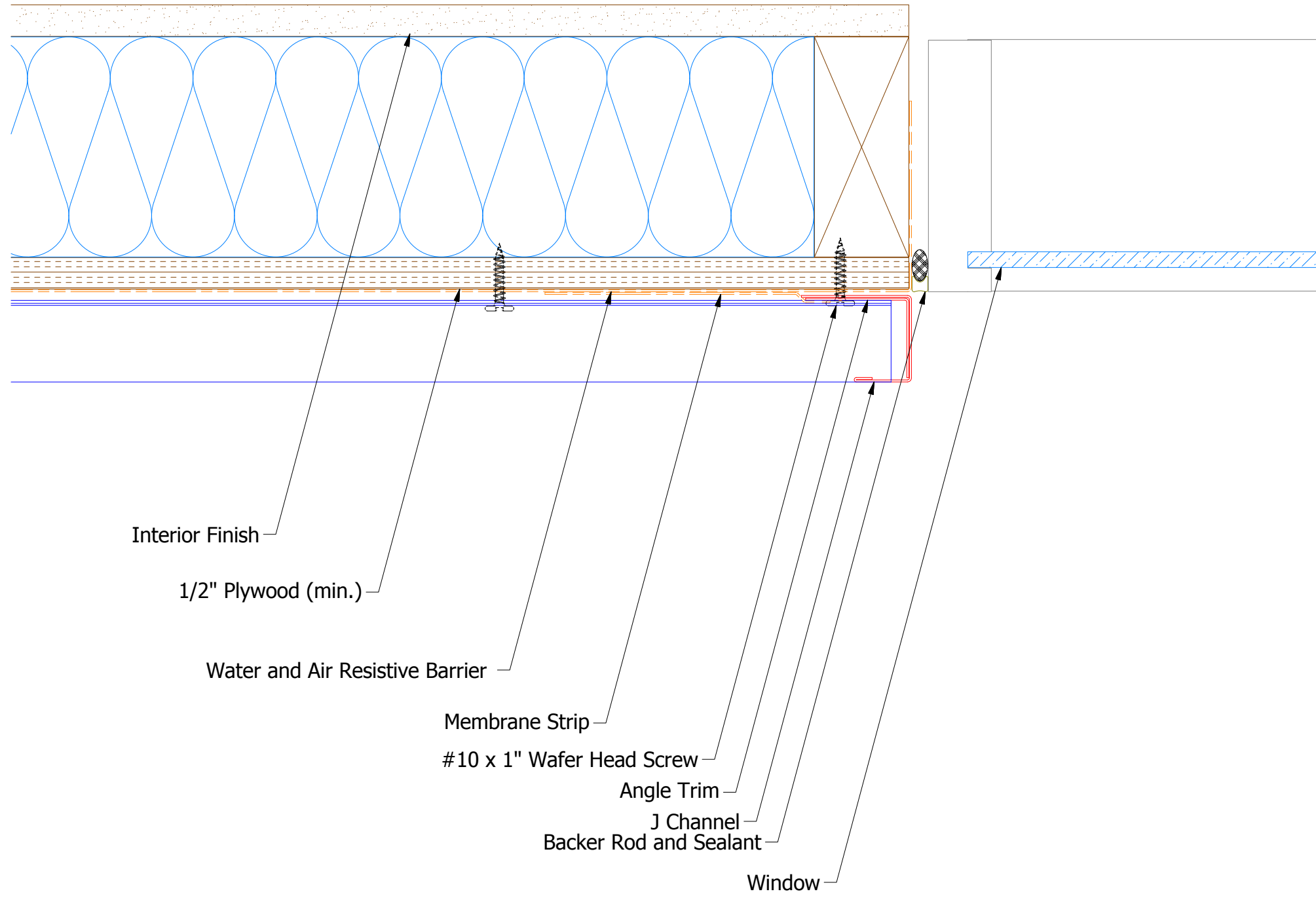
MPA680 - Angle Trim

Note: * denotes color side.

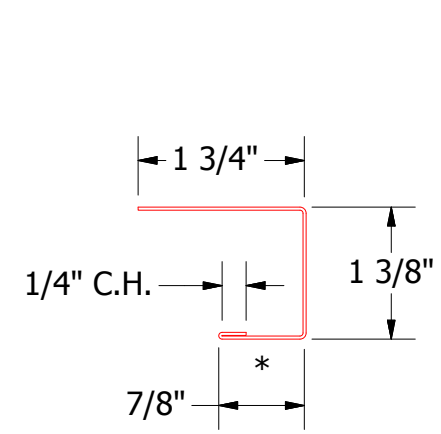
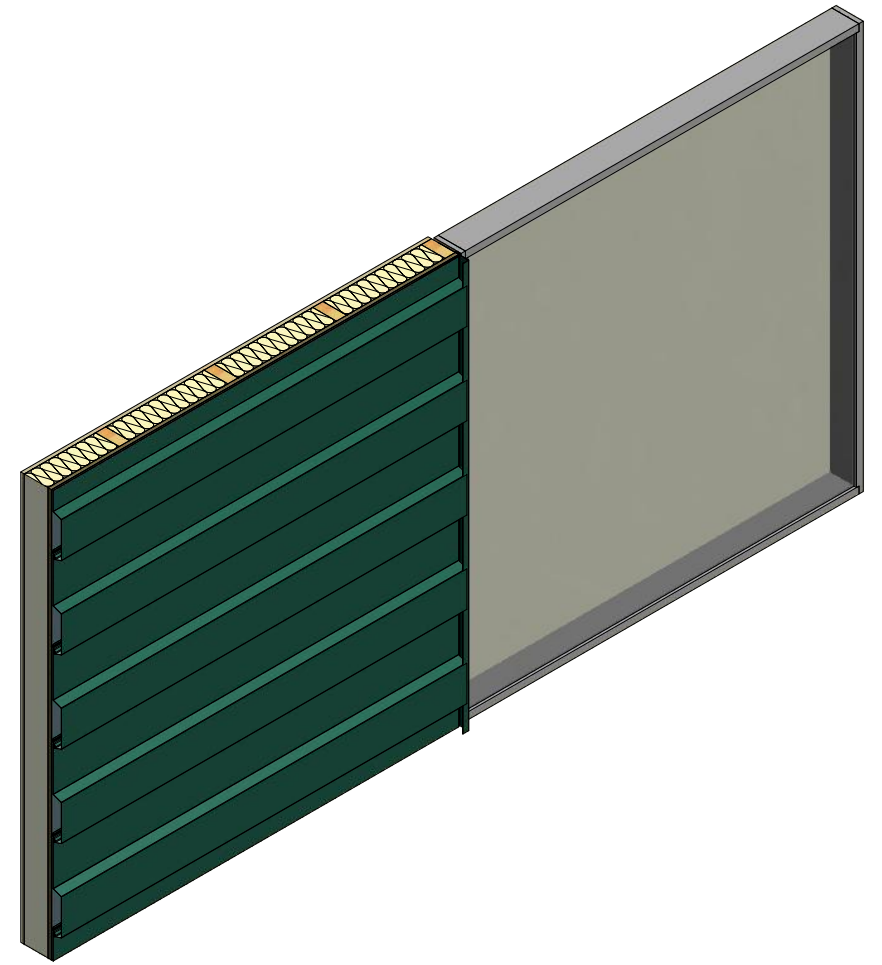
ATAS ATAS INTERNATIONAL, INC
 Allentown PA
 610-395-8445
 Mesa AZ
 480-558-7210

REV. NO.		DATE	DESCRIPTION OF REVISION	BY	APP	TITLE Multi Purpose Panel Window Sill Flange Detail	
DWG. NO.		DR	DATE	MBP	7/31/2018	APP	
MATERIAL		SH. SIZE	B	SCALE	X:X		

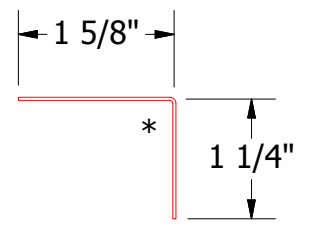
Horizontal Panel



- Interior Finish
- 1/2" Plywood (min.)
- Water and Air Resistive Barrier
- Membrane Strip
- #10 x 1" Wafer Head Screw
- Angle Trim
- J Channel
- Backer Rod and Sealant
- Window



MPA138 - J Channel



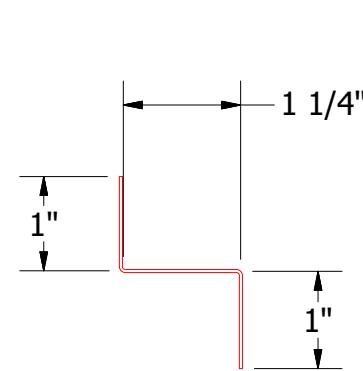
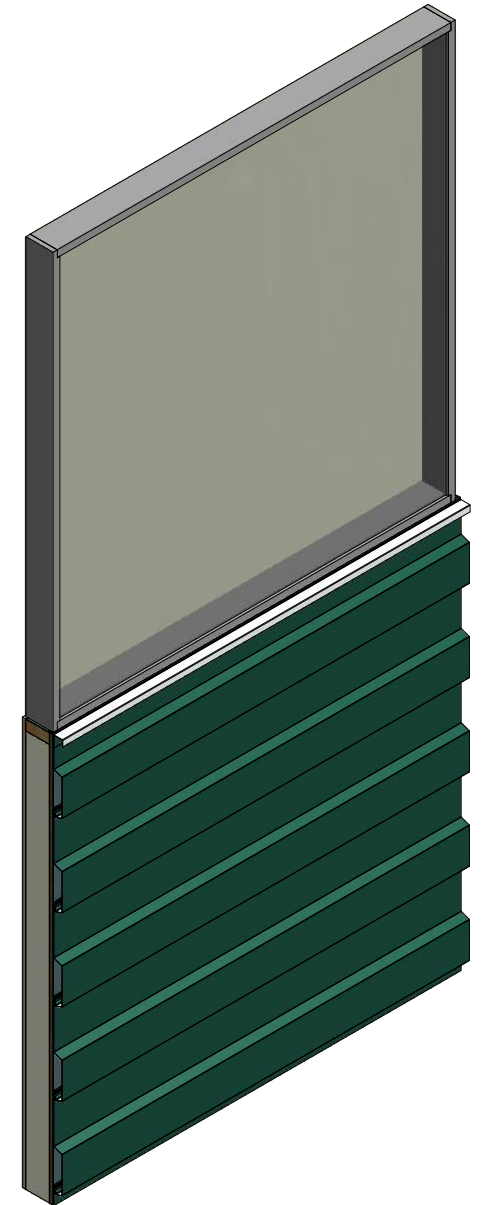
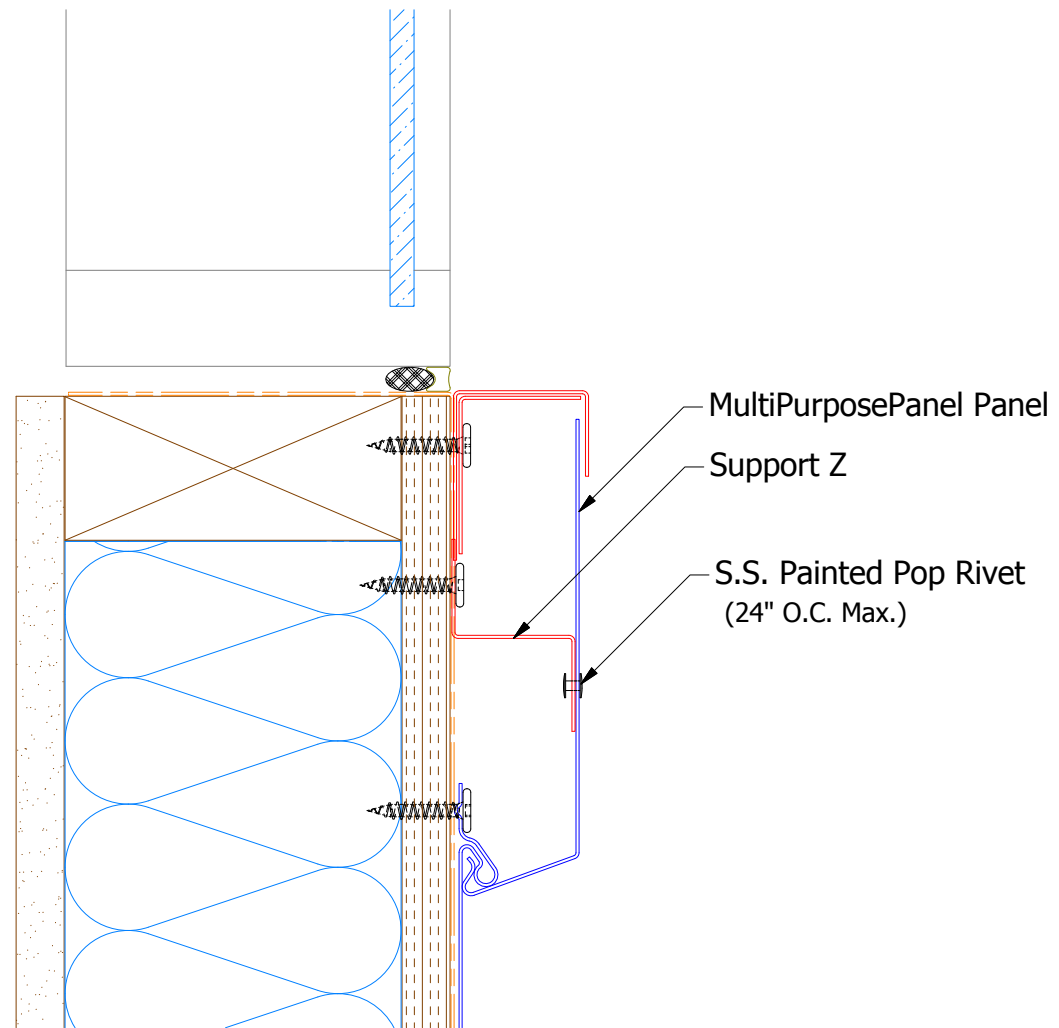
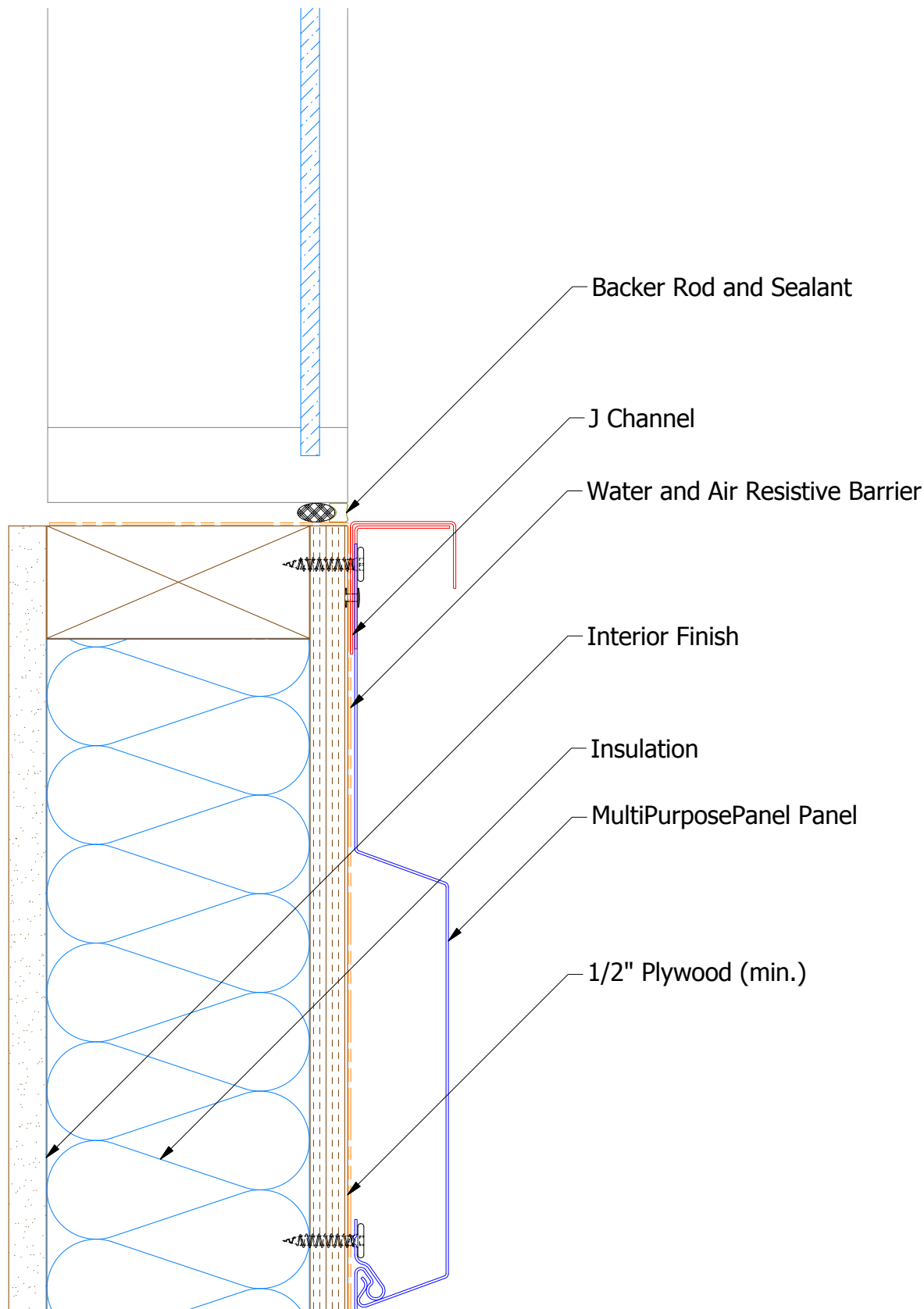
MPA680 - Angle Trim

Note: * denotes color side.

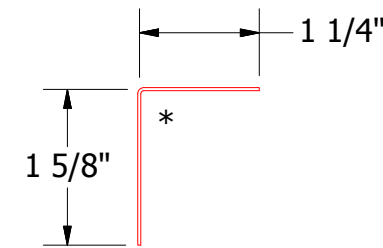
REV. NO.		DATE		DESCRIPTION OF REVISION		BY	APP
TITLE: MPP Jamb Existing Window Detail							
DWG. NO.				DR	MBP	DATE	7/19/18
MATERIAL				APP		DATE	
				SH. SIZE	B	SCALE	X:X


ATAS INTERNATIONAL, INC
 Allentown PA
 610-395-8445
 Mesa AZ
 480-558-7210

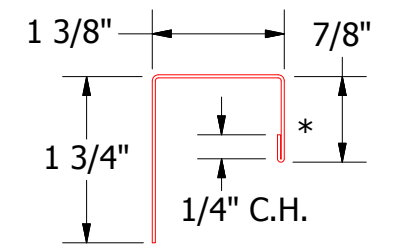
Horizontal Panel



MPA681 - Support Z



MPA280 - Angle Trim



MPA138 - J Channel

Note: * denotes color side.

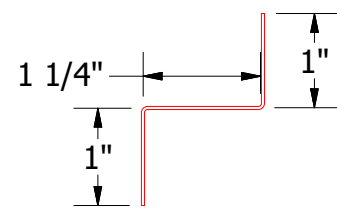
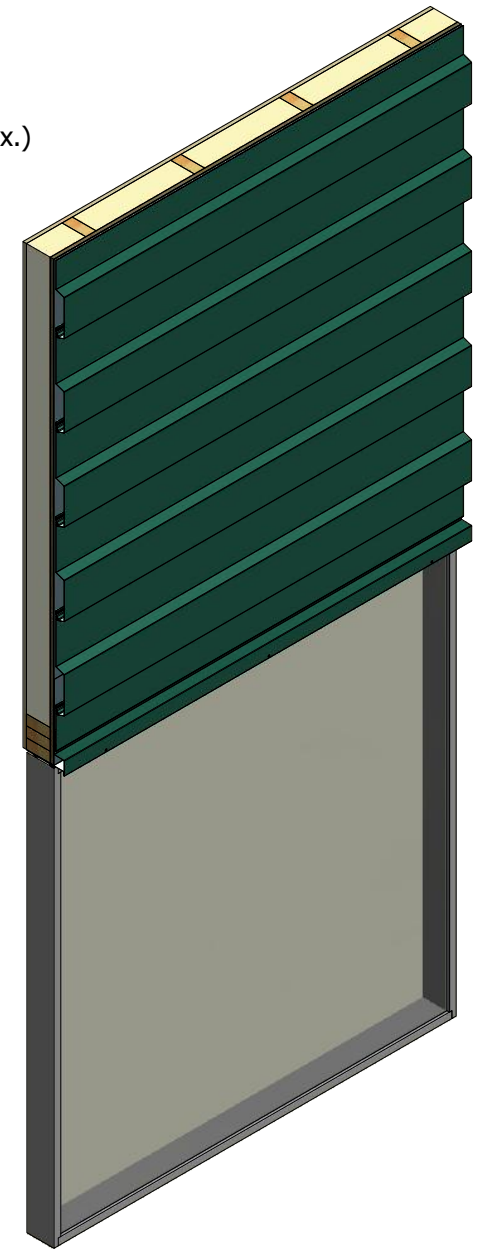
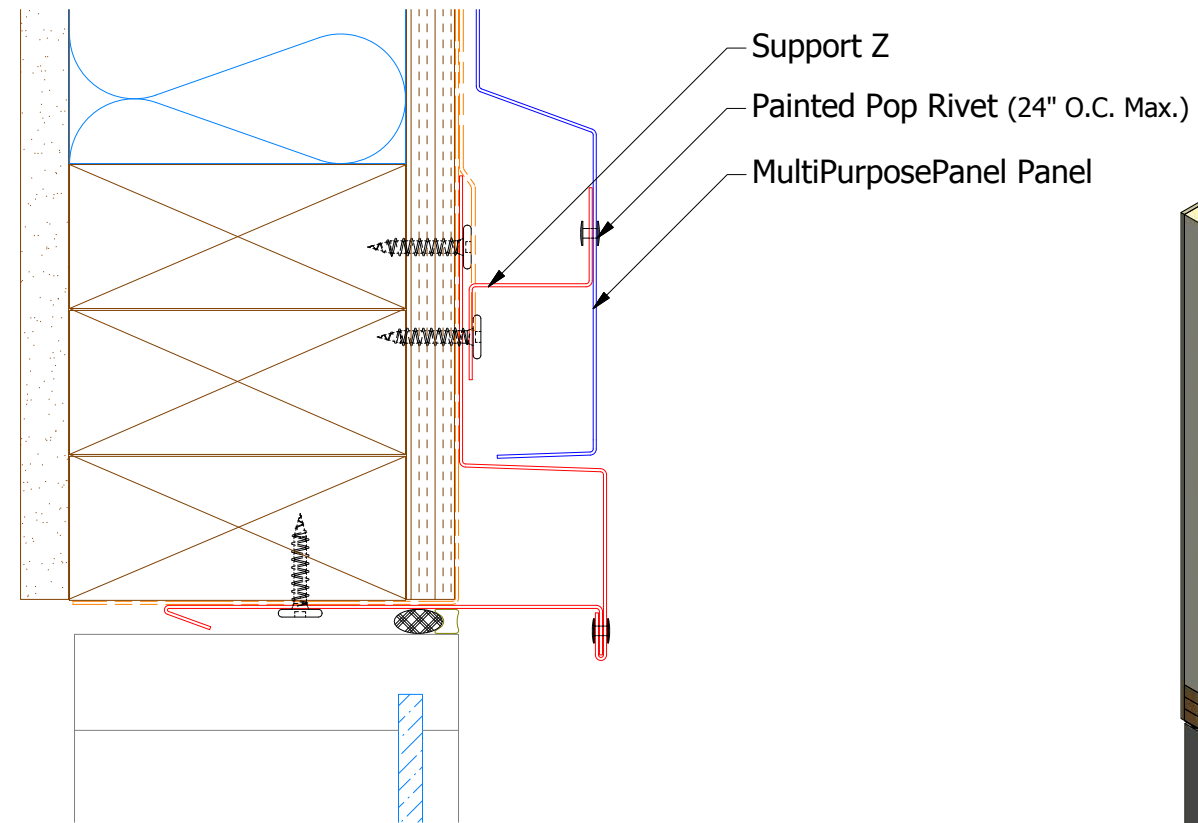
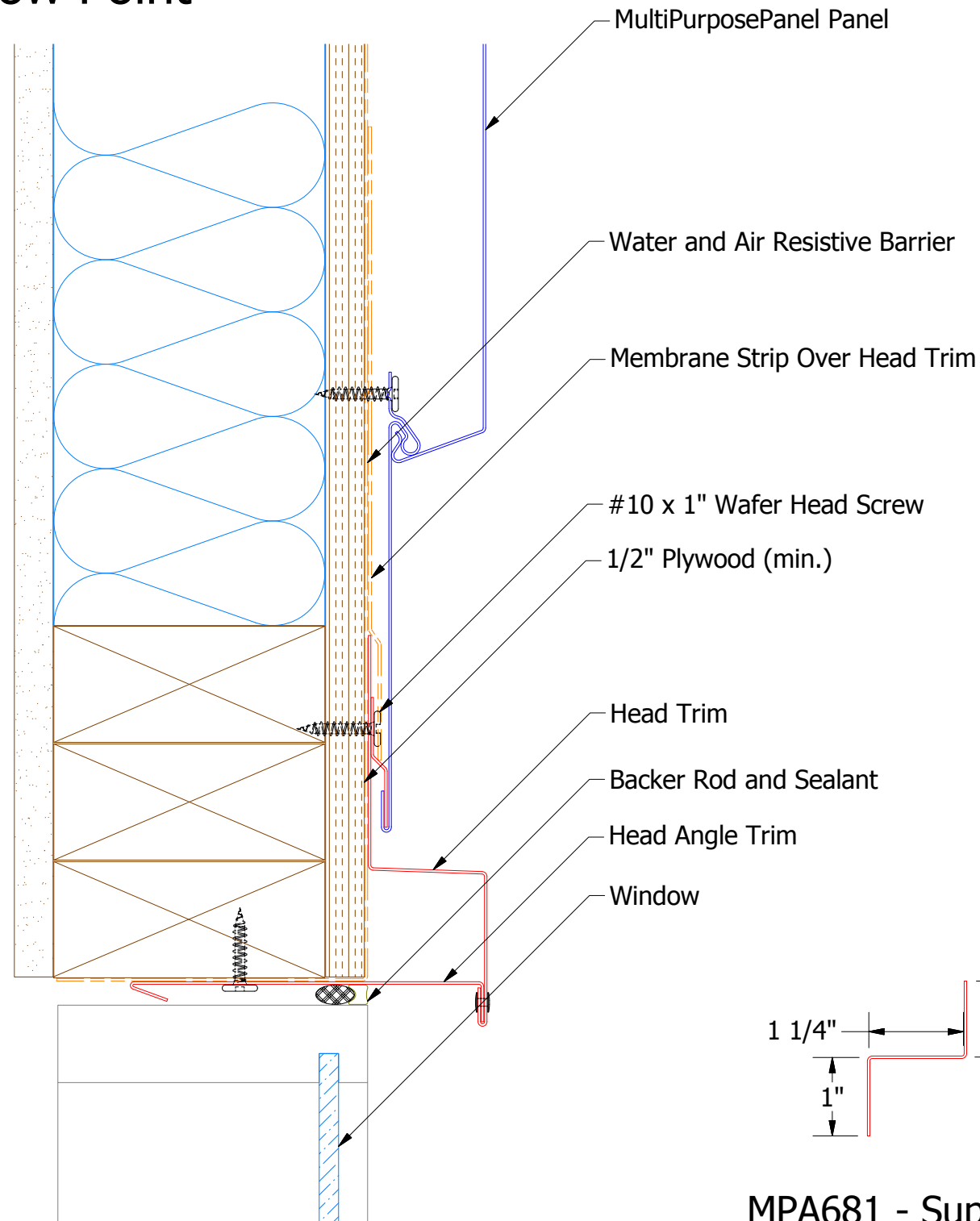
REV. NO.		DATE	DESCRIPTION OF REVISION	BY	APP
TITLE: MPP Window Sill Existing Window Detail					
DWG. NO.		DR	MBP	DATE	7/20/18
MATERIAL		APP		DATE	
SH. SIZE		B	SCALE	X:X	

ATAS ATAS INTERNATIONAL, INC
 Allentown PA
 610-395-8445
 Mesa AZ
 480-558-7210

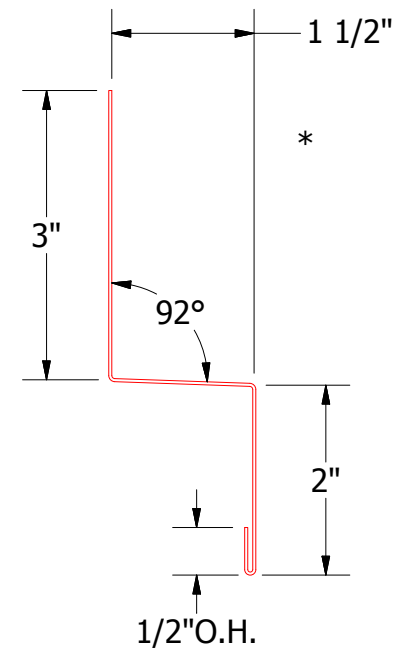
Horizontal Panel

Low Point

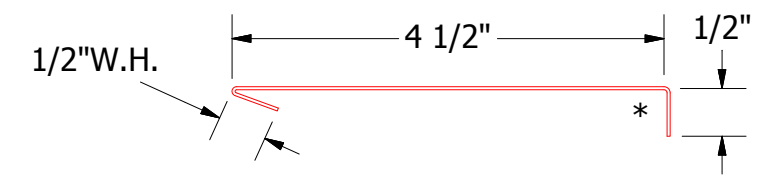
High Point



MPA681 - Support Z



MPA550 - Head Trim



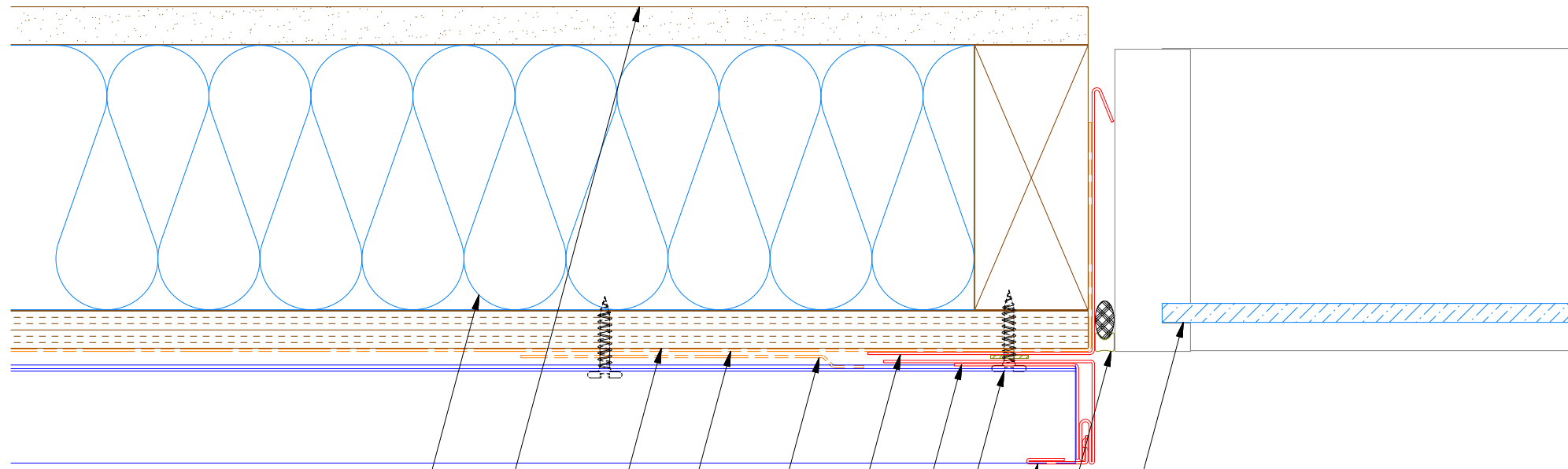
MPA690 - Head Angle Trim

ATAS ATAS INTERNATIONAL, INC
 Allentown PA
 610-395-8445
 Mesa AZ
 480-558-7210

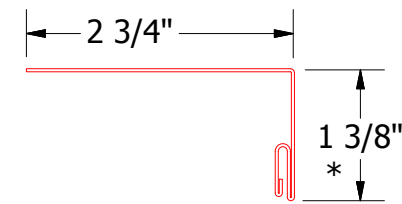
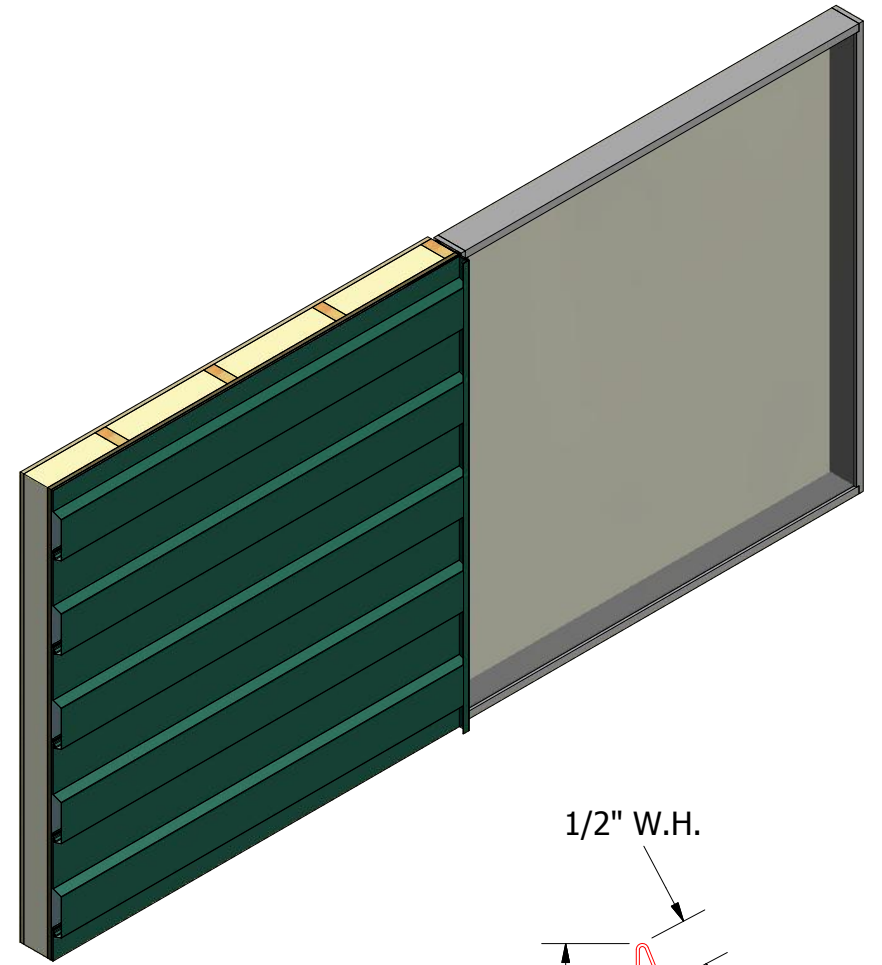
TITLE MultiPurposePanel Head Detail

REV. NO.	DATE	DESCRIPTION OF REVISION	BY	APP	DWG. NO.	DR MBP	DATE 7/12/2016
						APP DAS	DATE 7/29/16
					MATERIAL	SH. SIZE B	SCALE X:X

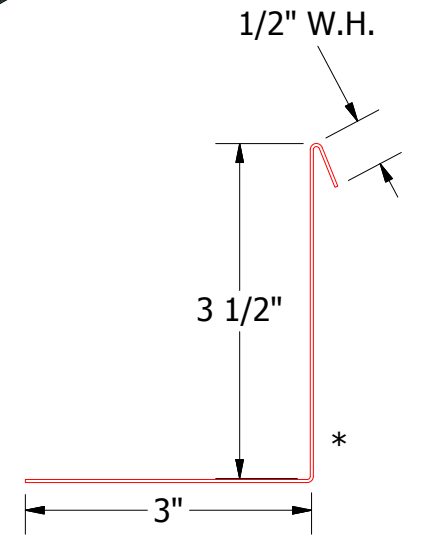
Horizontal Panel - Alternate



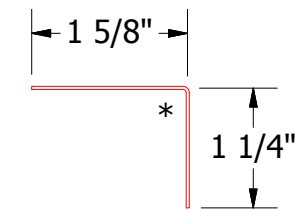
- Insulation
- Interior Finish
- 1/2" Plywood (min.)
- Water and Air Resistive Barrier
- Membrane Strip Over Snap J Channel
- Angle Trim With Return
- Angle Trim
- #10 x 1" Wafer Head Screw
- Snap J Channel
- Backer Rod and Sealant
- Window



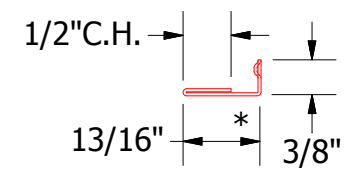
MPA139 - Snap J Base



MPA683 - Angle Trim With Return



MPA680 - Angle Trim



UNS078 - Snap J Cover

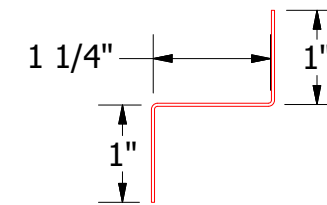
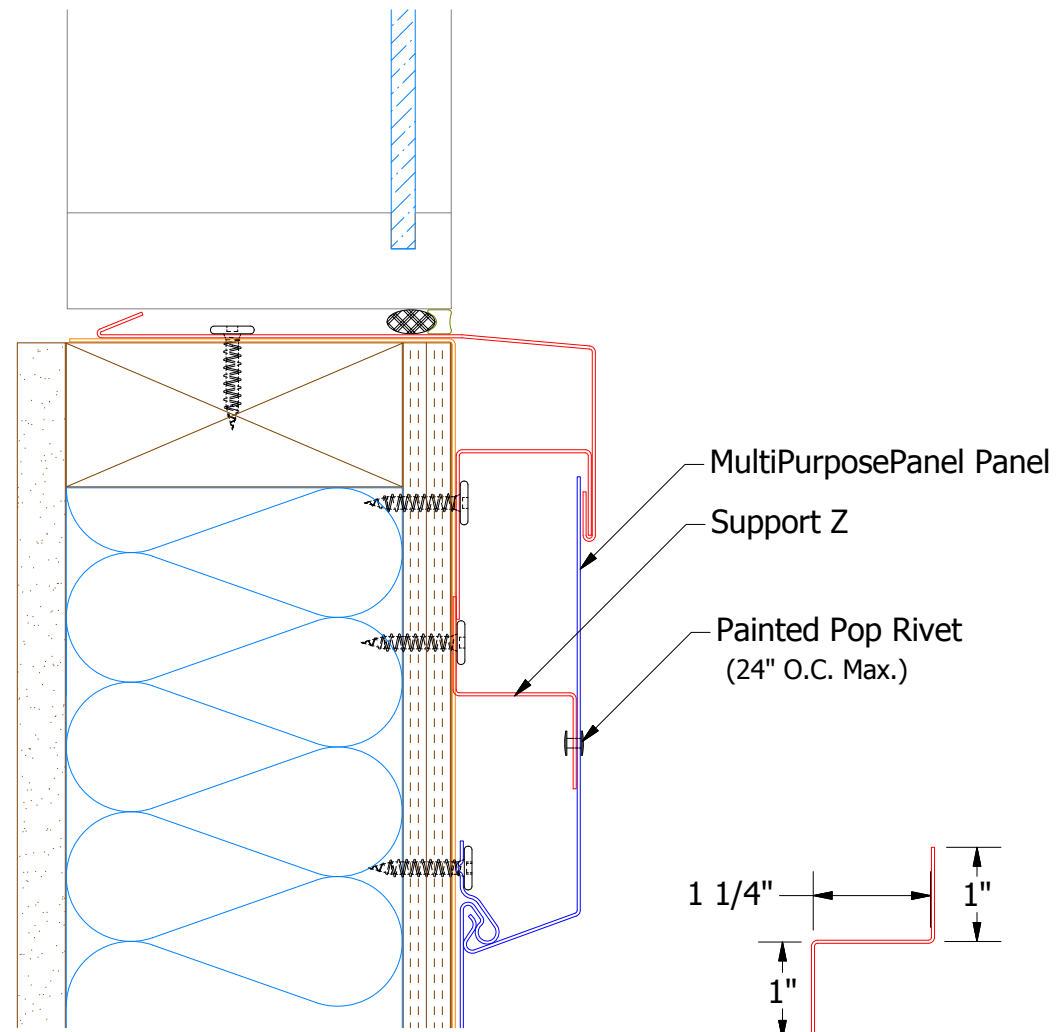
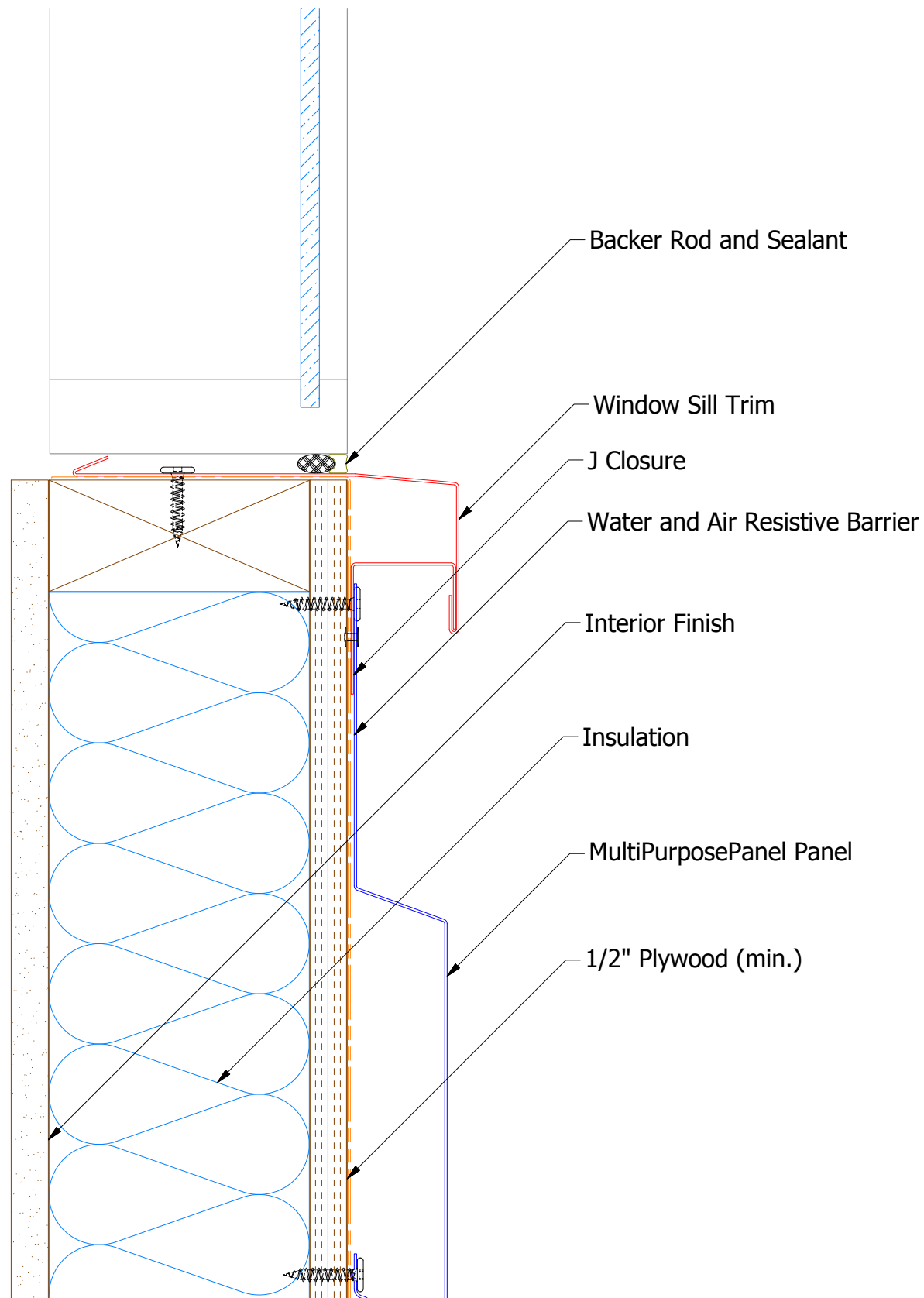
ATAS ATAS INTERNATIONAL, INC
 Allentown PA
 610-395-8445
 Mesa AZ
 480-558-7210

TITLE MultiPurposePanel Jamb Alt Detail

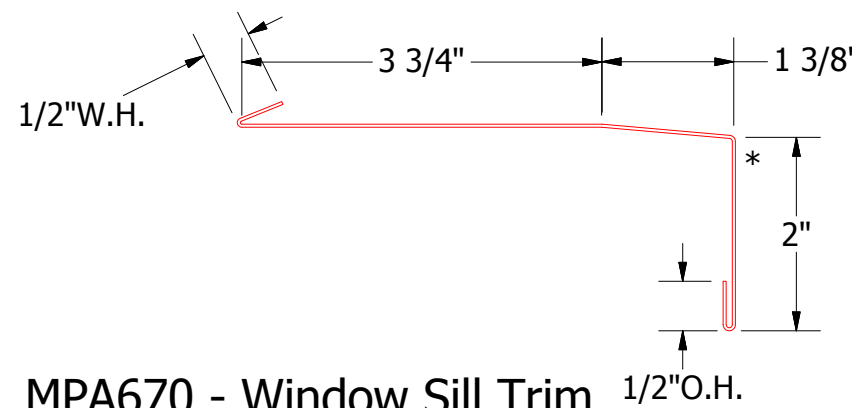
REV. NO.	DATE	DESCRIPTION OF REVISION	BY	APP	DWG. NO.	DR MBP	DATE 7/12/2016
						APP DAS	DATE 7/29/16
					MATERIAL	SH. SIZE B	SCALE X:X

Horizontal Panel Low Point

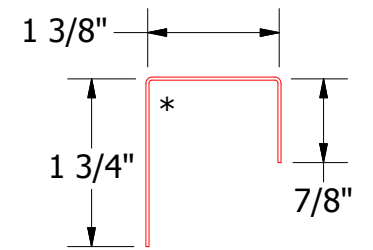
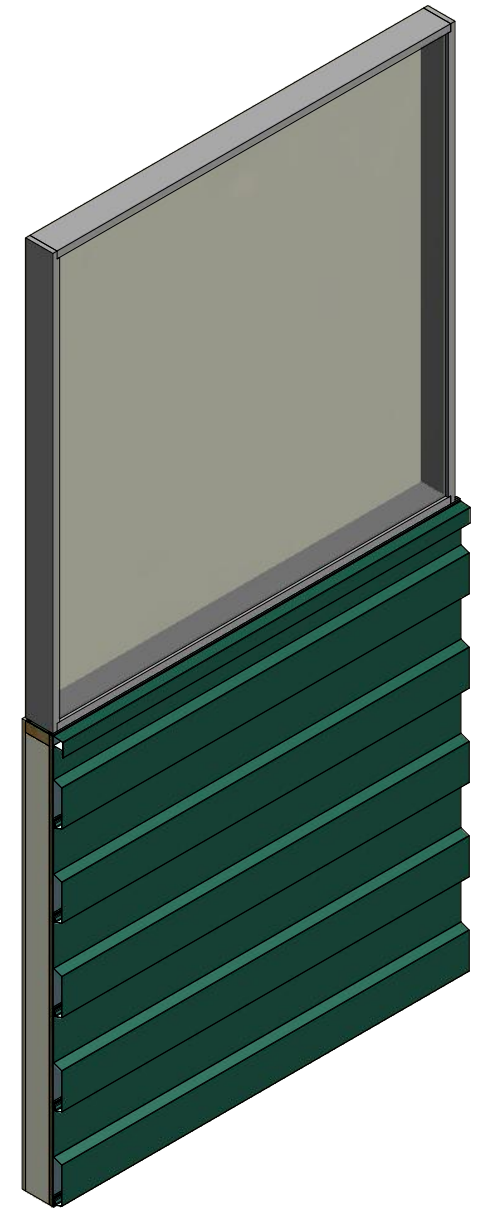
High Point



MPA681 - Support Z



MPA670 - Window Sill Trim



MPA270 - J Closure

ATAS ATAS INTERNATIONAL, INC
 Allentown PA
 610-395-8445
 Mesa AZ
 480-558-7210

TITLE **MultiPurposePanel Window Sill Detail**

REV. NO.	DATE	DESCRIPTION OF REVISION	BY	APP	DWG. NO.	DR	DATE
						MBP	7/13/2016
						DAS	7/29/16
					MATERIAL	SH. SIZE	SCALE
						B	X:X