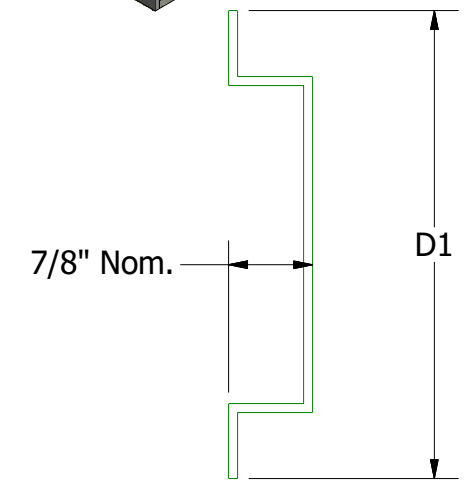
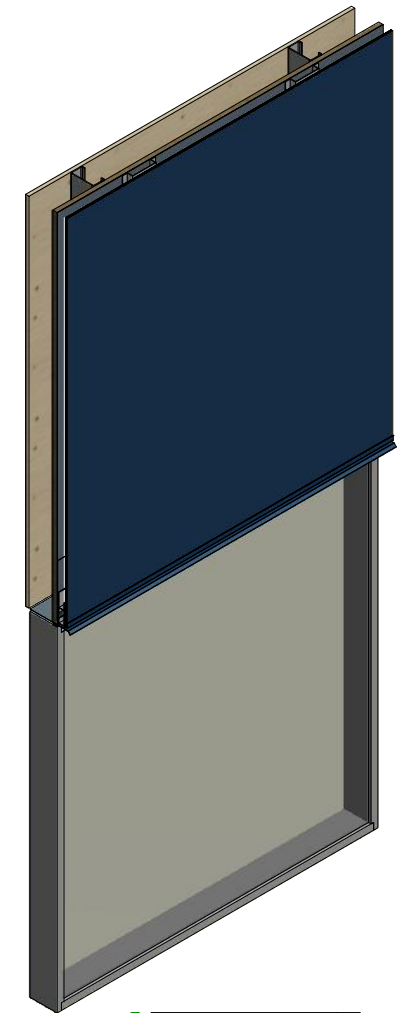
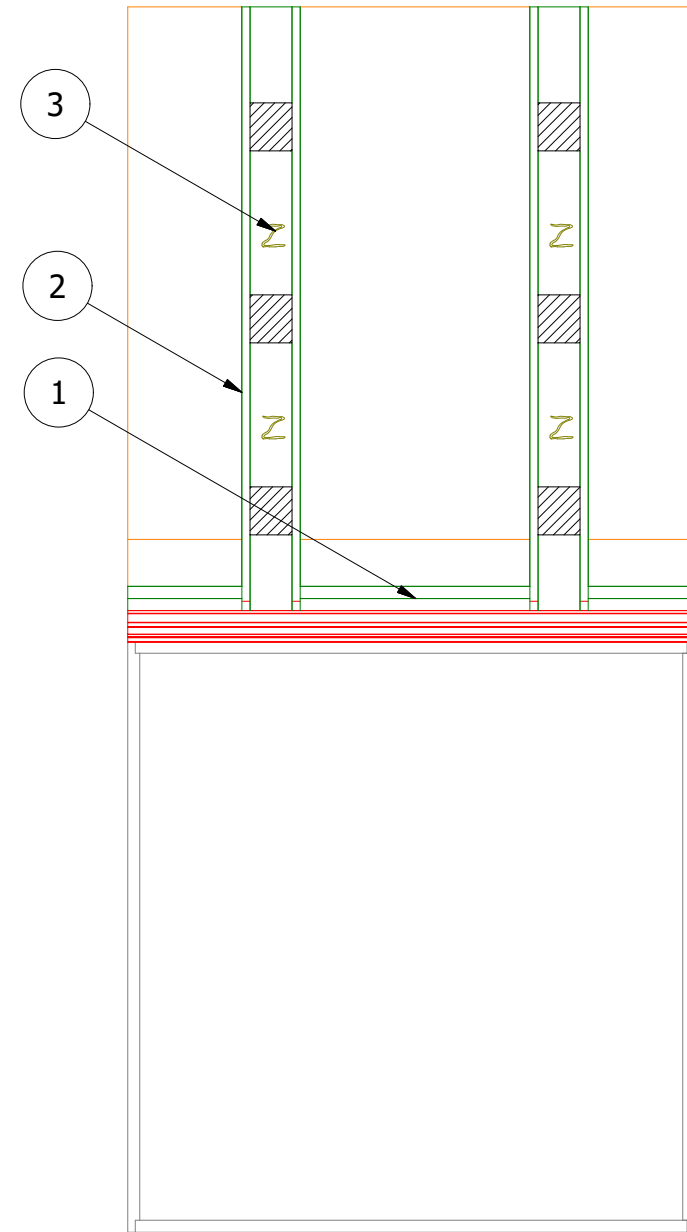
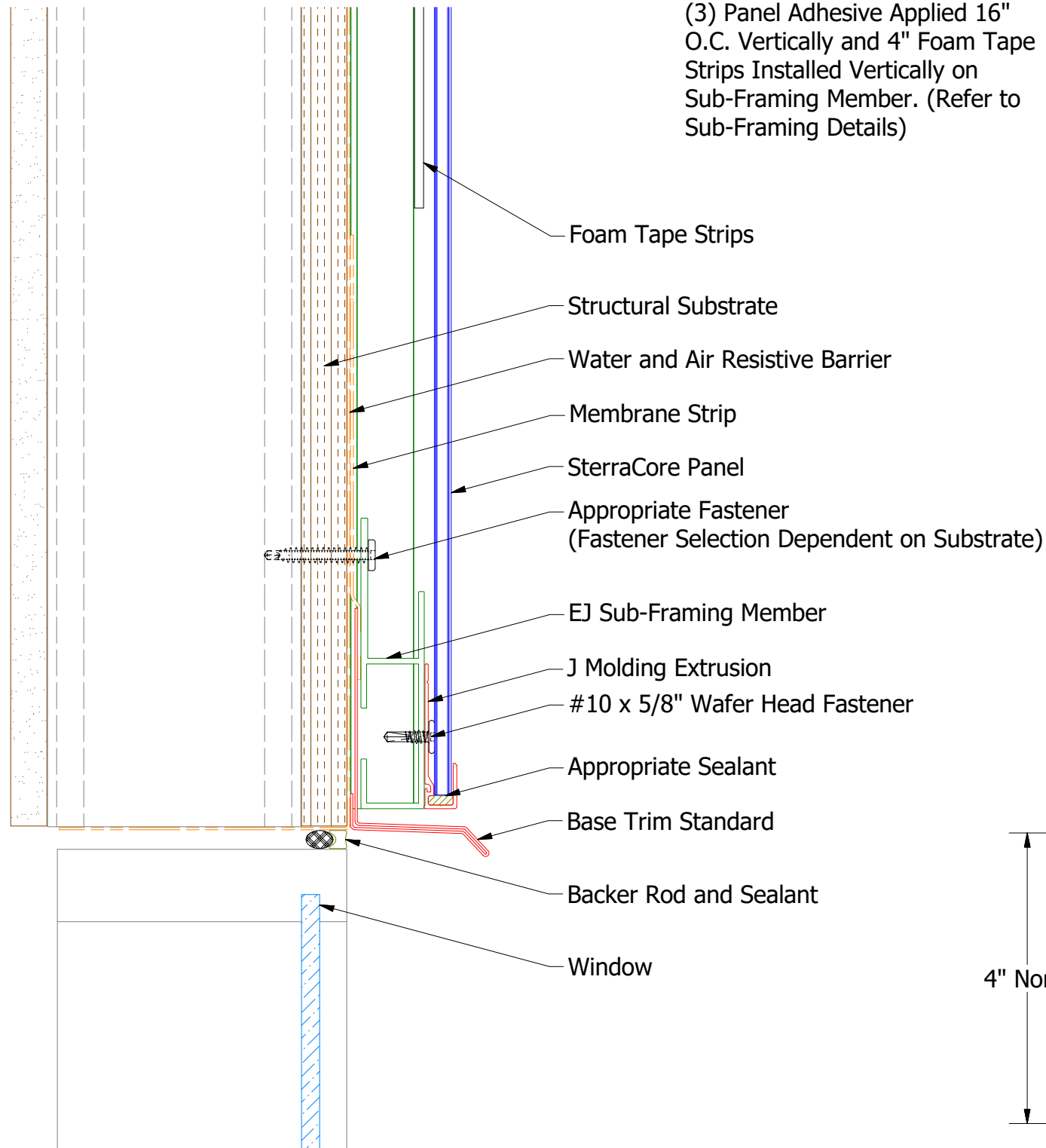


SterraCore Panel

(1) J Molding Extrusion Installed on EJ Sub-Framing Member

(2) Sub-Framing Member Installed 16" - 24" O.C.

(3) Panel Adhesive Applied 16" O.C. Vertically and 4" Foam Tape Strips Installed Vertically on Sub-Framing Member. (Refer to Sub-Framing Details)

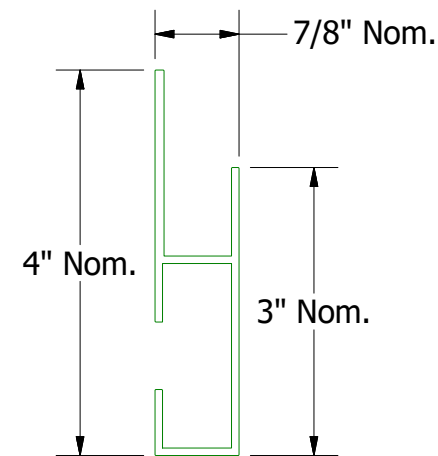


SH/ RH/ AH Sub-Framing Member

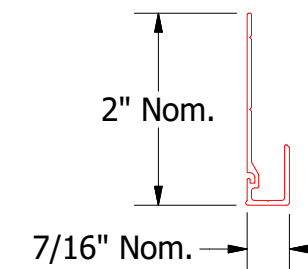
SH: D1 = 4 7/8"

RH: D1 = 6 3/8"

AH: D1 = 3 5/8"



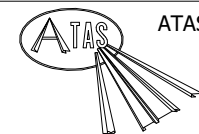
EJ Sub-Framing Member



J Molding Extrusion

Note: Spacing between Panels and Water and Air Resistive Barrier are shown for Clarity.

REV. NO.		DATE		DESCRIPTION OF REVISION		BY	APP
TITLE							
SterraCore Head Detail - 1 Piece							
DWG. NO.		DR		DATE		DATE	
		DMR		5/1/2020			
MATERIAL		APP		DATE			
SH. SIZE		B		SCALE		X:X	



ATAS INTERNATIONAL, INC
Allentown PA
610-395-8445
Mesa AZ
480-558-7210