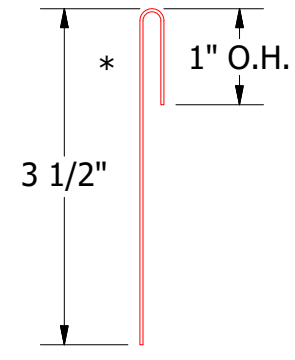
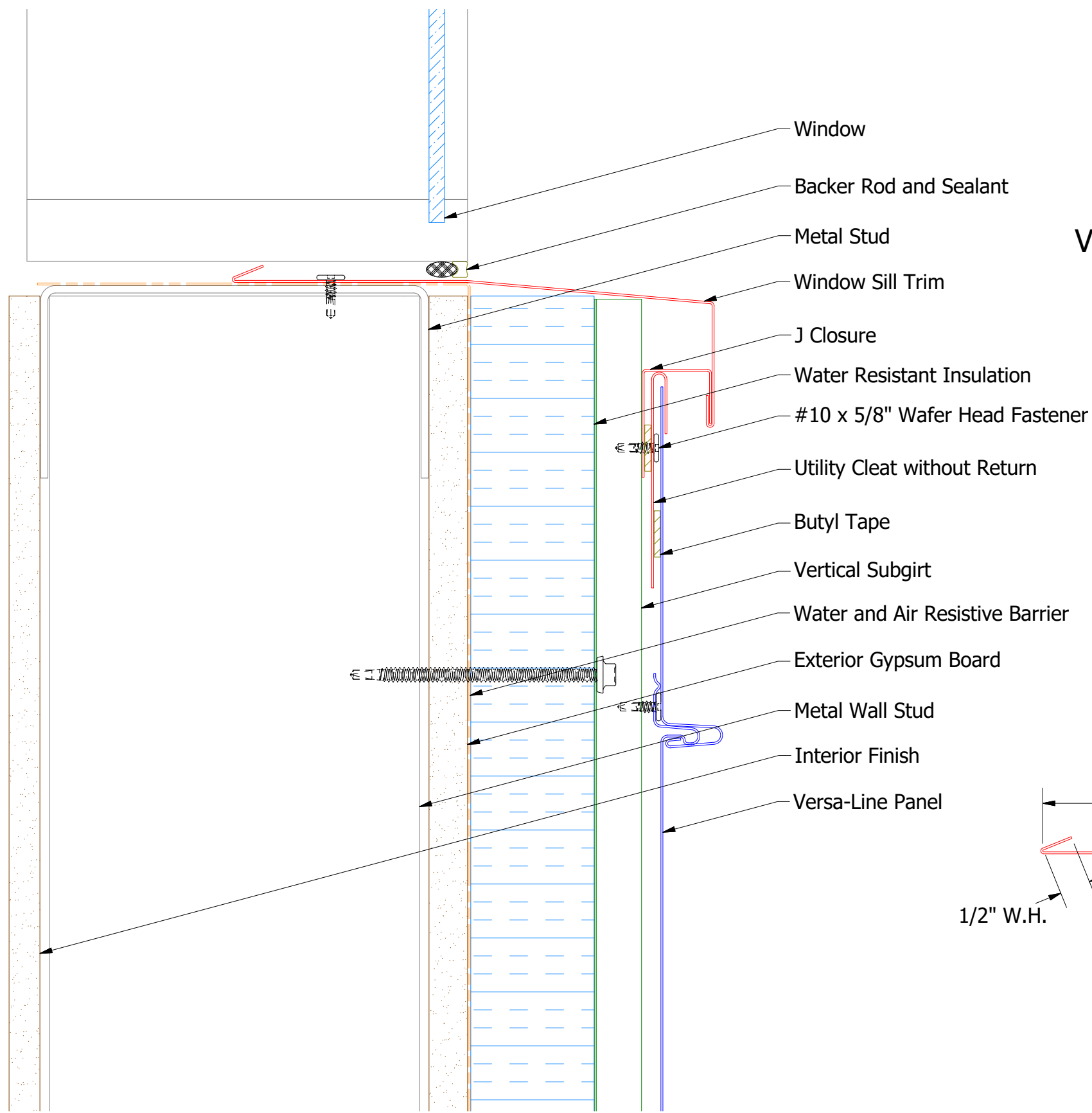
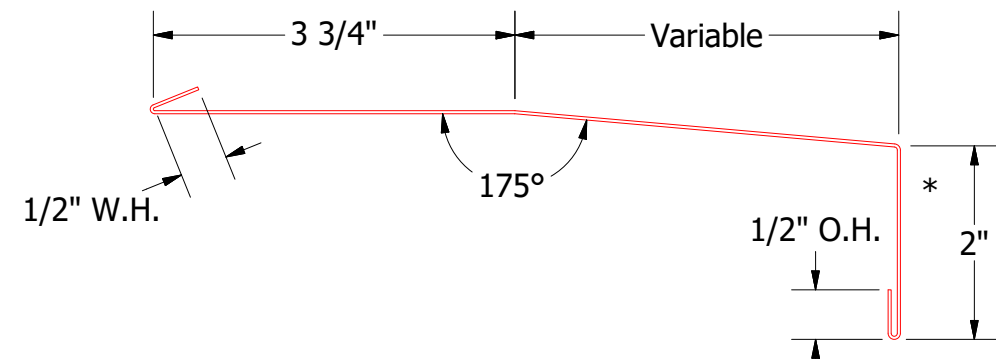
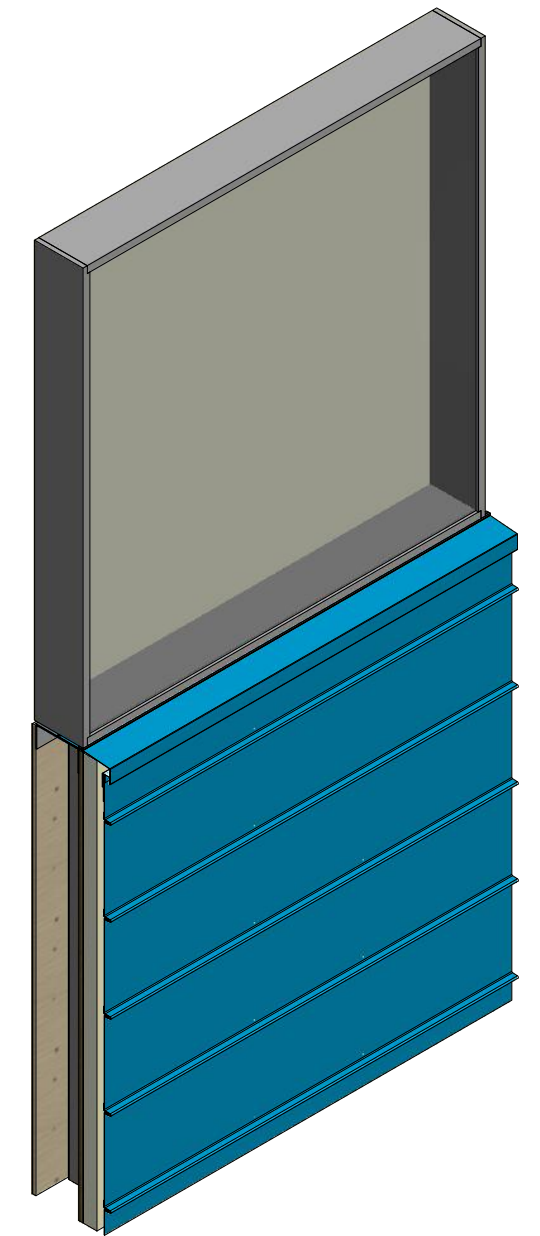


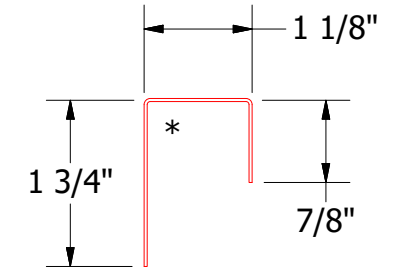
# Horizontal Panel



VSA962-Utility Cleat without Return



VSA670-Window Sill Trim



VSA270-J Closure

**ATAS** ATAS INTERNATIONAL, INC  
 Allentown PA  
 610-395-8445  
 Mesa AZ  
 480-558-7210

TITLE  
**Versa-Line Open Window Sill Detail**

REV. NO.	DATE	DESCRIPTION OF REVISION	BY	APP	DWG. NO.	DR	DATE
						DMR	1/27/2017
					MATERIAL	APP	DATE
					SH. SIZE	B	SCALE
							X:X