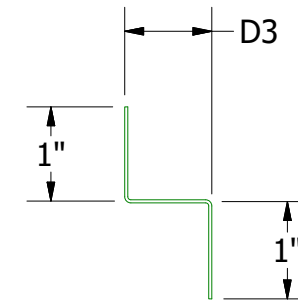
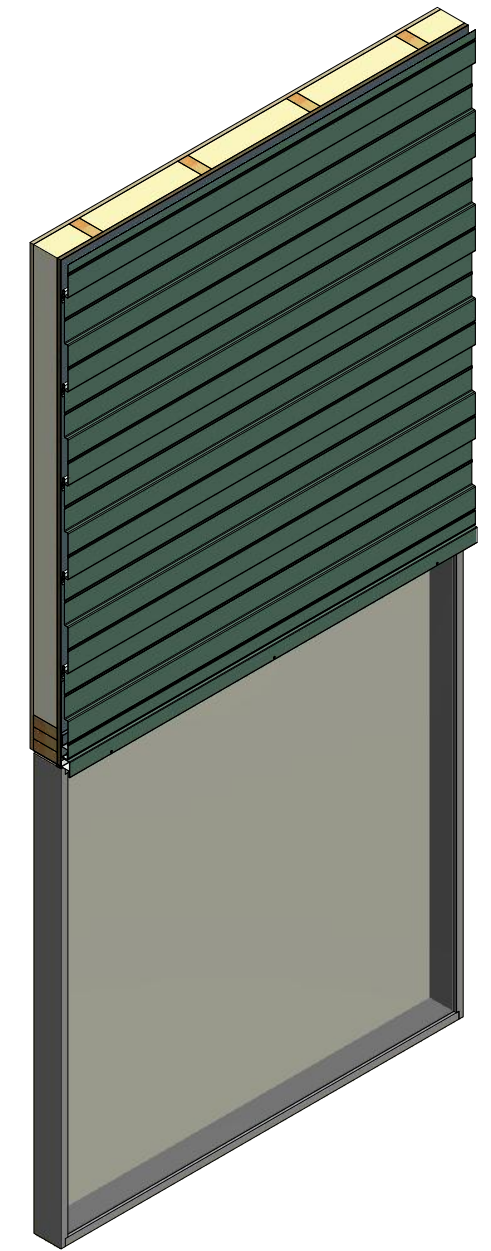
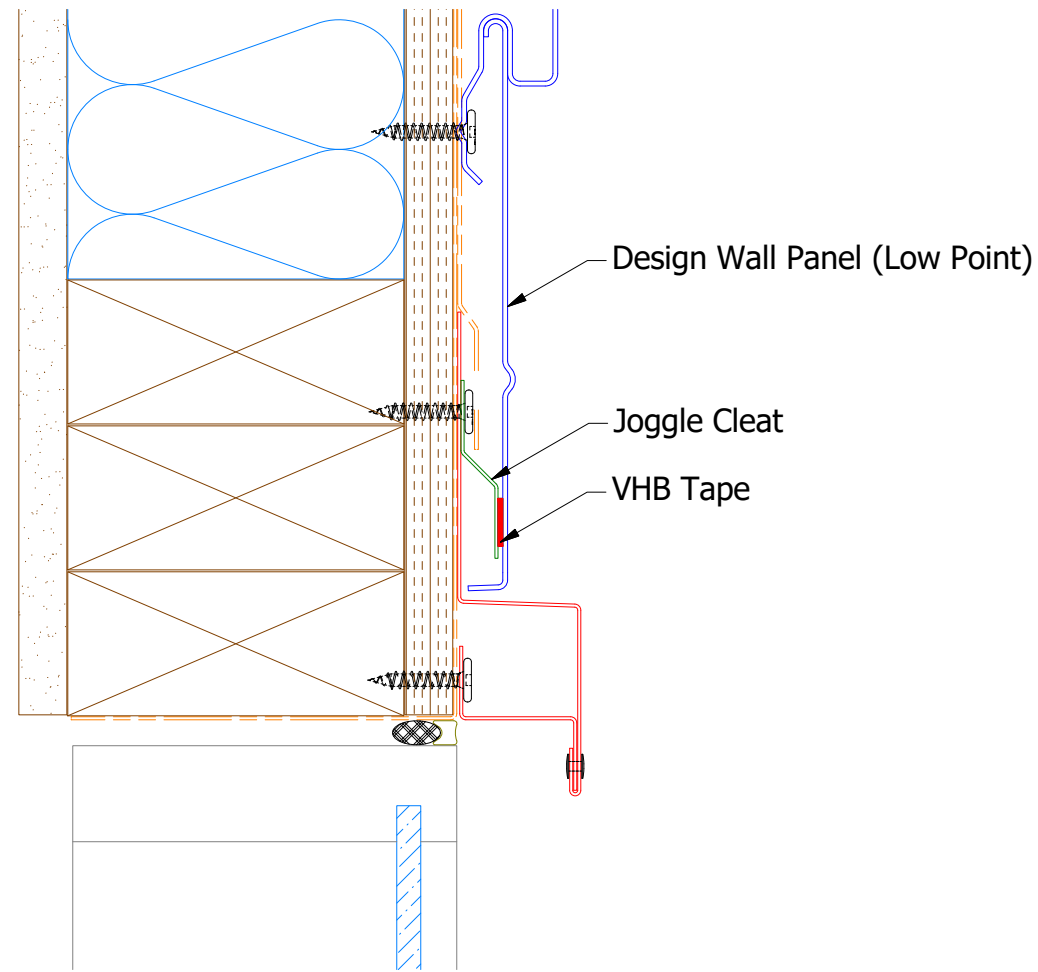
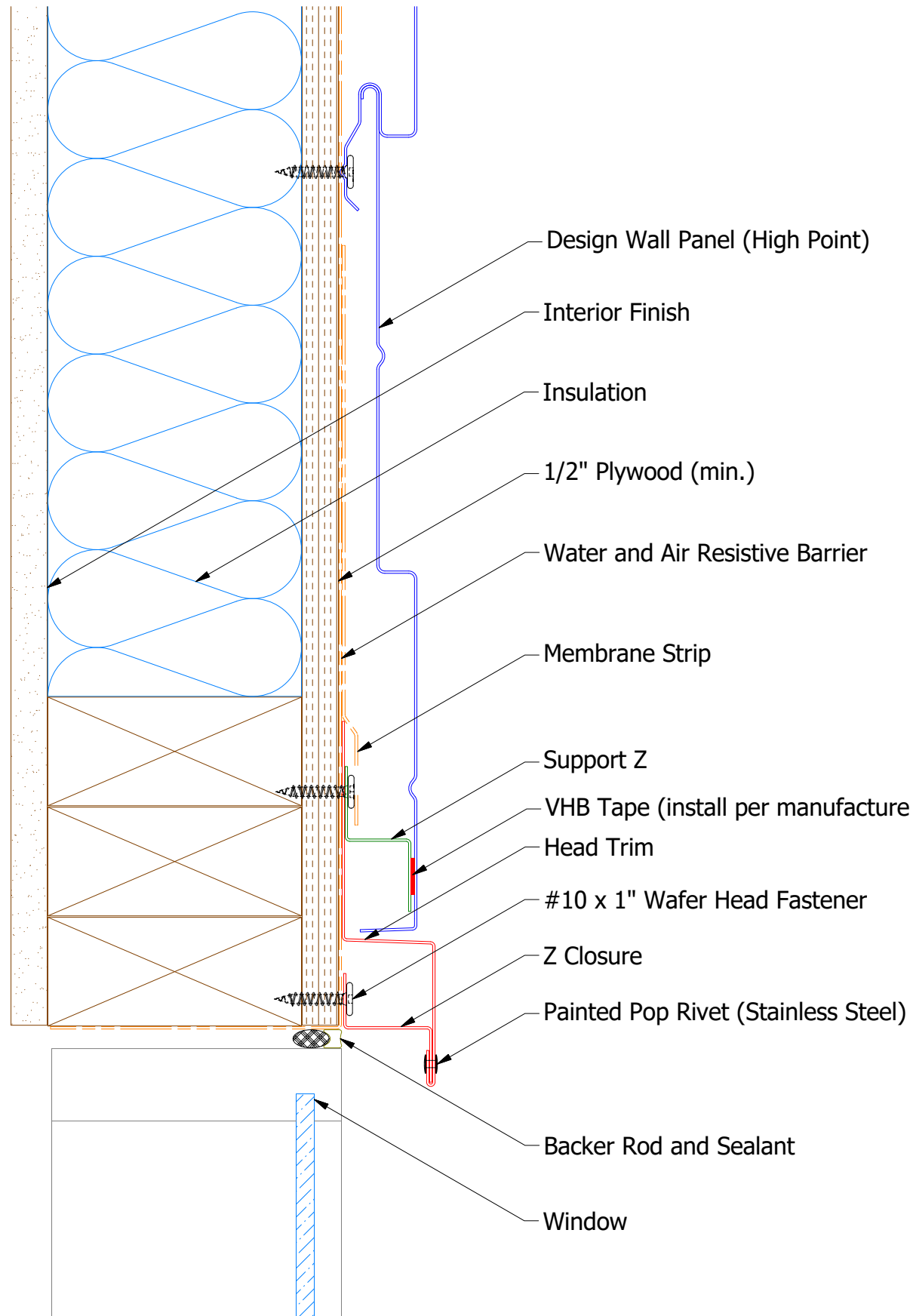
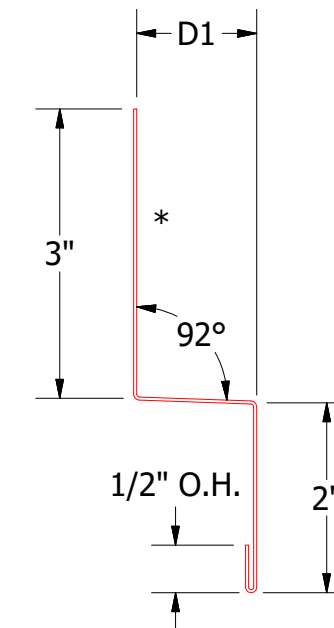


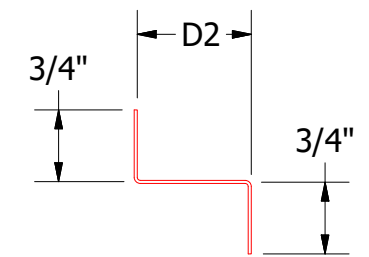
# Horizontal Panel



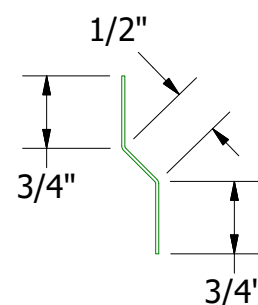
**Support Z**  
DWA681: D3=1"  
DSA681: D3=1 5/8"



**Head Trim**  
DWA550: D1=1 1/4"  
DSA550: D1=2"



**Z Closure**  
D2=1 3/16"  
D2=1 15/16"



**DSA975/ DWA975 - Joggle Cleat**

**Note:** \* denotes color side.  
**Note:** stainless steel pop rivets maybe needed along with VHB tape for longer panels.

		<b>ATAS INTERNATIONAL, INC</b> Allentown PA 610-395-8445 Mesa AZ 480-558-7210	
		TITLE <b>Design Wall Existing Head Detail</b>	
DWG. NO.	DR	DATE	DATE
	DMR	7/16/2018	
MATERIAL	APP	DATE	
	SH. SIZE	B	SCALE X:X

REV. NO.	DATE	DESCRIPTION OF REVISION	BY	APP
1	7/16/2021	Changed Pop Rivets to VHB Tape	DMR	