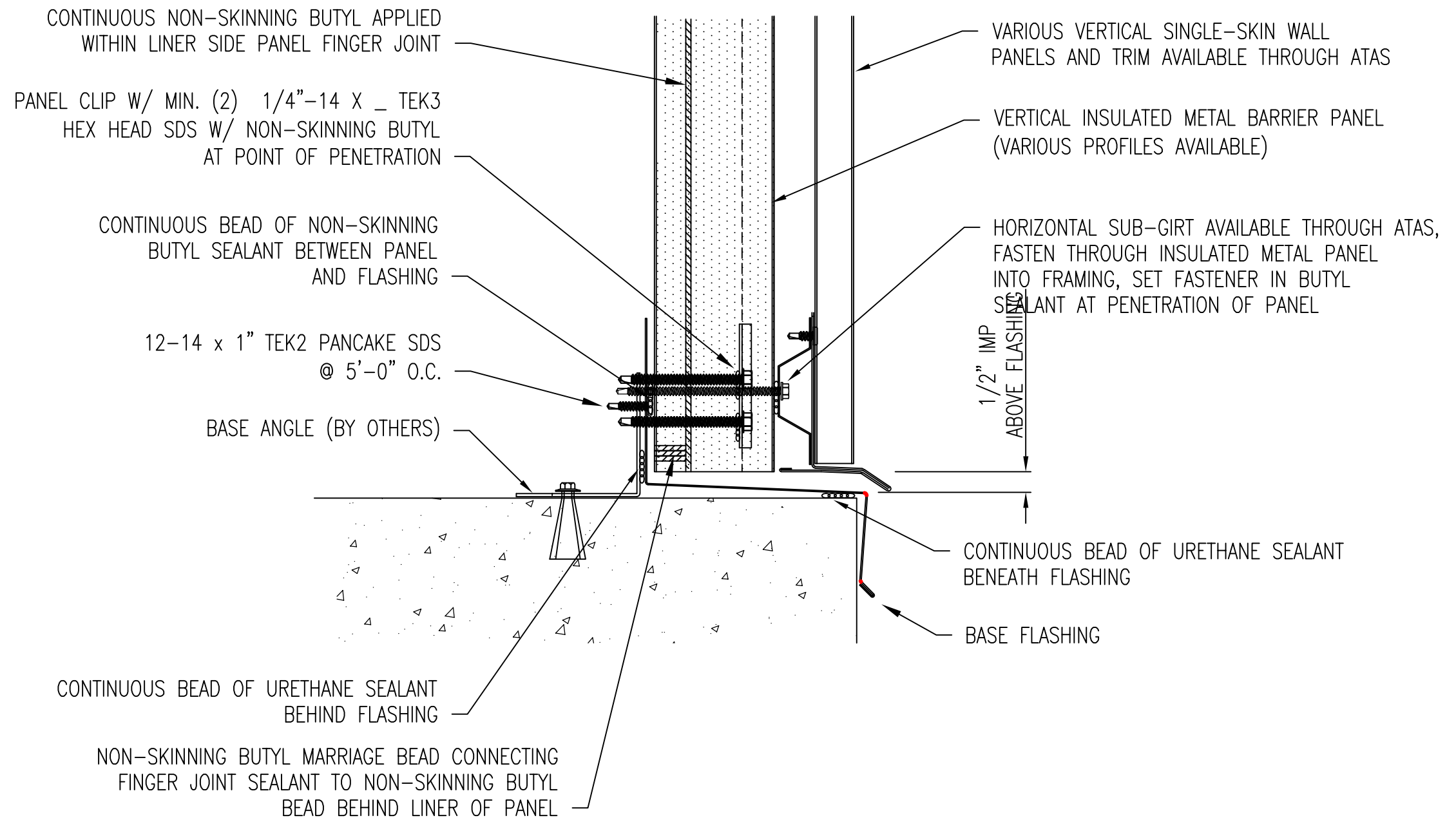


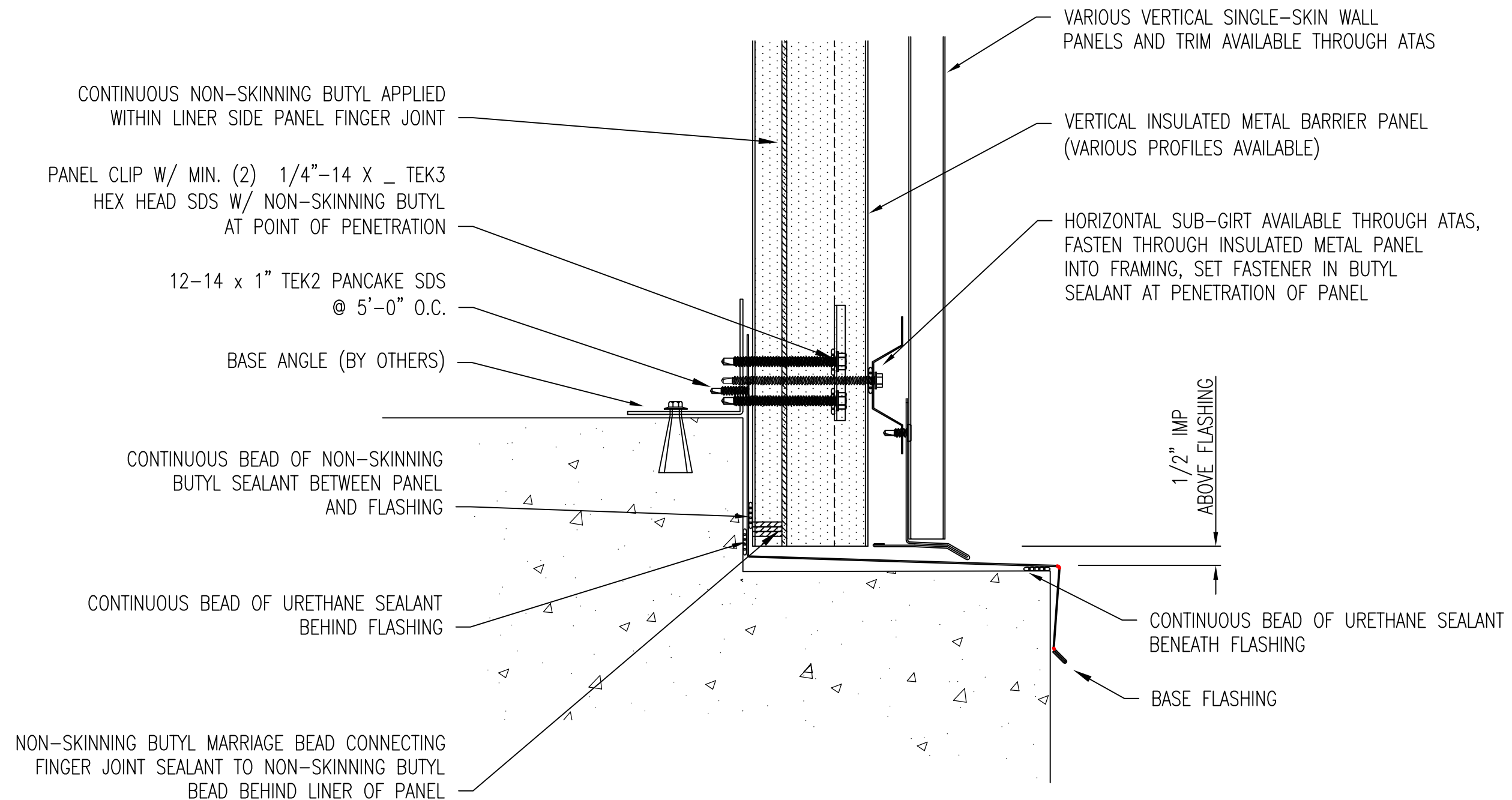
\*\* DETAIL SHOWN IS SUBJECT TO CHANGE WITHOUT NOTICE.

					TITLE		Vertical Barrier Wall-Base Flashing	
					DWG. NO.		DR	DATE
					MATERIAL		APP	DATE
REV. NO.	DATE	DESCRIPTION OF REVISION	BY	APP			SH. SIZE	SCALE
								X:X



\*\* DETAIL SHOWN IS SUBJECT TO CHANGE WITHOUT NOTICE.

					TITLE Vertical Barrier Wall-Base Flush				
					DWG. NO.			DR	DATE
								APP	DATE
					MATERIAL			SH. SIZE	SCALE
REV. NO.	DATE	DESCRIPTION OF REVISION		BY	APP				X:X



\*\* DETAIL SHOWN IS SUBJECT TO CHANGE WITHOUT NOTICE.

						TITLE		Vertical Barrier Wall-Base Notched	
						DWG. NO.		DR	DATE
								APP	DATE
						MATERIAL		SH. SIZE	SCALE
REV. NO.	DATE	DESCRIPTION OF REVISION			BY	APP			X:X

PANEL CLIP W/ MIN. (2) 1/4"-14 X \_ TEK3  
 HEX HEAD SDS W/ NON-SKINNING BUTYL  
 AT POINT OF PENETRATION

NON-SKINNING BUTYL MARRIAGE  
 BEAD CONNECTING  
 FINGER JOINT SEALANT TO  
 NON-SKINNING BUTYL BEAD  
 BEHIND LINER OF PANEL

12-14 x 1" TEK2 PANCAKE SDS  
 @ 5'-0" O.C.

HORIZONTAL FRAMING (BY OTHERS)

CONTINUOUS NON-SKINNING BUTYL SEALANT  
 BETWEEN PANEL AND FLASHING -AND-  
 BETWEEN FLASHING AND FRAMING

BACKER ROD AND SEALANT  
 (BY OTHERS)

VERTICAL INSULATED METAL BARRIER PANEL  
 (VARIOUS PROFILES AVAILABLE)

VARIOUS VERTICAL SINGLE-SKIN WALL  
 PANELS AND TRIM AVAILABLE THROUGH ATAS

HORIZONTAL SUB-GIRT AVAILABLE THROUGH ATAS,  
 FASTEN THROUGH INSULATED METAL PANEL  
 INTO FRAMING, SET FASTENER IN BUTYL  
 SEALANT AT PENETRATION OF PANEL

1/2" IMP  
 ABOVE FLASHING

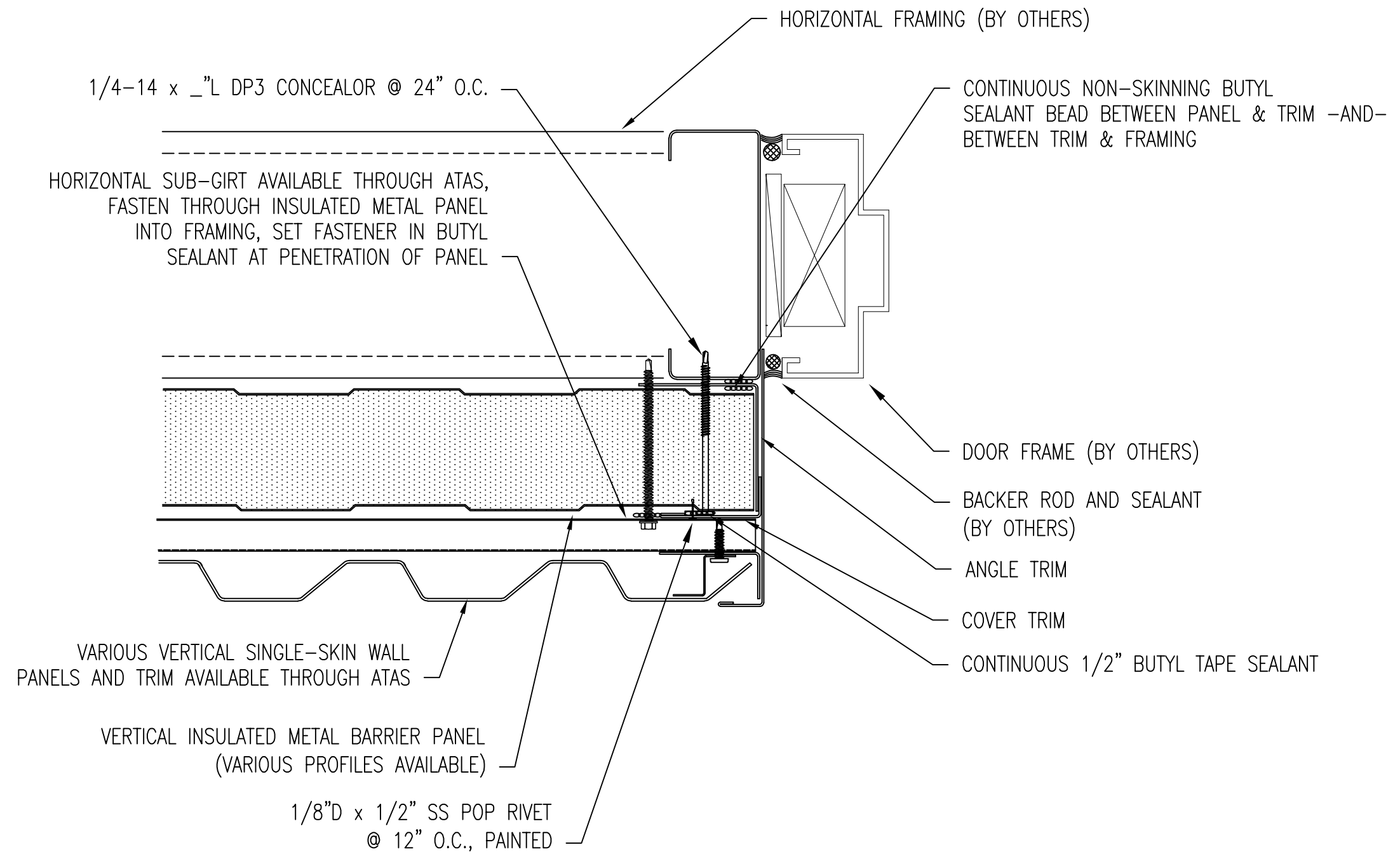
HEAD FLASHING

BACKER ROD AND SEALANT  
 (BY OTHERS)

DOOR FRAME (BY OTHERS)

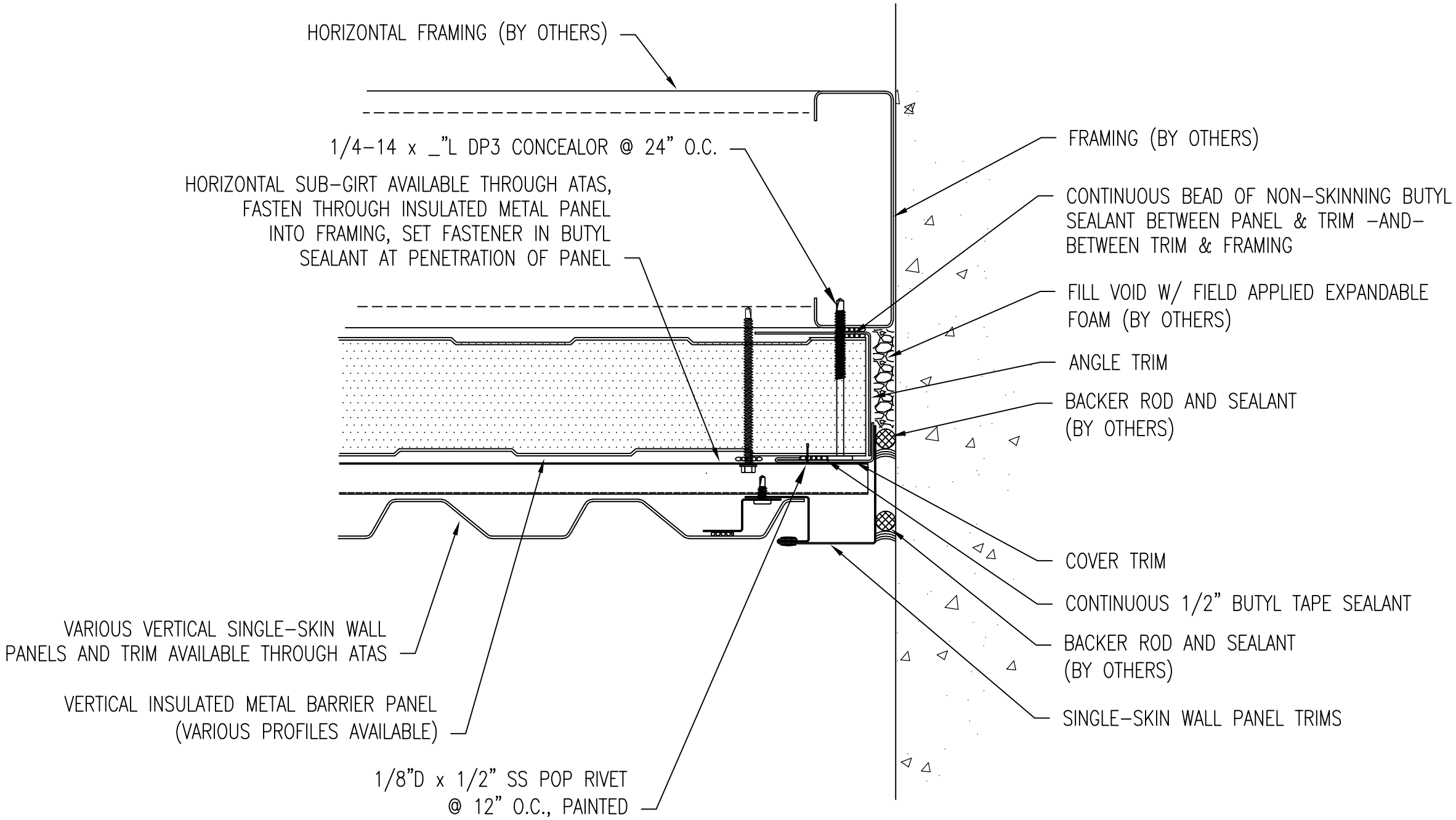
\*\* DETAIL SHOWN IS SUBJECT TO CHANGE WITHOUT NOTICE.

					<div> <b>ATAS INTERNATIONAL, INC</b> Allentown PA 610-395-8445 Mesa AZ 480-558-7210</div>			
					TITLE Vertical Barrier Wall- Door Head			
					DWG. NO.		DR	DATE
							APP	DATE
					MATERIAL		SH. SIZE	SCALE
REV. NO.	DATE	DESCRIPTION OF REVISION	BY	APP	X:X			



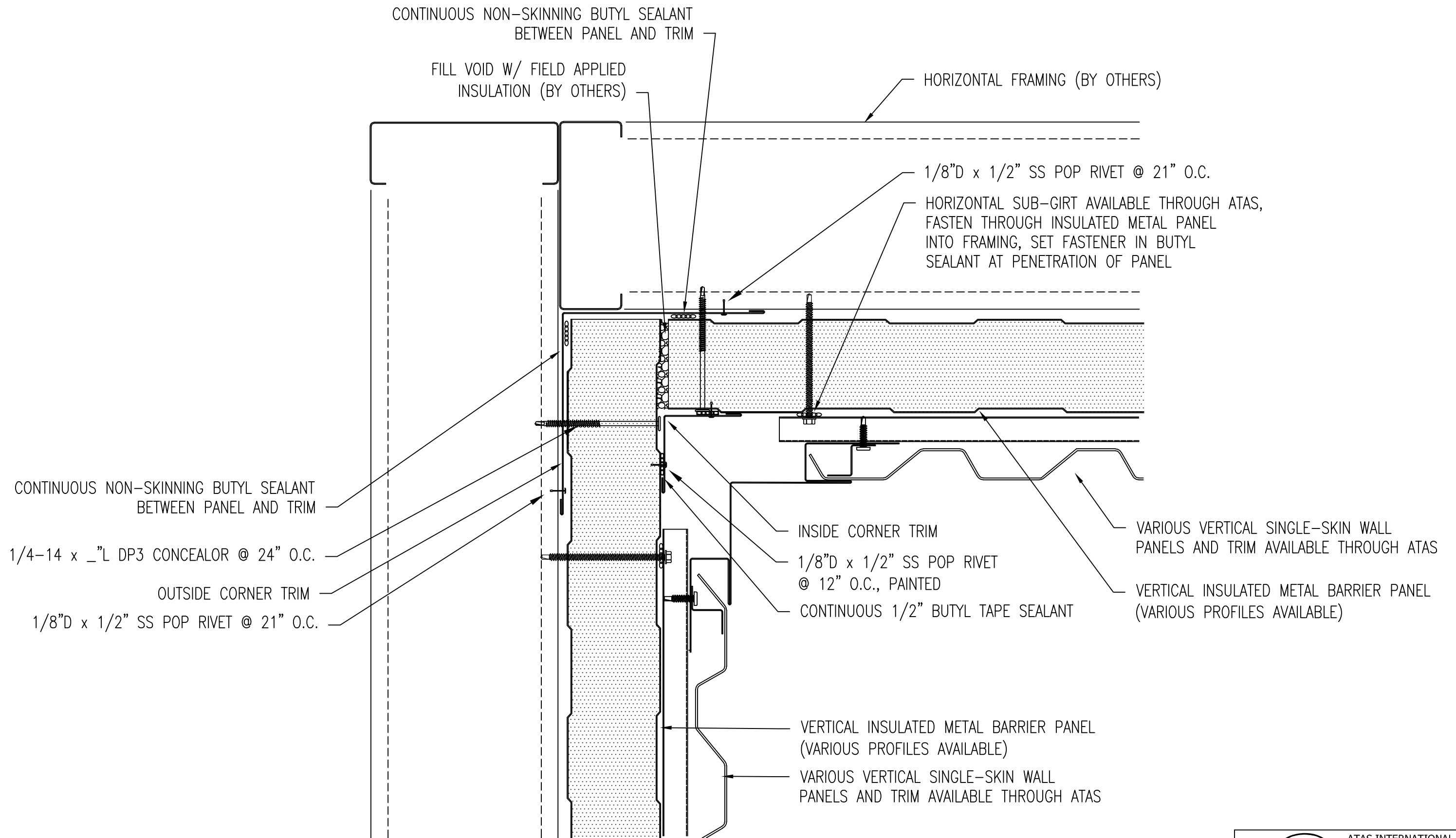
\*\* DETAIL SHOWN IS SUBJECT TO CHANGE WITHOUT NOTICE.

					Vertical Barrier Wall- Door Jamb			
					DWG. NO.		DR	DATE
							APP	DATE
					MATERIAL		SH. SIZE	SCALE
REV. NO.	DATE	DESCRIPTION OF REVISION			BY	APP		X:X



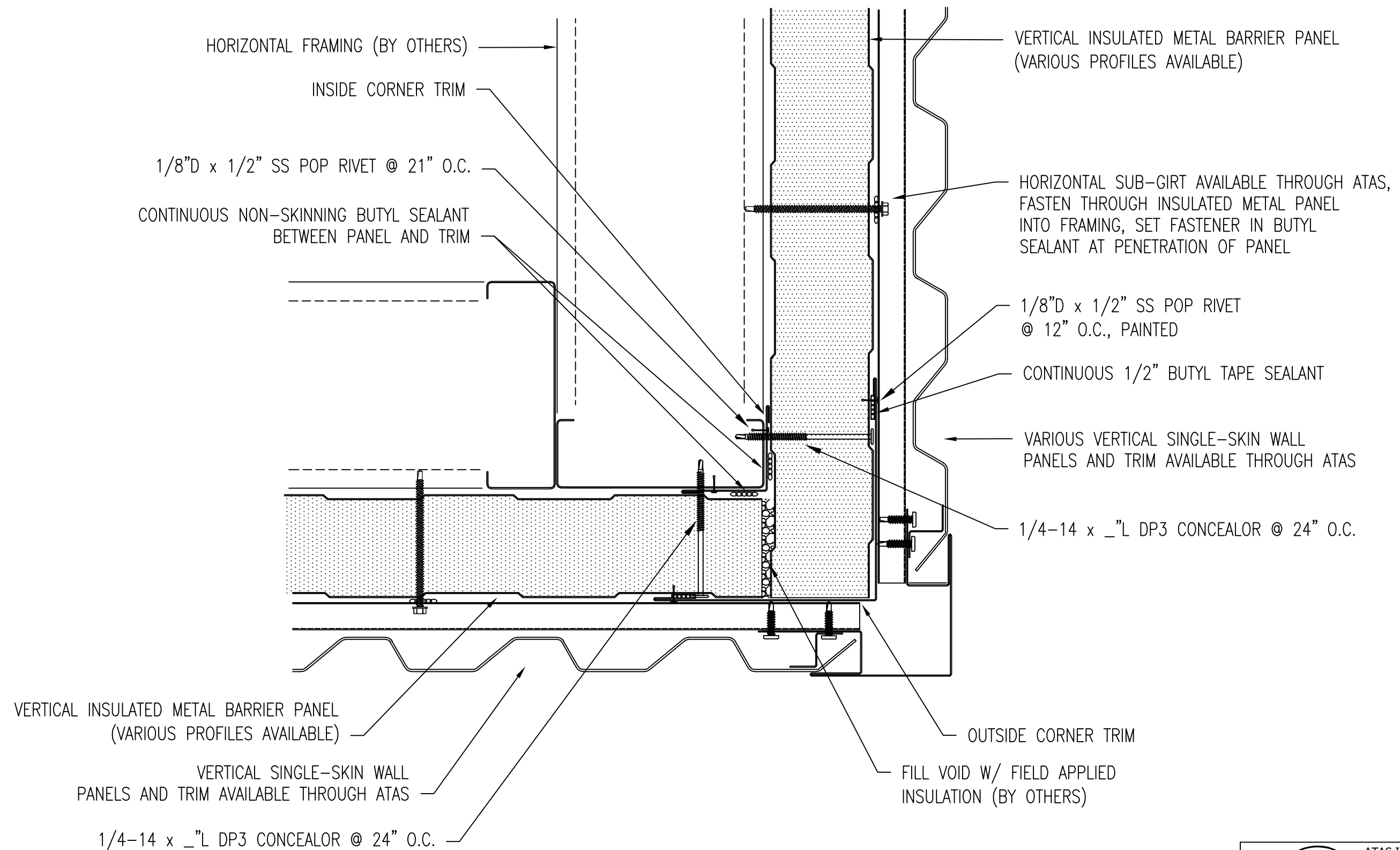
\*\* DETAIL SHOWN IS SUBJECT TO CHANGE WITHOUT NOTICE.

						Vertical Barrier Wall-End Wall			
						DWG. NO.	DR	DATE	
						APP		DATE	
						MATERIAL		SH. SIZE	SCALE
REV. NO.	DATE	DESCRIPTION OF REVISION		BY	APP			X:X	



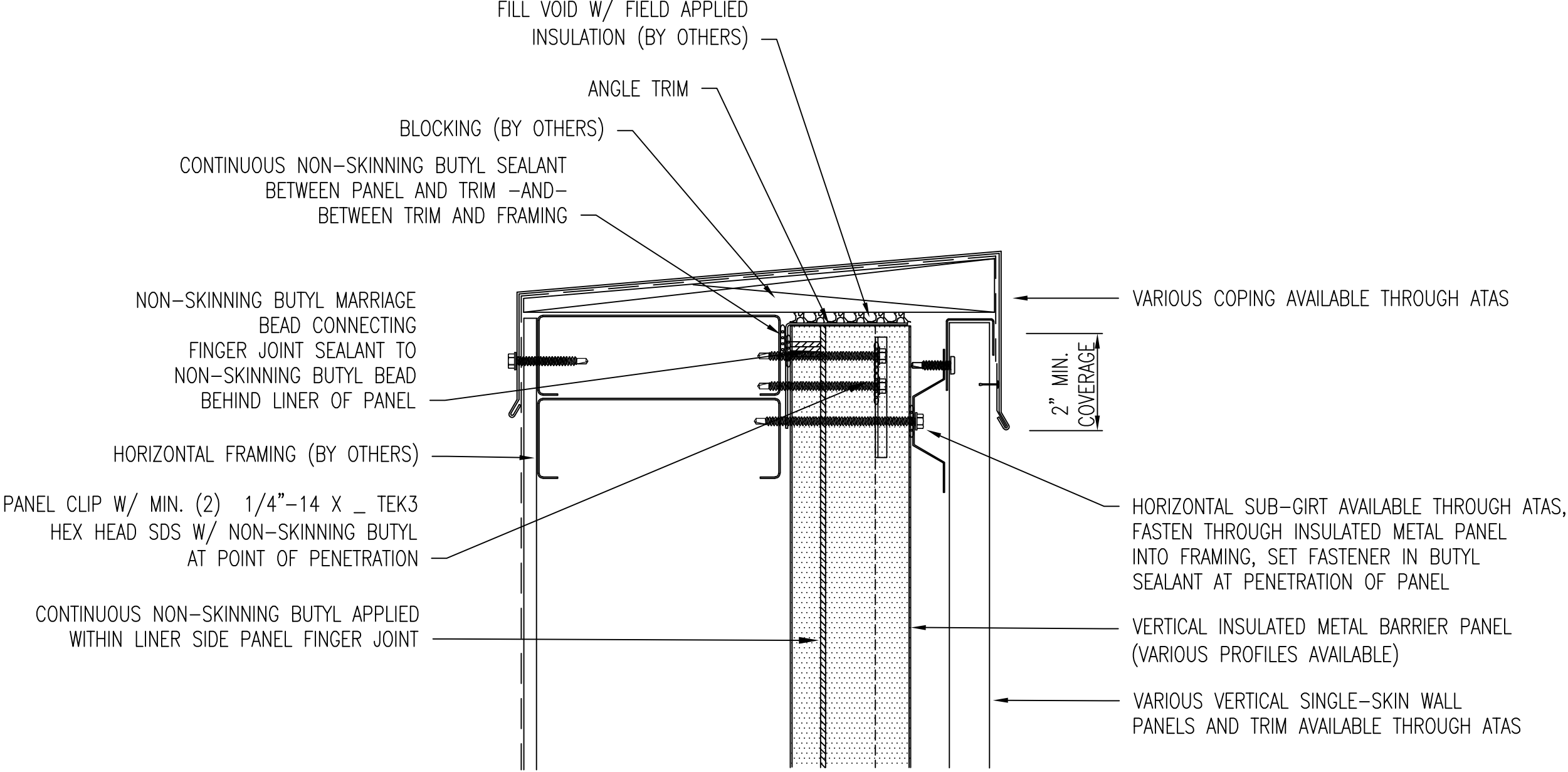
\*\* DETAIL SHOWN IS SUBJECT TO CHANGE WITHOUT NOTICE.

					 <b>ATAS INTERNATIONAL, INC</b> Allentown PA 610-395-8445 Mesa AZ 480-558-7210			
					<b>TITLE</b> Vertical Barrier Wall- Inside Corner			
					<b>DWG. NO.</b>		<b>DR</b>	<b>DATE</b>
					<b>MATERIAL</b>		<b>APP</b>	<b>DATE</b>
<b>REV. NO.</b>	<b>DATE</b>	<b>DESCRIPTION OF REVISION</b>	<b>BY</b>	<b>APP</b>	<b>SH. SIZE</b>		<b>SCALE</b>	<b>X:X</b>




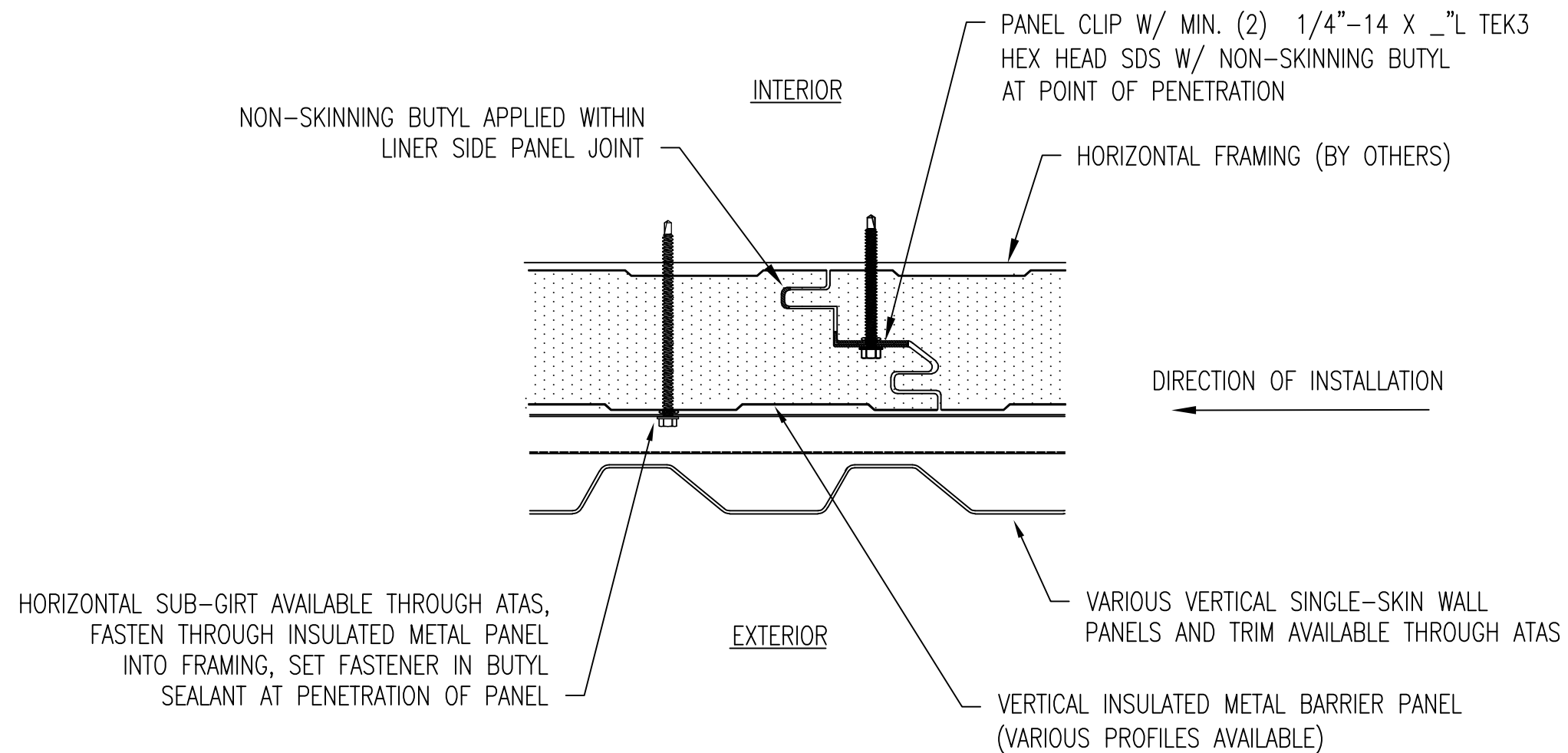
\*\* DETAIL SHOWN IS SUBJECT TO CHANGE WITHOUT NOTICE.

					TITLE			
					Vertical Barrier Wall- Outside Corner			
					DWG. NO.		DR	DATE
							APP	DATE
					MATERIAL		SH. SIZE	SCALE
REV. NO.	DATE	DESCRIPTION OF REVISION			BY	APP		X:X



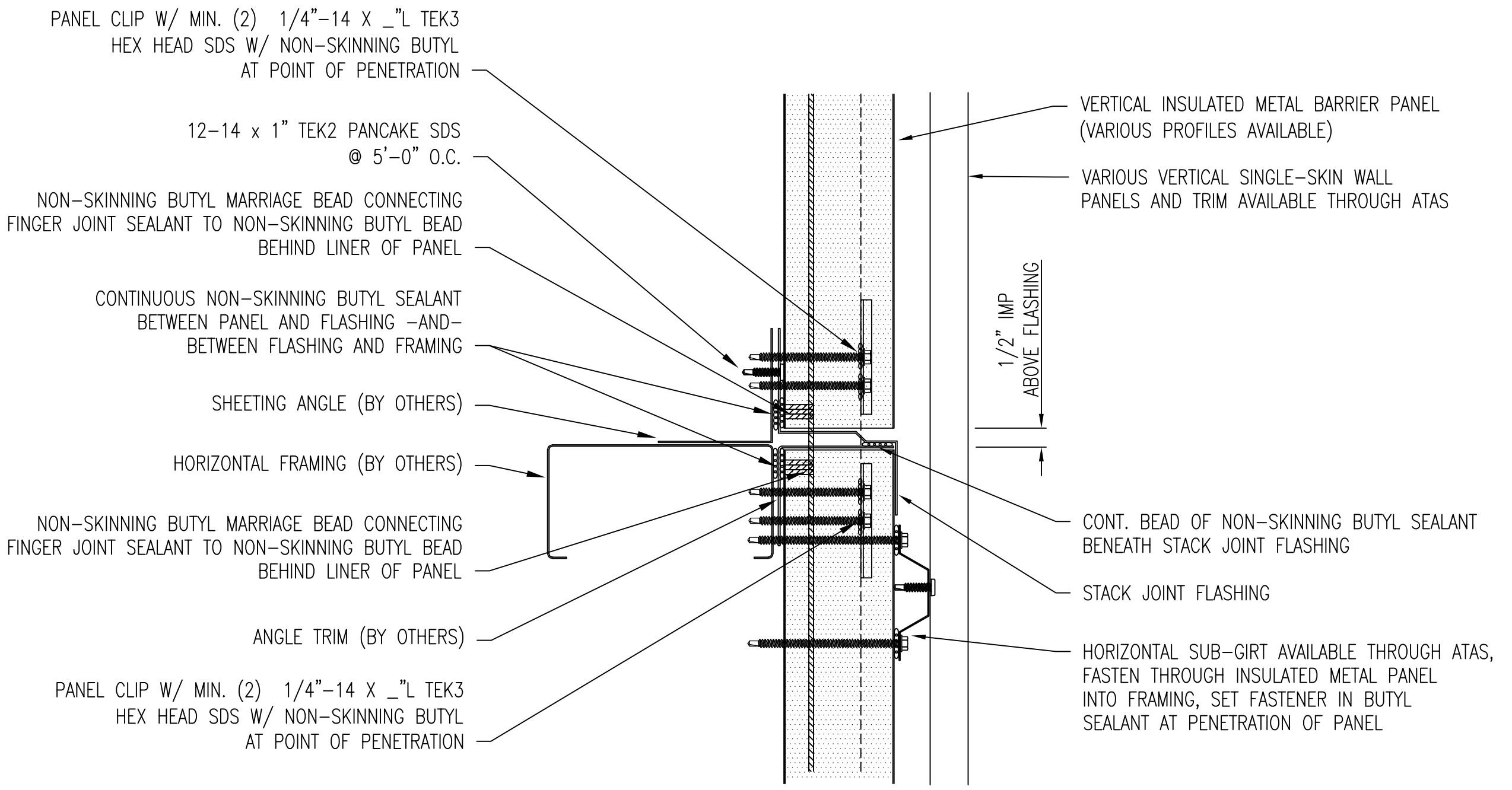
\*\* DETAIL SHOWN IS SUBJECT TO CHANGE WITHOUT NOTICE.

					ATAS INTERNATIONAL, INC		
					Allentown PA 610-395-8445 Mesa AZ 480-558-7210		
TITLE					Vertical Barrier Wall- Parapet		
DWG. NO.					DR	DATE	
MATERIAL					APP	DATE	
REV. NO.	DATE	DESCRIPTION OF REVISION	BY	APP	SH. SIZE	SCALE	X:X



\*\* DETAIL SHOWN IS SUBJECT TO CHANGE WITHOUT NOTICE.

					TITLE		Vertical Barrier Wall- Side Lap	
					DWG. NO.		DR	DATE
					MATERIAL		APP	DATE
REV. NO.	DATE	DESCRIPTION OF REVISION	BY	APP			SH. SIZE	SCALE X:X



\*\* DETAIL SHOWN IS SUBJECT TO CHANGE WITHOUT NOTICE.

					Vertical Barrier Wall- Stack Joint (not exposed)			
					DWG. NO.		DR	DATE
					MATERIAL		APP	DATE
REV. NO.	DATE	DESCRIPTION OF REVISION	BY	APP	SH. SIZE		SCALE	X:X

PANEL CLIP W/ MIN. (2) 1/4"-14 X \_ TEK3  
HEX HEAD SDS W/ NON-SKINNING BUTYL  
AT POINT OF PENETRATION

NON-SKINNING BUTYL MARRIAGE  
BEAD CONNECTING  
FINGER JOINT SEALANT TO  
NON-SKINNING BUTYL BEAD  
BEHIND LINER OF PANEL

12-14 x 1" TEK2 PANCAKE SDS  
@ 5'-0" O.C.

HORIZONTAL FRAMING (BY OTHERS)

CONTINUOUS NON-SKINNING BUTYL SEALANT  
BETWEEN PANEL AND FLASHING -AND-  
BETWEEN FLASHING AND FRAMING

BACKER ROD AND SEALANT  
(BY OTHERS)

VERTICAL INSULATED METAL BARRIER PANEL  
(VARIOUS PROFILES AVAILABLE)

VARIOUS VERTICAL SINGLE-SKIN WALL  
PANELS AND TRIM AVAILABLE THROUGH ATAS

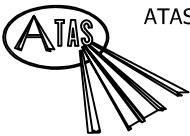
HORIZONTAL SUB-GIRT AVAILABLE THROUGH ATAS,  
FASTEN THROUGH INSULATED METAL PANEL  
INTO FRAMING, SET FASTENER IN BUTYL  
SEALANT AT PENETRATION OF PANEL

1/2" IMP  
ABOVE FLASHING

HEAD FLASHING

BACKER ROD AND SEALANT  
(BY OTHERS)

WINDOW FRAME (BY OTHERS)



ATAS INTERNATIONAL, INC  
Allentown PA  
610-395-8445  
Mesa AZ  
480-558-7210

TITLE  
Vertical Barrier Wall- Window Head

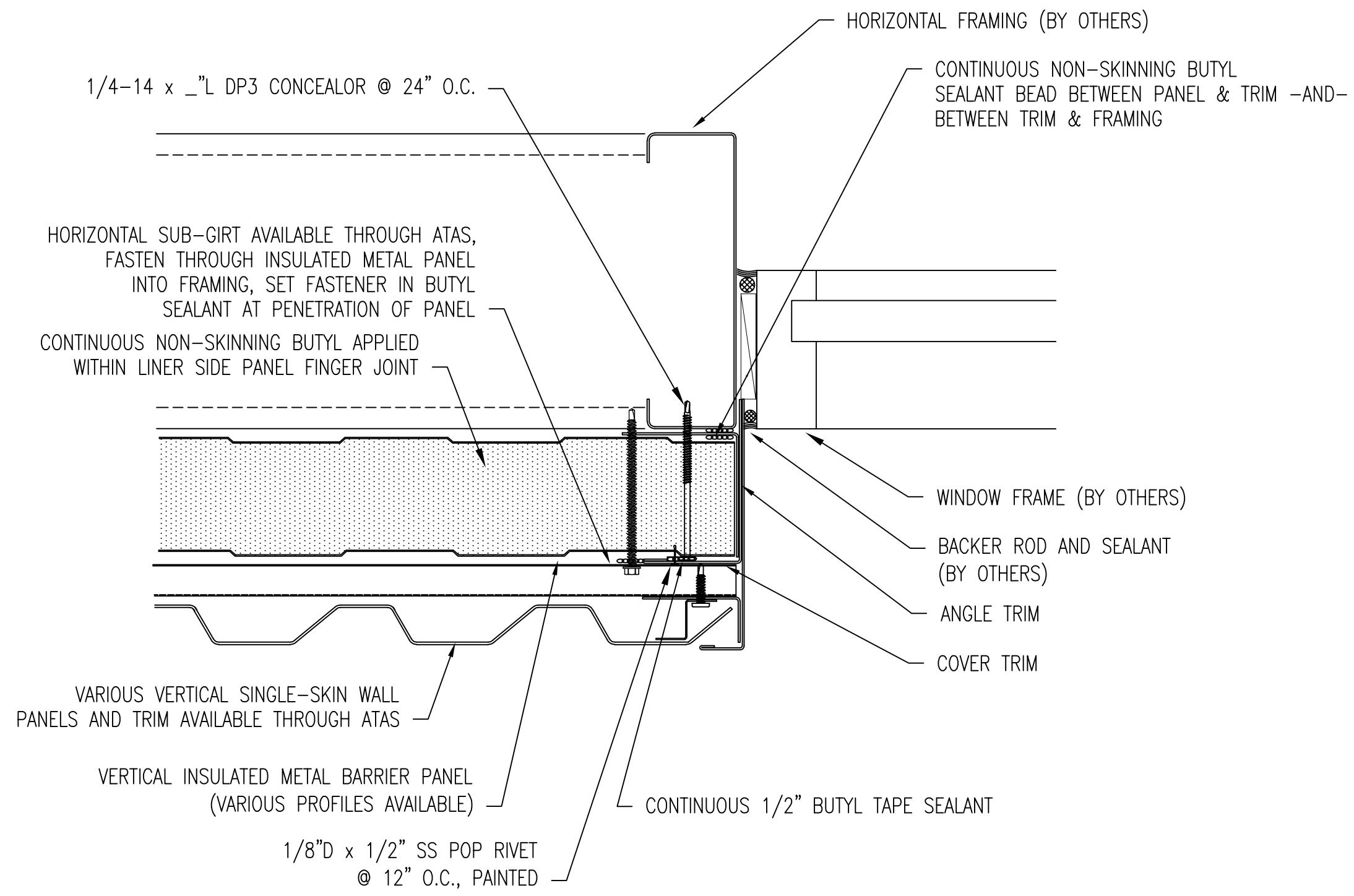
DWG. NO. DR DATE

MATERIAL APP DATE

SH. SIZE SCALE X:X

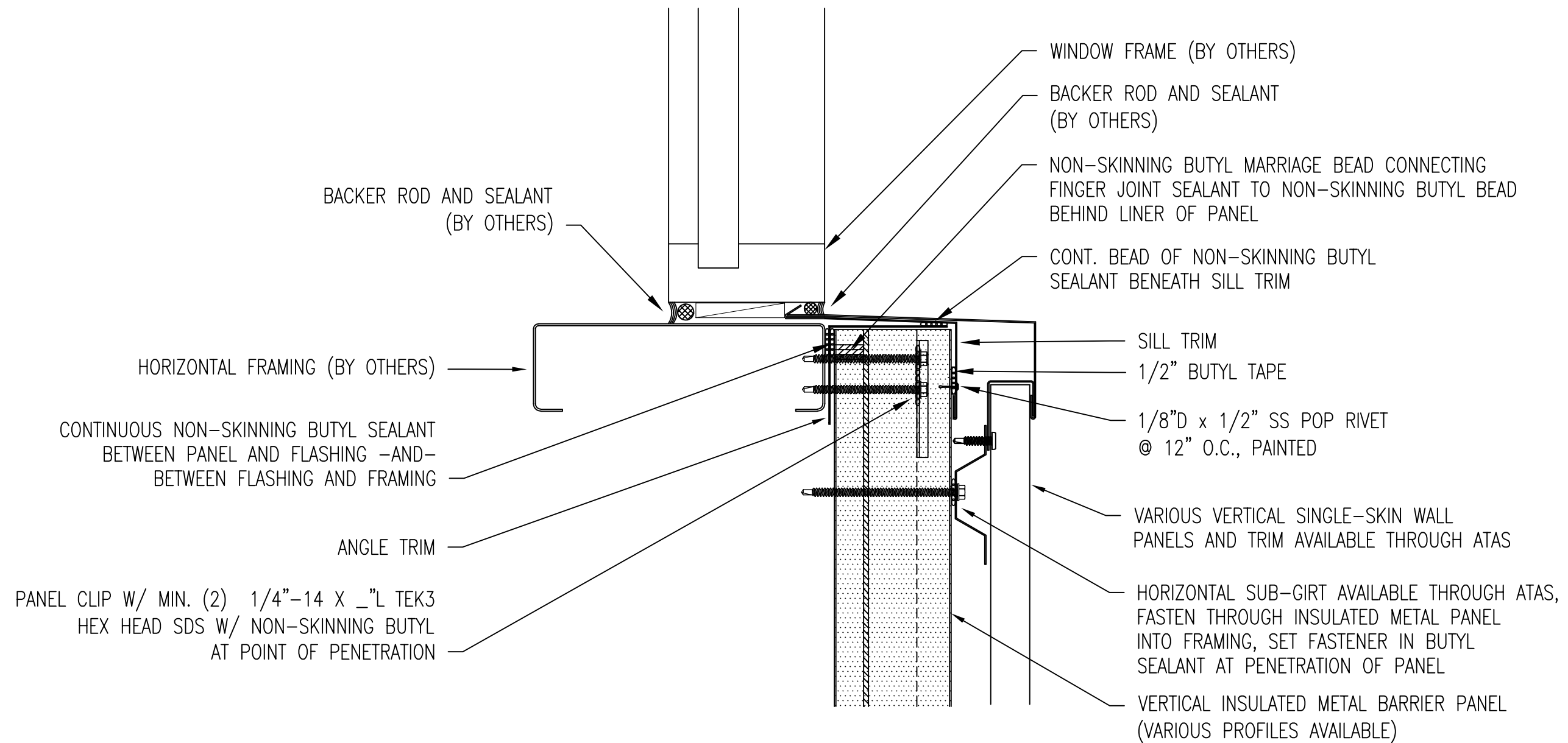
REV. NO.	DATE	DESCRIPTION OF REVISION	BY	APP

\*\* DETAIL SHOWN IS SUBJECT TO CHANGE WITHOUT NOTICE.



\*\* DETAIL SHOWN IS SUBJECT TO CHANGE WITHOUT NOTICE.

					TITLE			
					Vertical Barrier Wall- Window Jamb			
					DWG. NO.		DR	DATE
							APP	DATE
					MATERIAL		SH. SIZE	SCALE
REV. NO.	DATE	DESCRIPTION OF REVISION			BY	APP		X:X



\*\* DETAIL SHOWN IS SUBJECT TO CHANGE WITHOUT NOTICE.

					<div> <b>ATAS INTERNATIONAL, INC</b> Allentown PA 610-395-8445 Mesa AZ 480-558-7210</div>			
					<b>TITLE</b> Vertical Barrier Wall- Window Sill			
					<b>DWG. NO.</b>		<b>DR</b>	<b>DATE</b>
					<b>MATERIAL</b>		<b>APP</b>	<b>DATE</b>
<b>REV. NO.</b>	<b>DATE</b>	<b>DESCRIPTION OF REVISION</b>	<b>BY</b>	<b>APP</b>			<b>SH. SIZE</b>	<b>SCALE</b>
								<b>X:X</b>