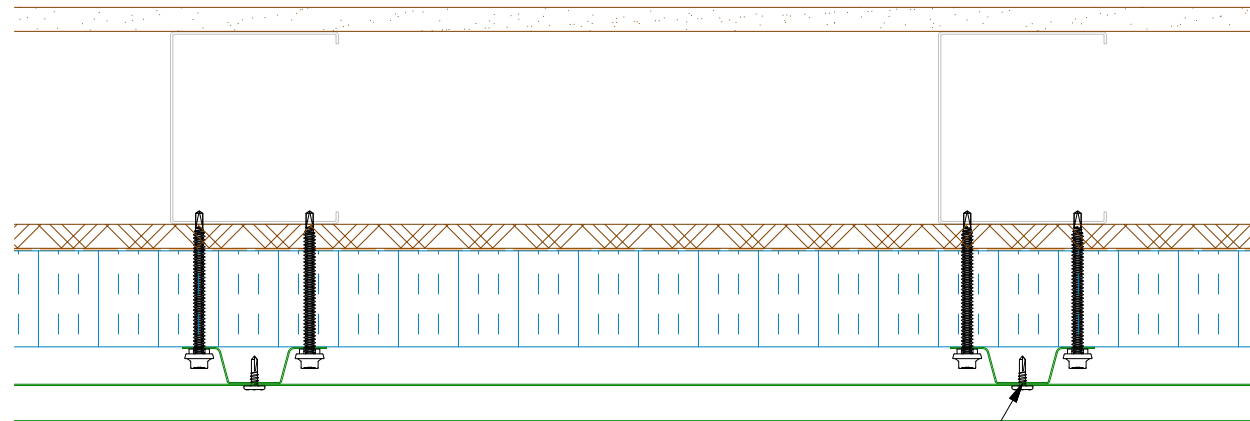
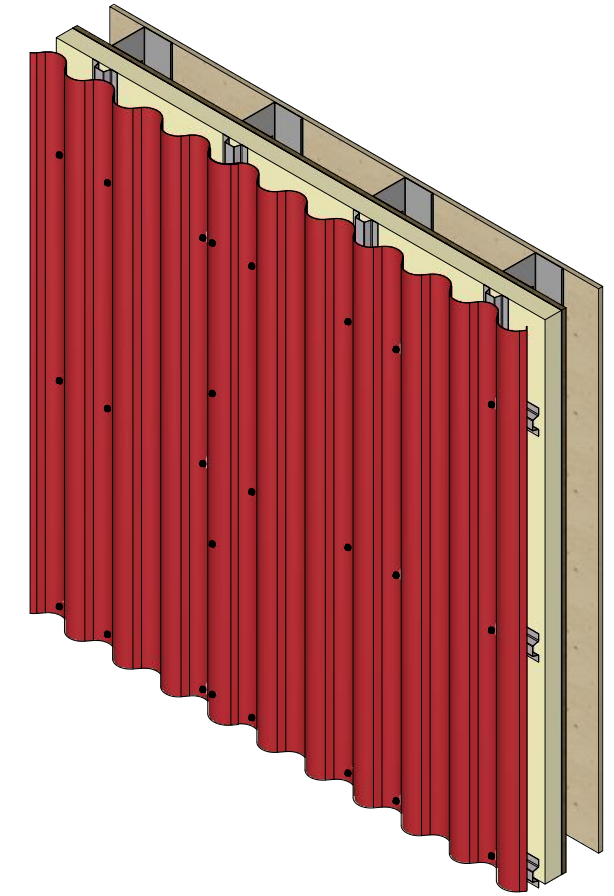
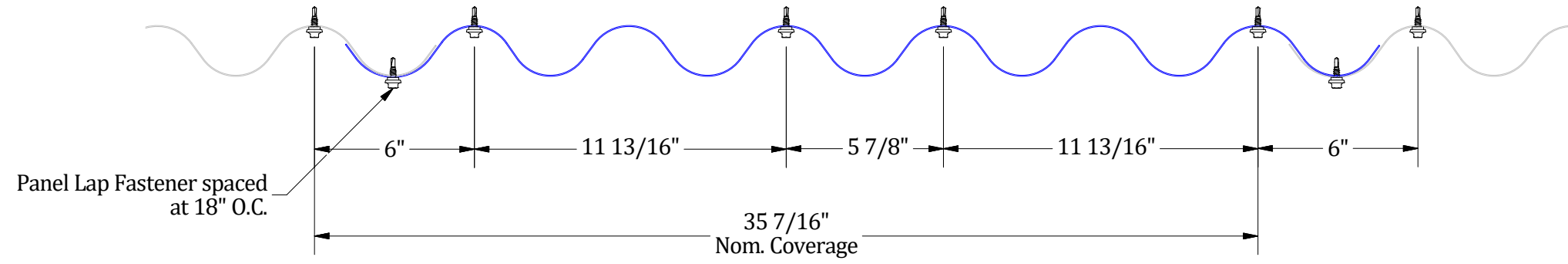
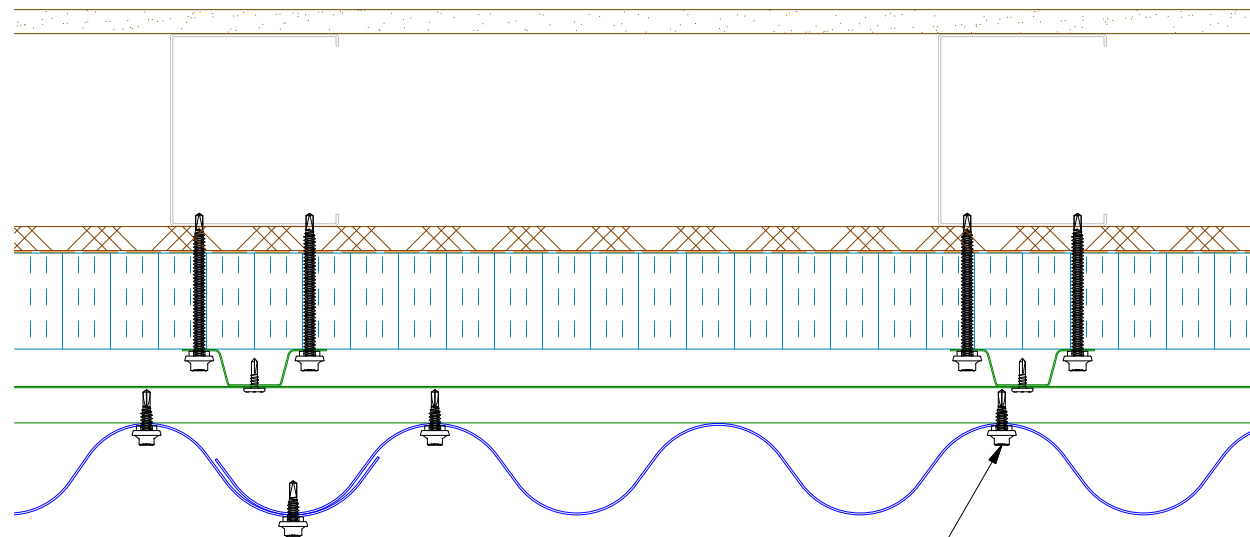


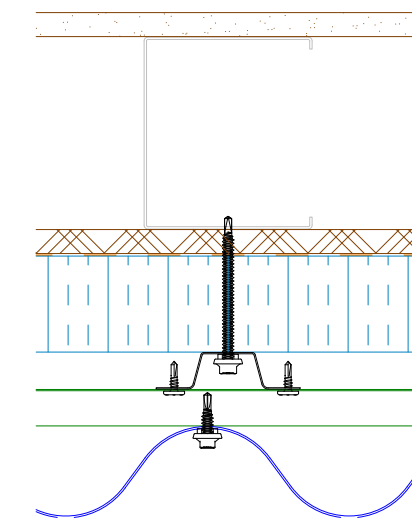
# Vertical Panel



Attach Subgirts into Metal Wall Studs using Appropriate Fasteners.



Attach Panel System to Subgirts using #14 x 7/8" Hex Washer Head Fasteners



Alternative Subgirt Orientation

## Notes:



DWG TITLE:		Open Framing Installation Detail	
DWG No:	M.L.P.	DWG DATE:	1/12/2026
APP BY:	D.S.	APP DATE:	1/14/2026
PANELS/PRODUCT:		BY	APP
Corra-Max		SHEET SIZE:	B
		SCALE:	X : X

REV. NO.	DATE	DESCRIPTION OF REVISION	BY	APP
0	1/12/2026	Initial Release	D.S.	M.L.P.