

CASTLETOP®

SKU: HCT160

MATERIAL

.032 aluminum

16 oz. copper*

.8 mm zinc*

SHINGLE SPECS

Size: 15¾" x 15¾"

Coverage: 13½" x 13½"

TEXTURE

Smooth (copper and zinc only)

Stucco Embossed (aluminum only)

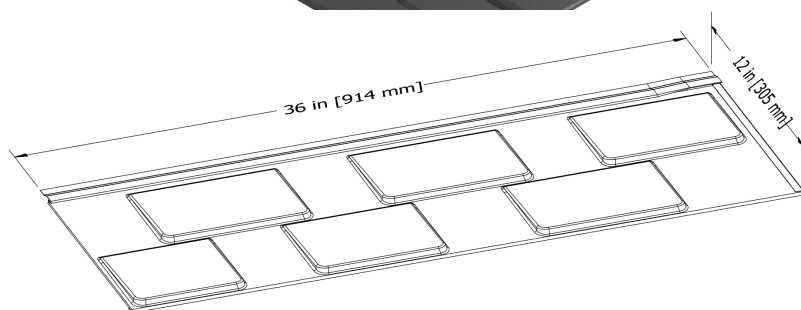
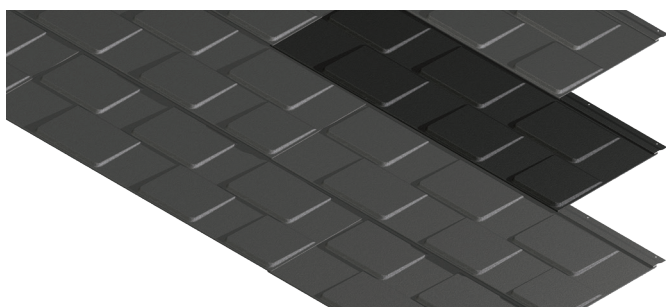
FASTENERS

Concealed fasteners

MINIMUM SLOPE

3:12

www.atas.com/castletopproofs



ADVANTA® SHINGLE

SKU: HAS300

MATERIAL

29 ga. metallic coated steel

SHINGLE SPECS

Coverage: 12" x 36"

TEXTURE

Stucco Embossed

COLORS

Stock Colors: Mission Red, Forest Green, Char Brown, Sierra Tan, Slate Grey, Rocky Grey, Redwood, Bone White

Advanta Variegated Colors: Nine stock colors (left)

ADVANTA VARIEGATED COLORS



Asheland Slate (AS)



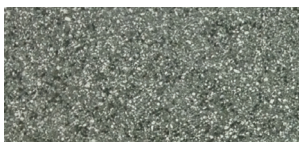
Baja Slate (BS)



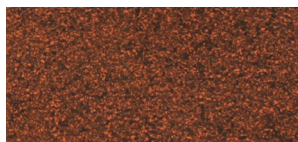
Quarry Slate (QS)



Willow Slate (WS)



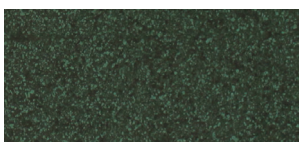
Beech Tree (BT)



Deep Granite (DG)



Rocky Cliff (RC)



Shaded Spruce (SS)



Weathered Stone (WN)

FASTENERS

Concealed fasteners

MINIMUM SLOPE

3:12

www.atas.com/advanta