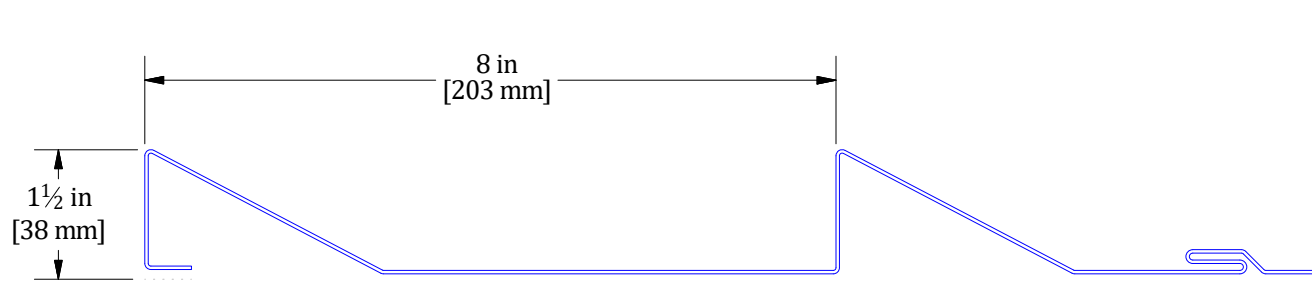
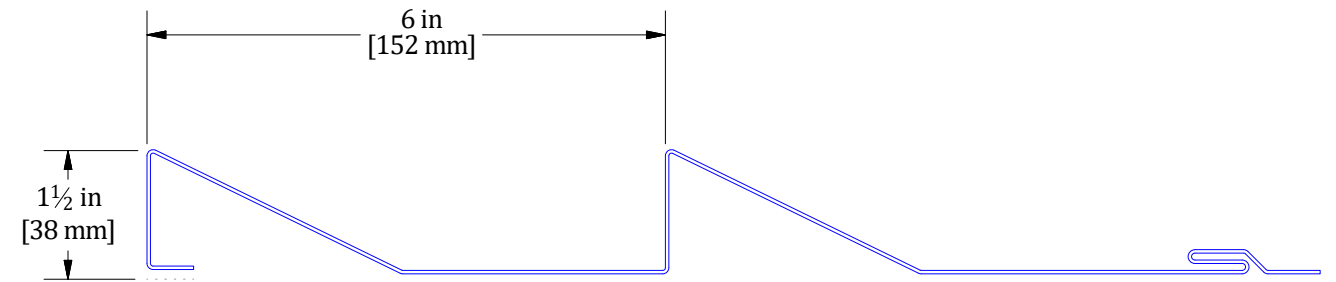


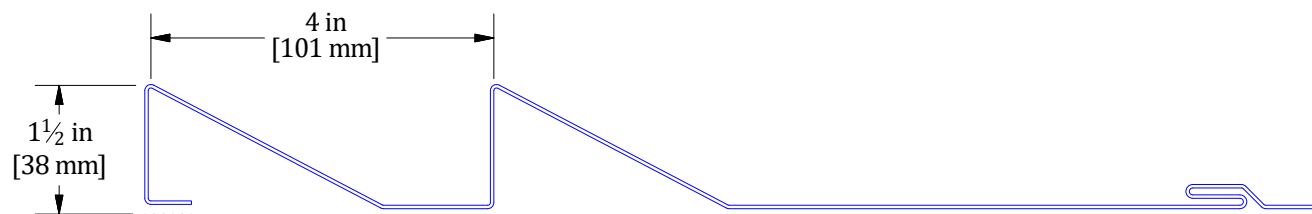
MFF120



MFF121



MFF123



MFF122

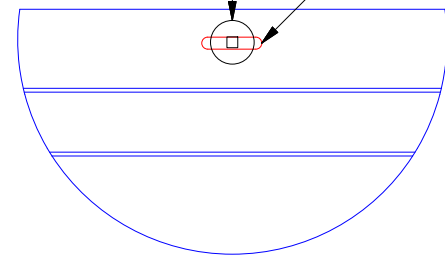


MFF124

Notes:

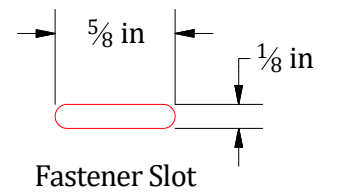
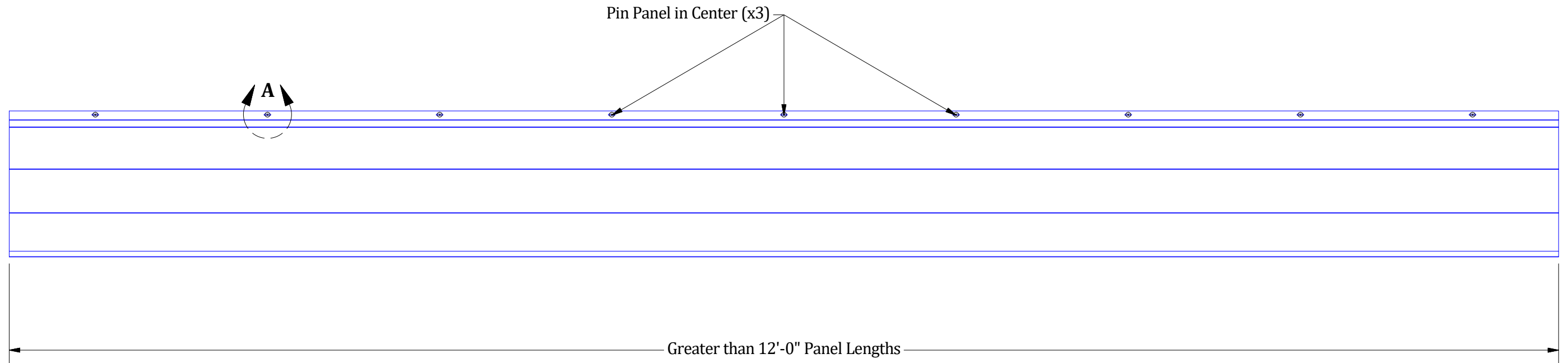
| | | | | | | | |
|----------|-----------|-----------------|-------------------------|--------|------|-------------------------------------|---------------------|
| REV. NO. | | DATE | DESCRIPTION OF REVISION | BY | APP | DWG TITLE: Panel Profiles | |
| 0 | 4/30/2026 | Initial Release | | M.L.P. | D.S. | DWG No. (MFF) MultiFin | |
| | | | | | | DWG BY: M.L.P. | DWG DATE: 4/30/2026 |
| | | | | | | APP BY: D.S. | APP DATE: 4/30/2026 |
| | | | | | | SHEET SIZE: B | SCALE: X : X |

Secure Fastener in Center of the Slot
 Field Pre-Punch Fastener Slots to allow for Panel Expansion and Contraction



DETAIL A

Pin Panel in Center (x3)

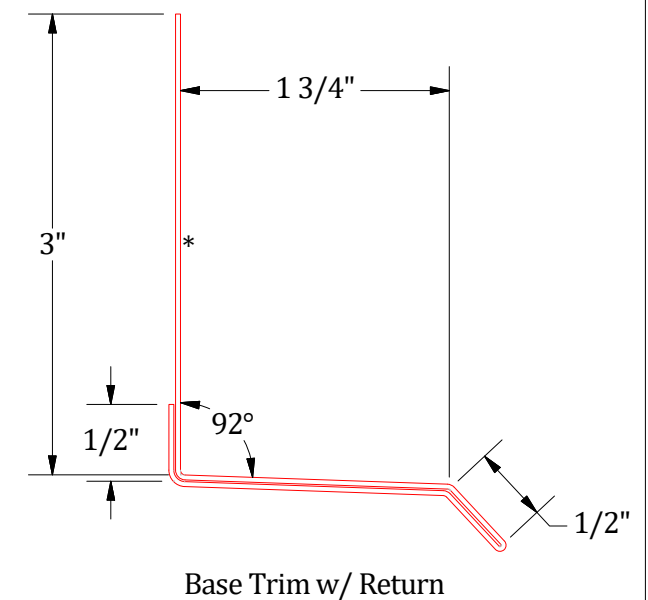
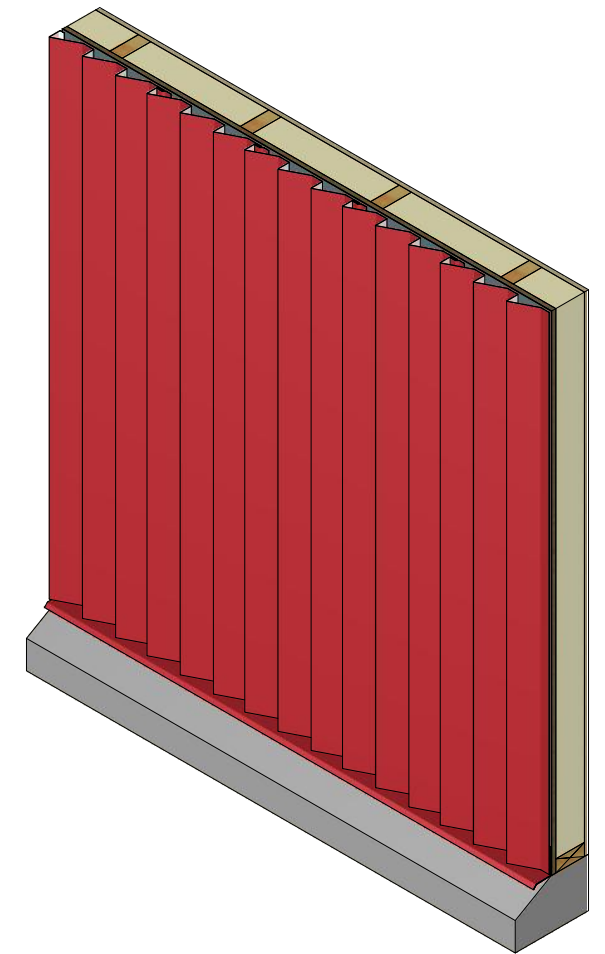
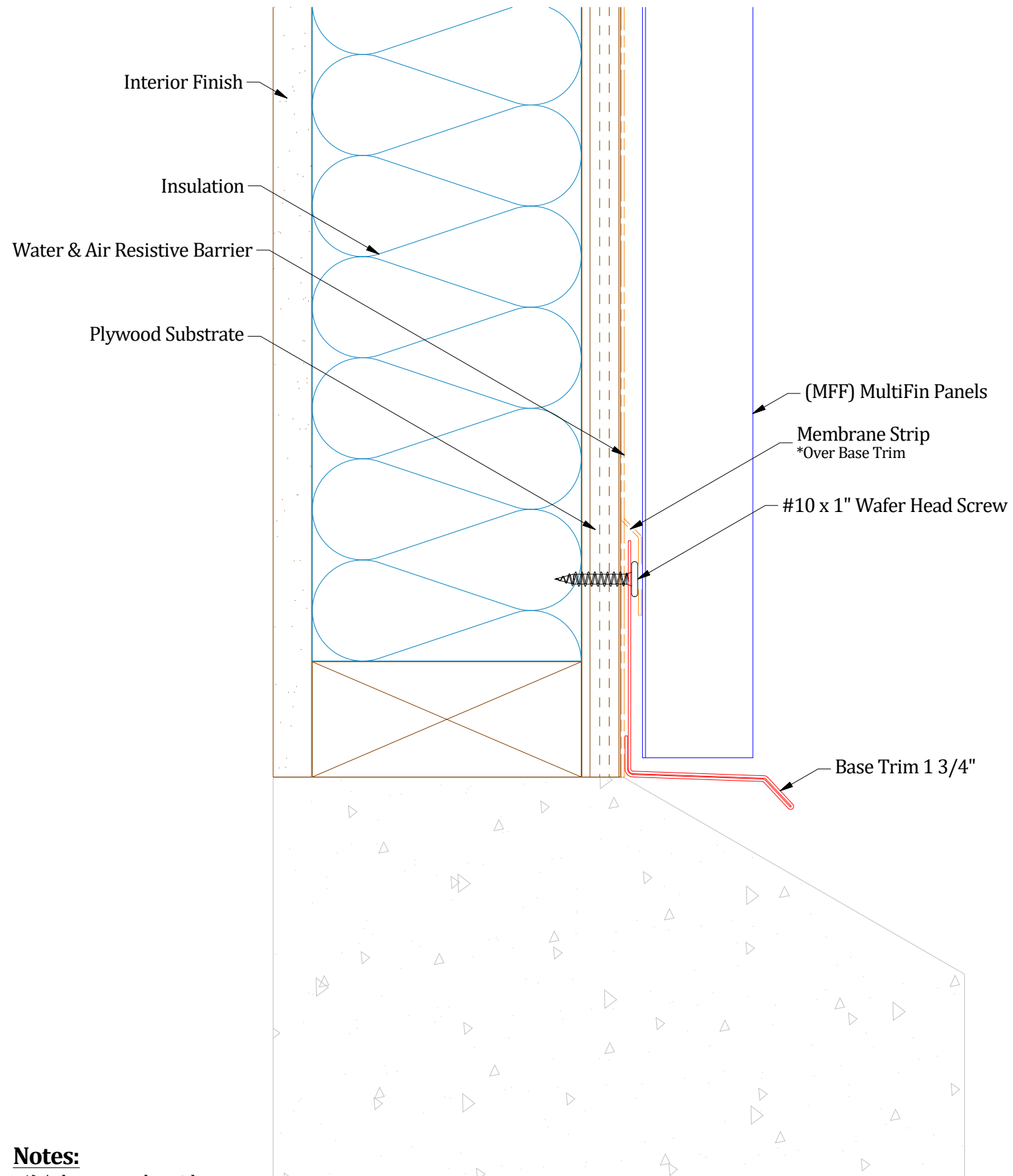


Notes:

ATAS **ATAS International, Inc.**
 Sustainable Solutions For A Better Future
 www.atas.com | info@atas.com
 800.468.1441

| | | | |
|--|-----------|-------------------------|------------------------|
| DWG TITLE: Panel Fastening Slot Detail | | DWG No: | DWG DATE: 4/30/2026 |
| REV. NO. | DATE | DESCRIPTION OF REVISION | BY APP |
| 0 | 4/30/2026 | Initial Release | M.L.P. D.S. |
| PANELS/PRODUCT: (MFF) MultiFin | | APP BY: D.S. | APP DATE: 4/30/2026 |
| SHEET SIZE: B | | SCALE: X : X | |

Vertical Panel

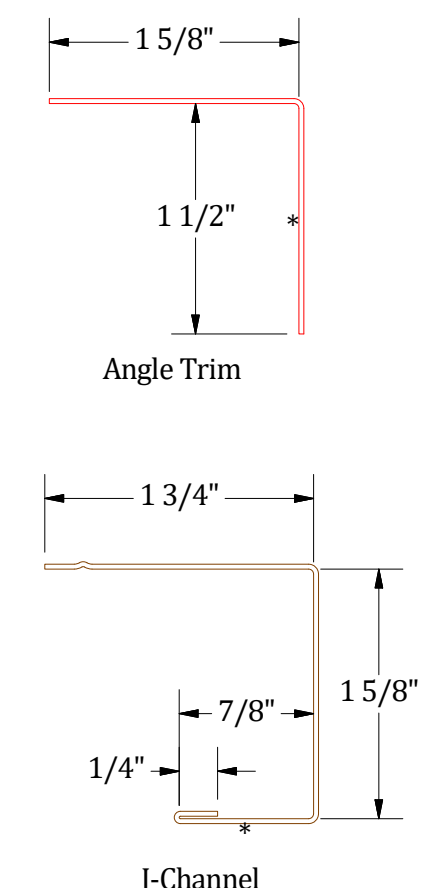
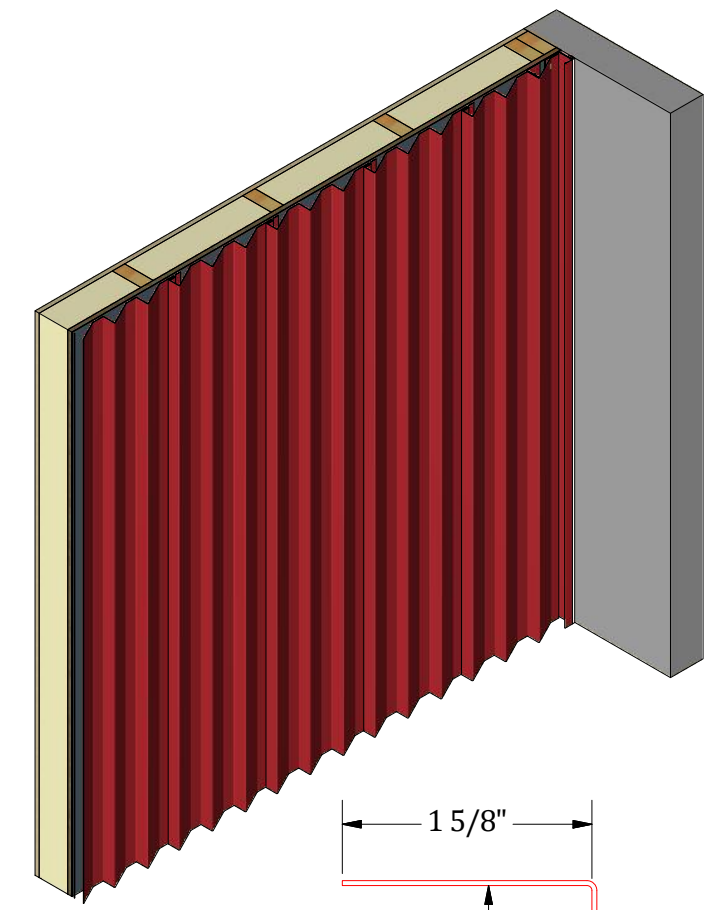
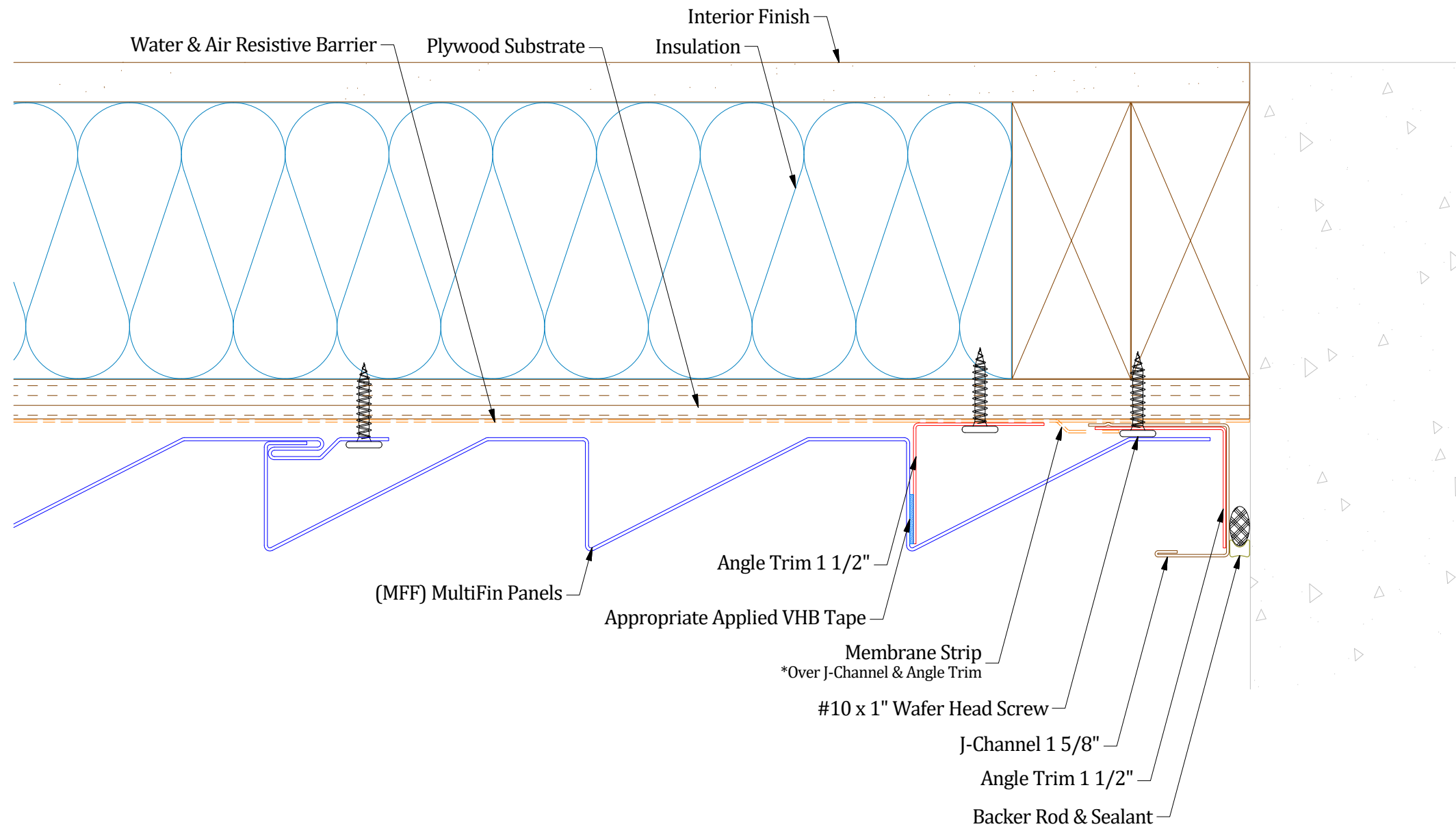


Notes:
1) * denotes color side.

ATAS International, Inc.
Sustainable Solutions For A Better Future
www.atas.com | info@atas.com
800.468.1441

| | | | | | | | |
|----------|-----------|-----------------|-------------------------|--------|------|--|--|
| REV. NO. | | DATE | DESCRIPTION OF REVISION | BY | APP | DWG TITLE: Base Detail | |
| 0 | 4/30/2026 | Initial Release | | M.L.P. | D.S. | DWG No.: | |
| | | | | | | DWG DATE: 4/30/2026 | |
| | | | | | | APP BY: D.S. | |
| | | | | | | APP DATE: 4/30/2026 | |
| | | | | | | PANELS/PRODUCT: (MFF) MultiFin | |
| | | | | | | SHEET SIZE: B | |
| | | | | | | SCALE: X : X | |

Vertical Panel



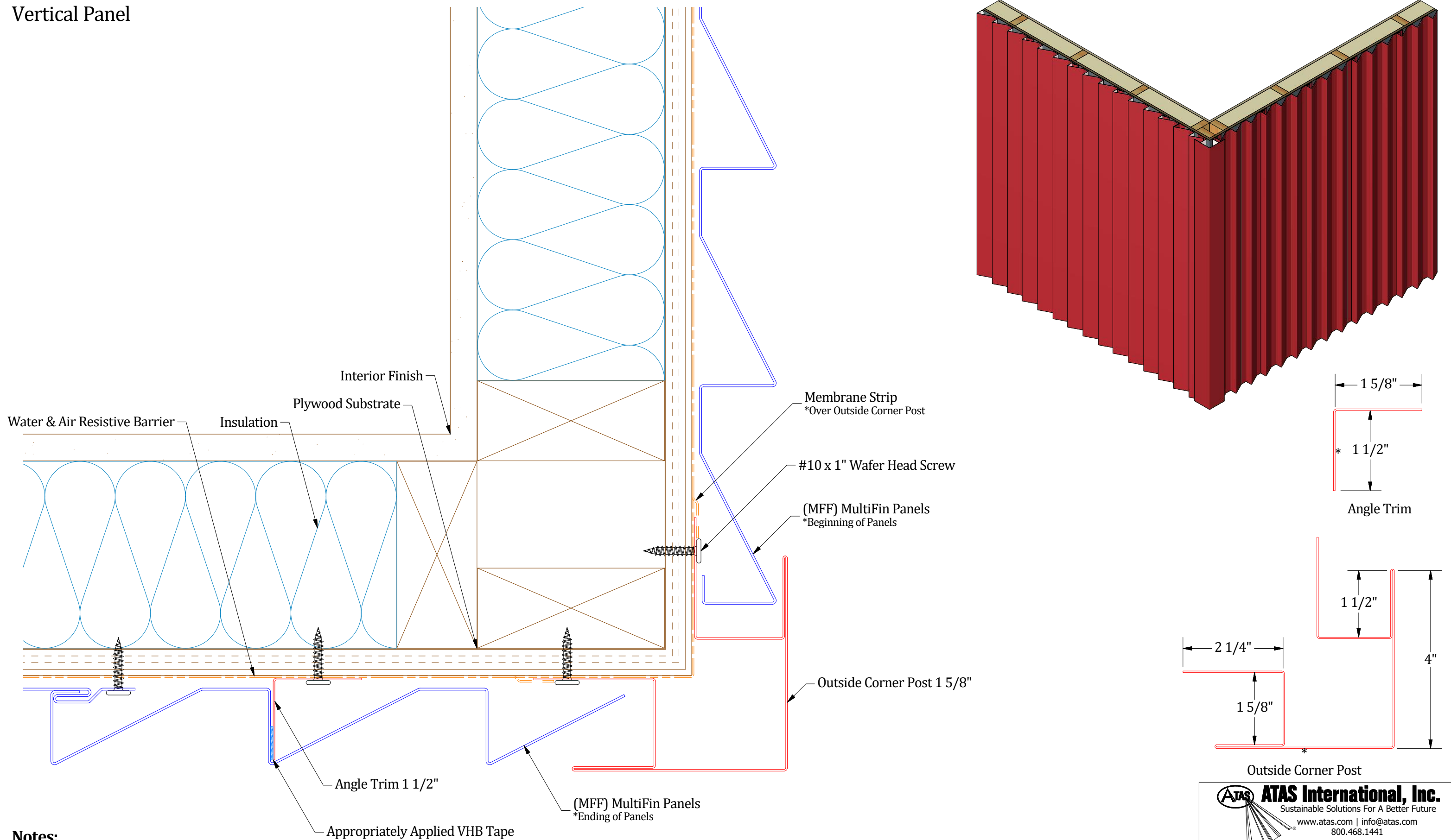
Notes:
1) * denotes color side.

ATAS International, Inc.
Sustainable Solutions For A Better Future
www.atas.com | info@atas.com
800.468.1441

| | | | |
|--|--|------------------|------------------------|
| DWG TITLE: Endwall Detail | | DWG No.: | DWG DATE: 4/30/2026 |
| DWG BY: M.L.P. | | APP BY: D.S. | APP DATE: 4/30/2026 |
| PANELS/PRODUCT: (MFF) MultiFin | | SHEET SIZE: B | SCALE: X : X |

| REV. NO. | DATE | DESCRIPTION OF REVISION | BY | APP |
|----------|-----------|-------------------------|--------|------|
| 0 | 4/30/2026 | Initial Release | M.L.P. | D.S. |

Vertical Panel



Notes:

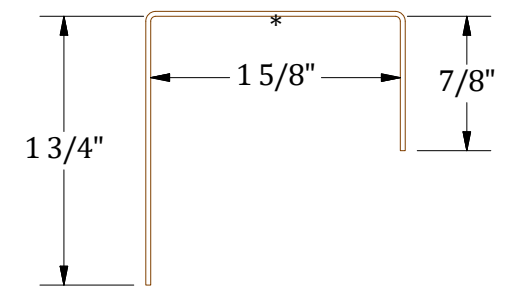
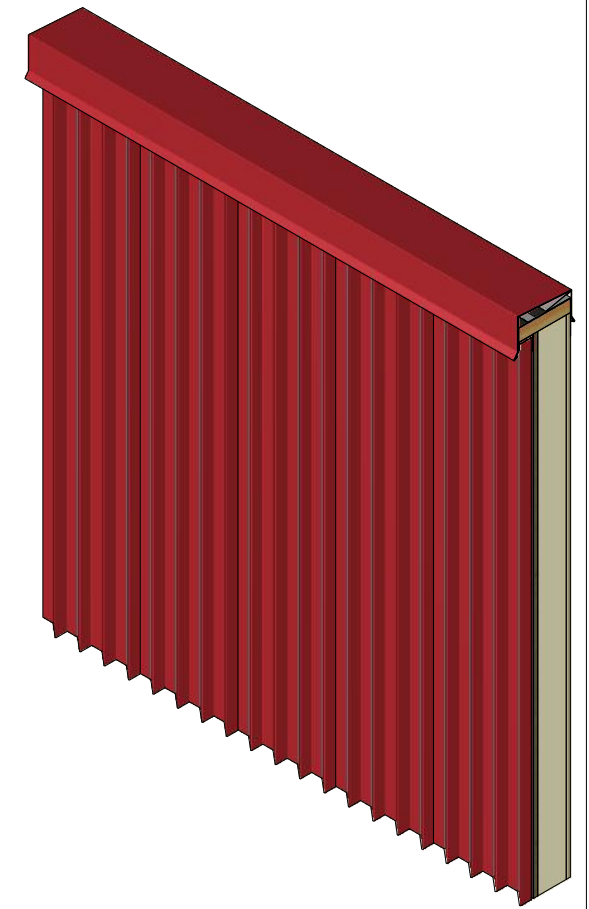
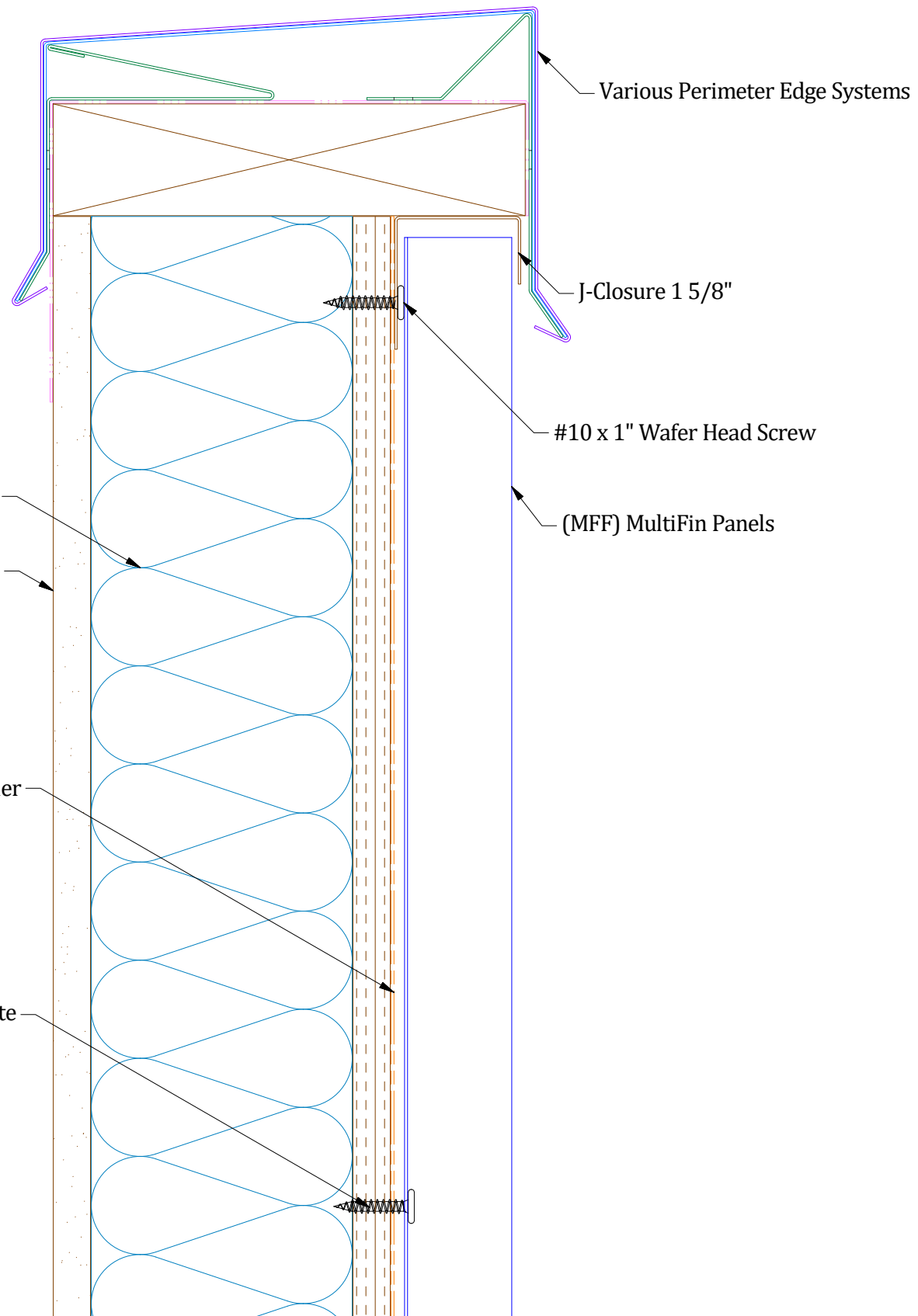
1) * denotes color side.

ATAS International, Inc.
Sustainable Solutions For A Better Future
www.atas.com | info@atas.com
800.468.1441

Outside Corner Post Detail

| | | | | | | | | | |
|----------|-----------|-----------------|-------------------------|--------|------|-------------------------------------|--|-------------|-----------|
| REV. NO. | | DATE | DESCRIPTION OF REVISION | BY | APP | DWG TITLE: (MFF) MultiFin | | DWG No. | DWG DATE: |
| 0 | 4/30/2026 | Initial Release | | M.L.P. | D.S. | | | M.L.P. | 4/30/2026 |
| | | | | | | PANELS/PRODUCT: | | APP BY: | APP DATE: |
| | | | | | | | | D.S. | 4/30/2026 |
| | | | | | | | | SHEET SIZE: | SCALE: |
| | | | | | | | | B | X : X |

Vertical Panel



J-Closure

Notes:

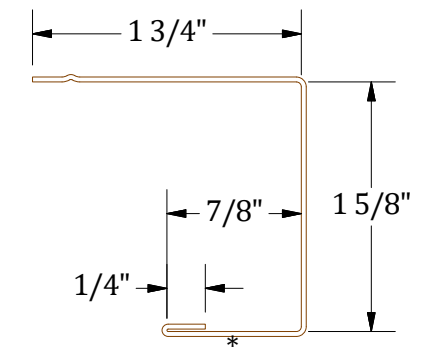
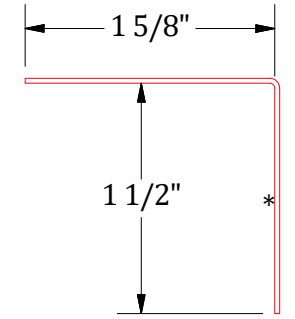
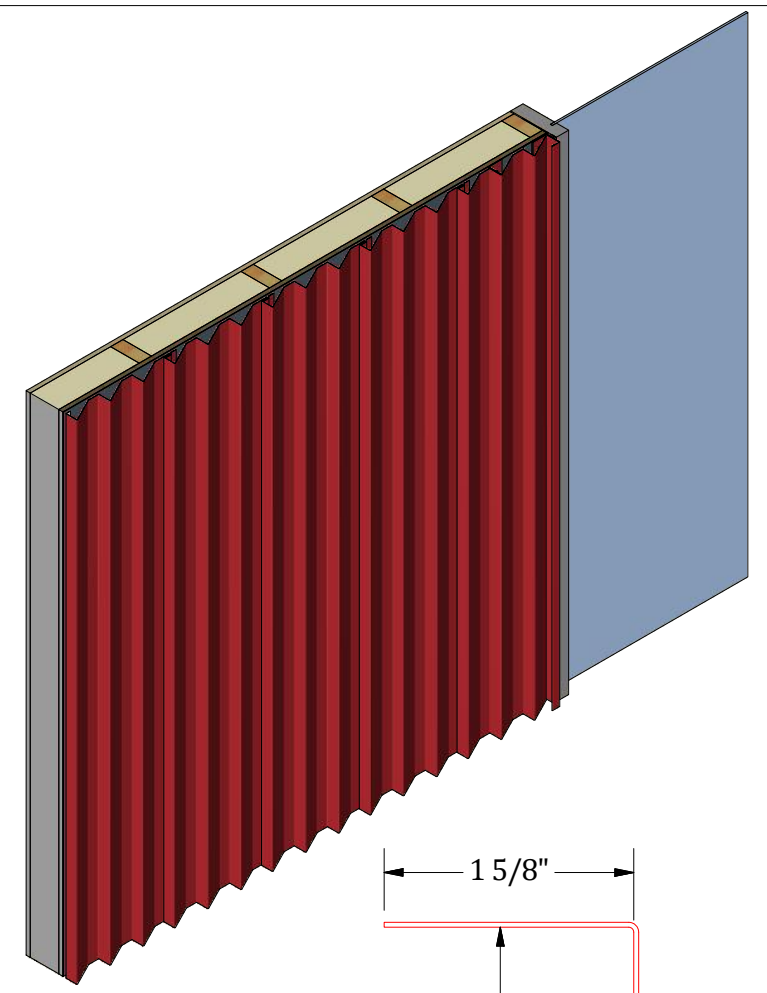
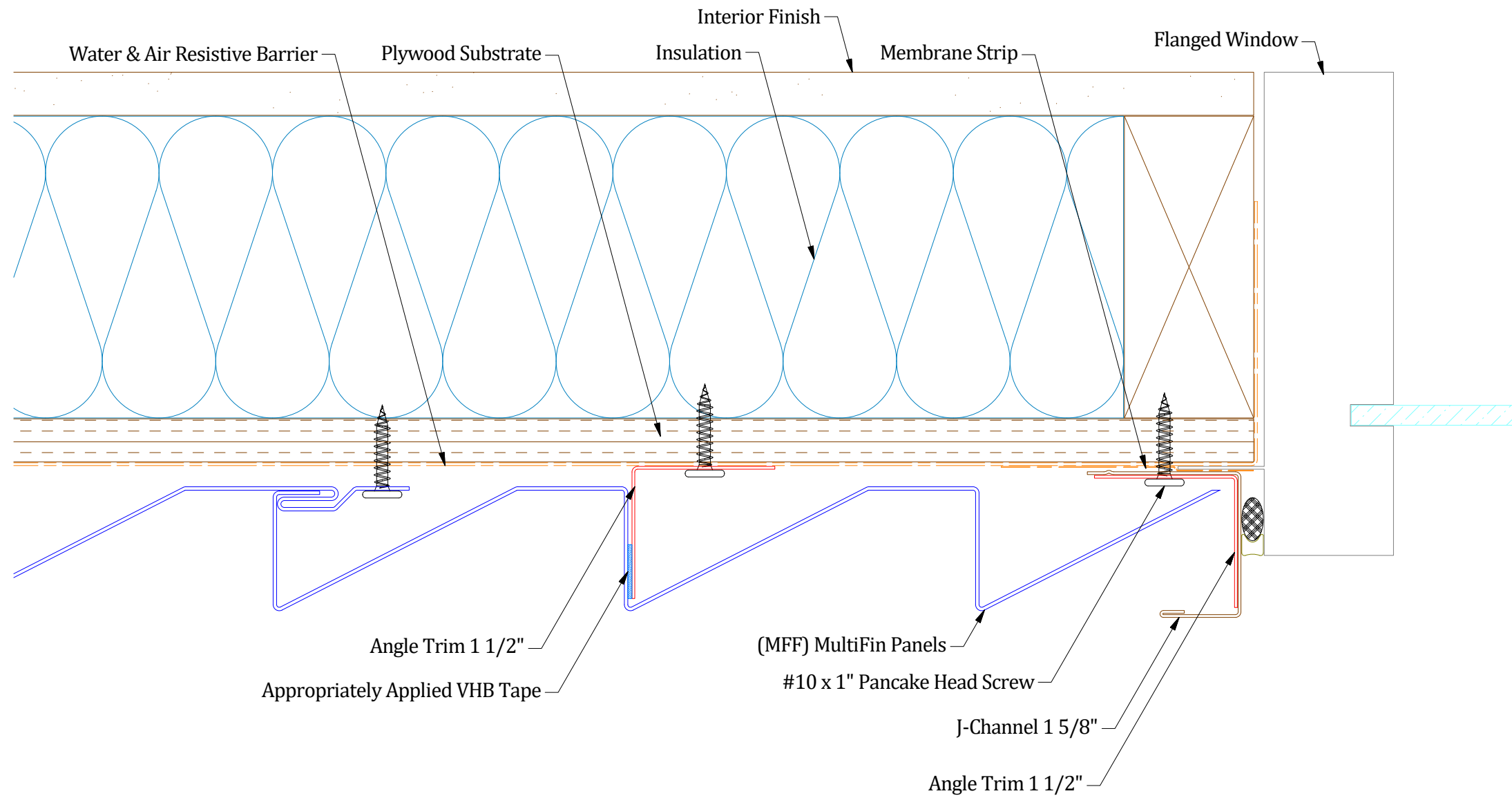
1) * denotes color side.

ATAS International, Inc.
Sustainable Solutions For A Better Future
www.atas.com | info@atas.com
800.468.1441

Top of Wall Detail

| | | | | | | | | | | |
|-----------------|-----------|-----------------|-------------------------|--------|------|----------------|--|-----------|-----------|-----------|
| REV. NO. | | DATE | DESCRIPTION OF REVISION | BY | APP | DWG TITLE: | | DWG No: | | DWG DATE: |
| 0 | 4/30/2026 | Initial Release | | M.L.P. | D.S. | (MFF) MultiFin | | M.L.P. | 4/30/2026 | |
| PANELS/PRODUCT: | | | | | | DWG BY: | | APP DATE: | | |
| | | | | | | D.S. | | 4/30/2026 | | |
| | | | | | | SHEET SIZE: | | SCALE: | | |
| | | | | | | B | | X : X | | |

Vertical Panel

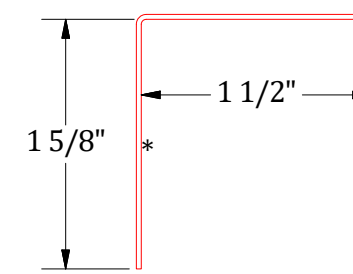
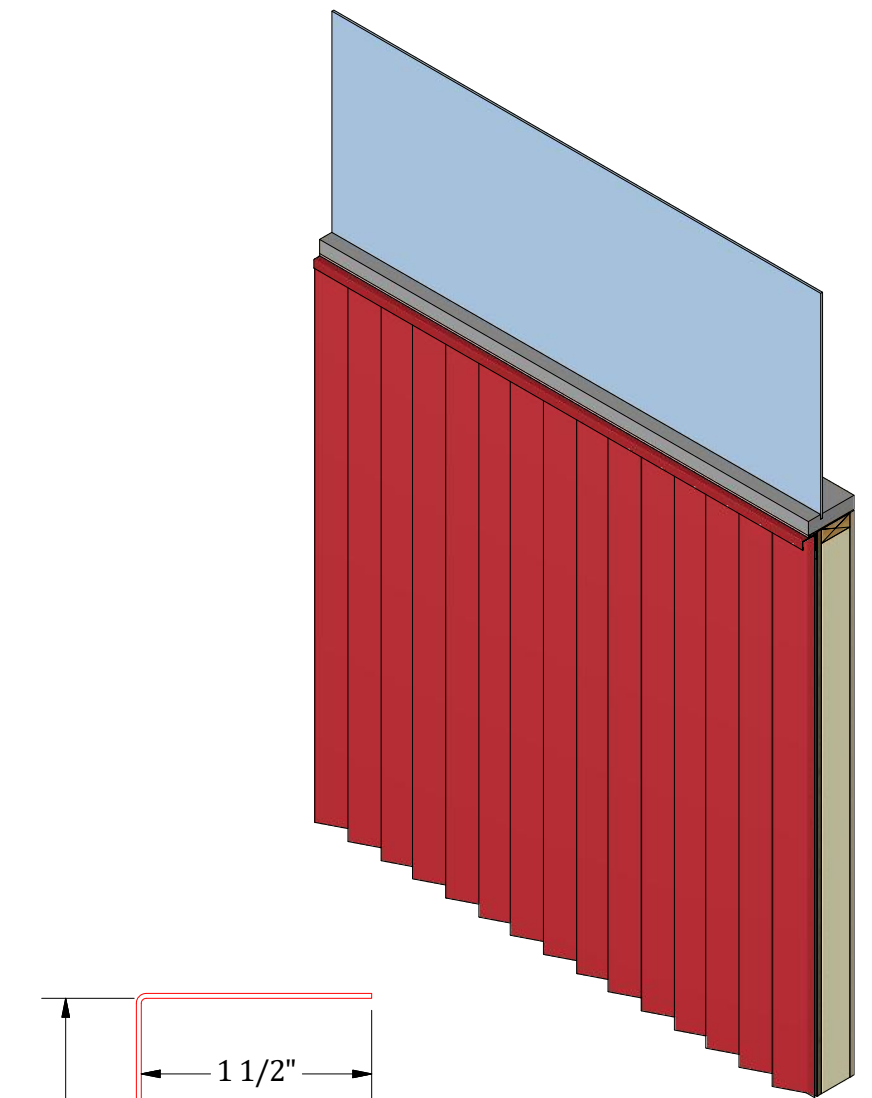
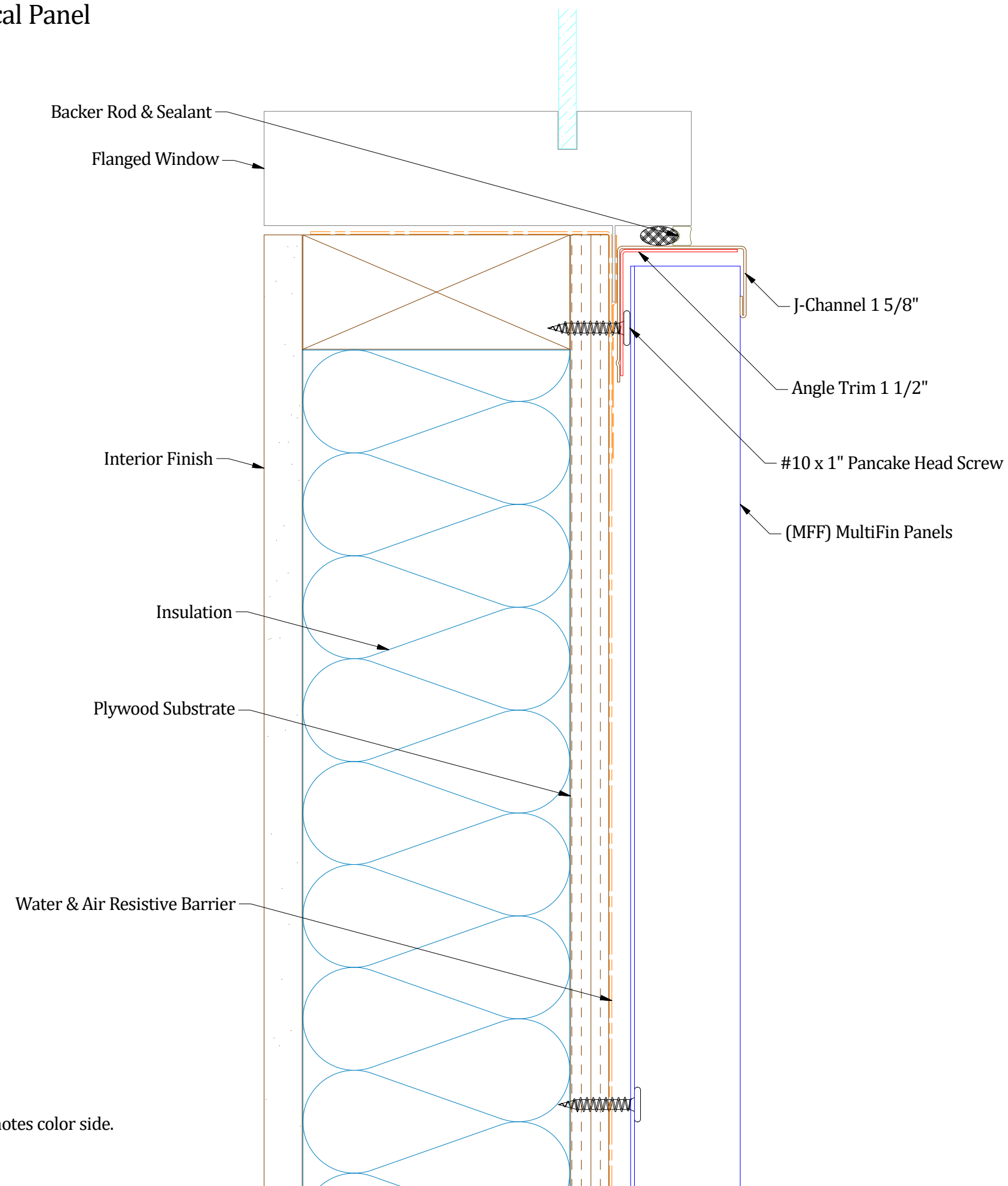


Notes:
1) * denotes color side.

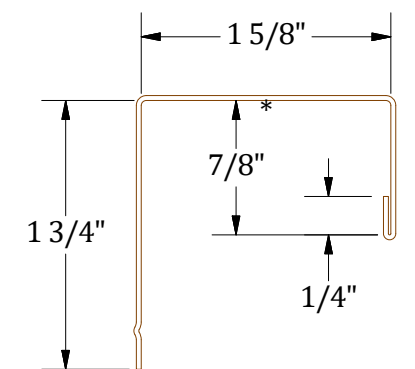
ATAS International, Inc.
Sustainable Solutions For A Better Future
www.atas.com | info@atas.com
800.468.1441

| | | | | | |
|---|-----------|------------------|--------|------------------------|--|
| DWG TITLE: Flanged Window Jamb Detail | | DWG No.: | | DWG DATE: 4/30/2026 | |
| REV. NO.: | | DATE: | | BY: | |
| 0 | 4/30/2026 | Initial Release | M.L.P. | D.S. | |
| DESCRIPTION OF REVISION: | | BY: | | APP: | |
| | | | | | |
| PANELS/PRODUCT: (MFF) MultiFin | | SHEET SIZE: B | | SCALE: X : X | |

Vertical Panel



Angle Trim



J-Channel

Notes:

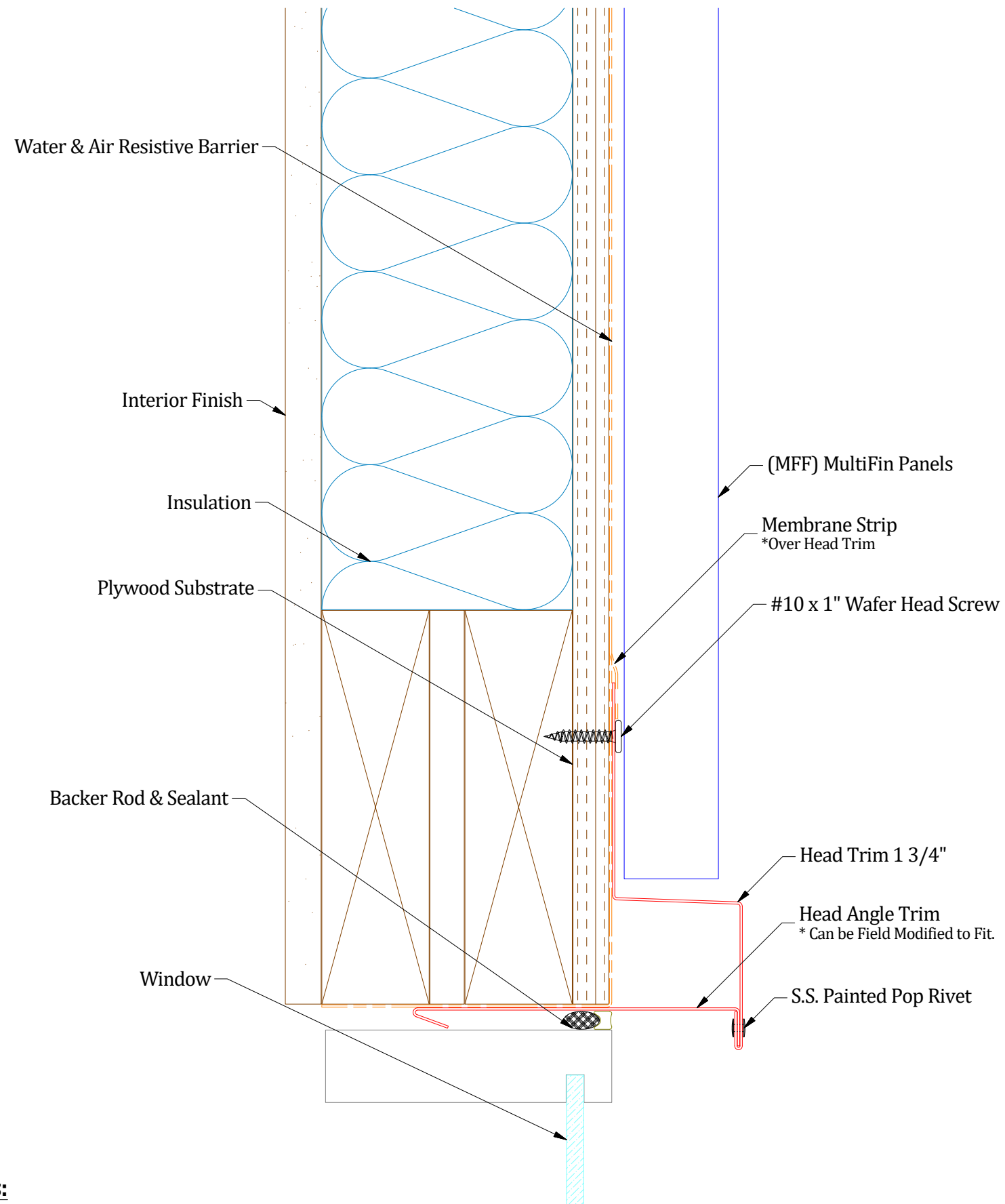
1) * denotes color side.

ATAS International, Inc.
Sustainable Solutions For A Better Future
www.atas.com | info@atas.com
800.468.1441

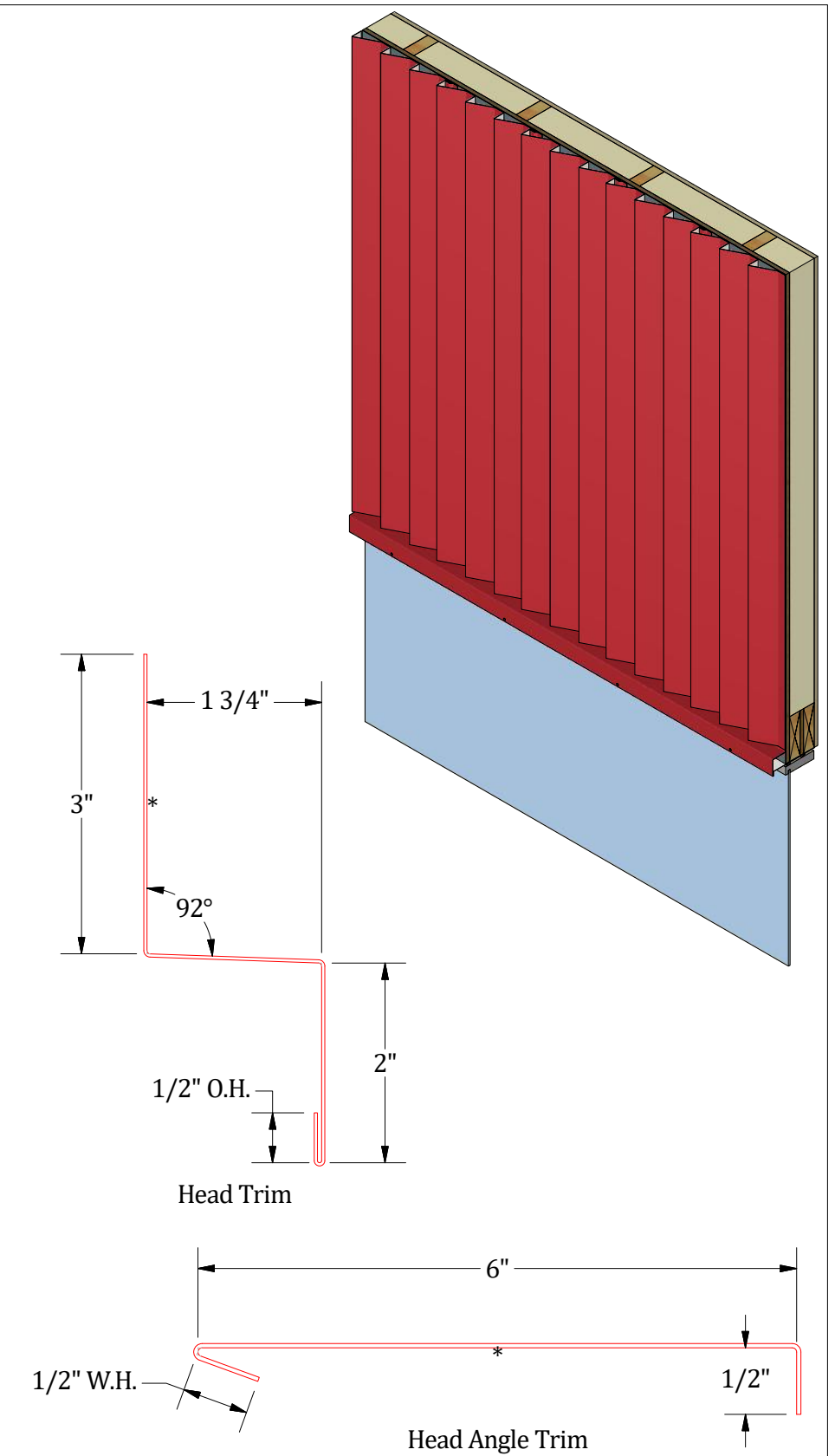
Flanged Window Sill Detail

| | | | | | | | |
|----------|-----------|-------------------------|--------|------|-----------------|-------------|-----------|
| REV. NO. | DATE | DESCRIPTION OF REVISION | BY | APP | PANELS/PRODUCT: | DWG No. | DWG DATE: |
| 0 | 4/30/2026 | Initial Release | M.L.P. | D.S. | (MFF) MultiFin | | 4/30/2026 |
| | | | | | | APP BY: | APP DATE: |
| | | | | | | D.S. | 4/30/2026 |
| | | | | | | SHEET SIZE: | SCALE: |
| | | | | | | B | X : X |

Vertical Panel



Notes:
1) * denotes color side.

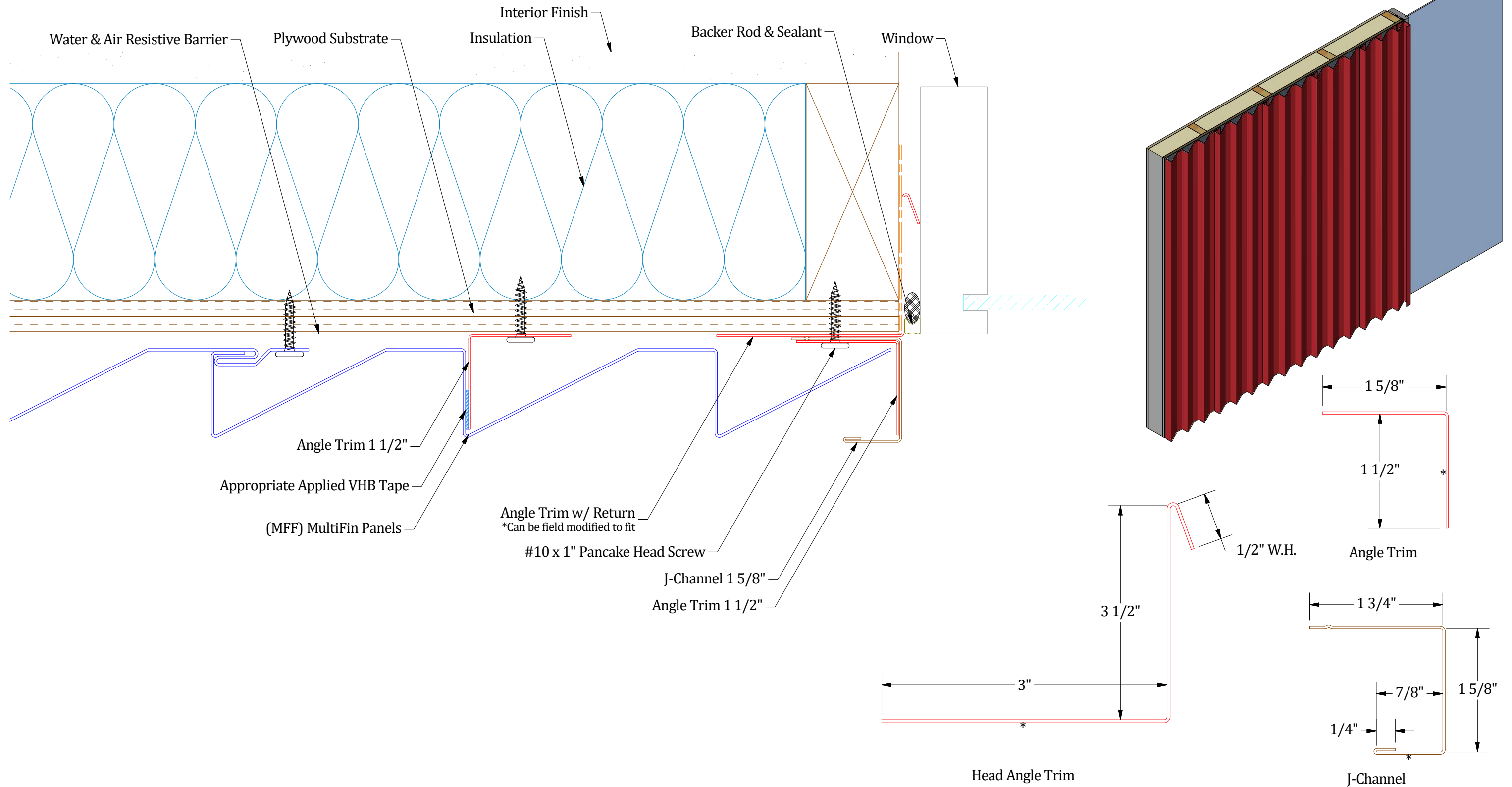


ATAS International, Inc.
Sustainable Solutions For A Better Future
www.atas.com | info@atas.com
800.468.1441

| REV. NO. | DATE | DESCRIPTION OF REVISION | BY | APP | PANELS/PRODUCT: | DWG No. | DWG DATE: |
|----------|-----------|-------------------------|--------|------|-----------------|-------------|-----------|
| 0 | 4/30/2026 | Initial Release | M.L.P. | D.S. | (MFF) MultiFin | | 4/30/2026 |
| | | | | | | APP BY: | APP DATE: |
| | | | | | | D.S. | 4/30/2026 |
| | | | | | | SHEET SIZE: | SCALE: |
| | | | | | | B | X : X |

Window Head Detail

Vertical Panel

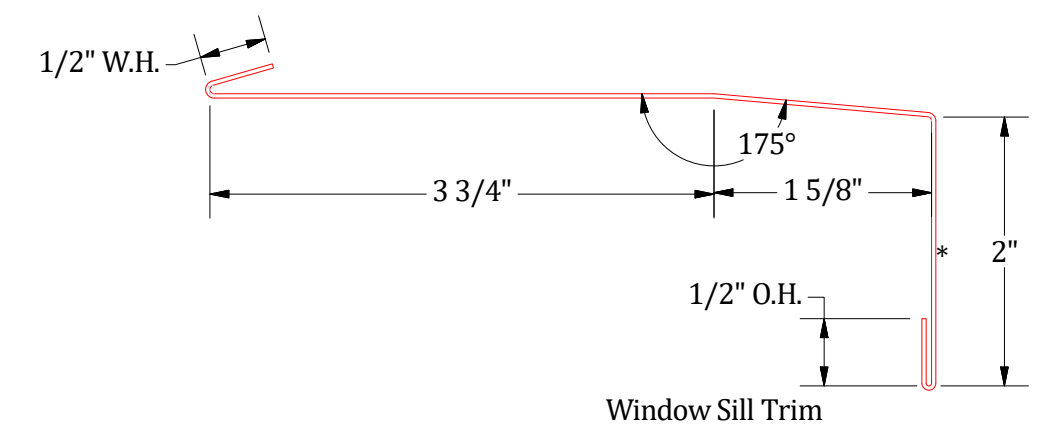
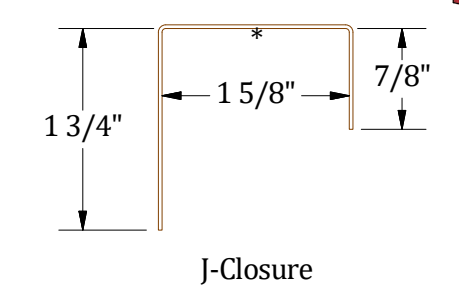
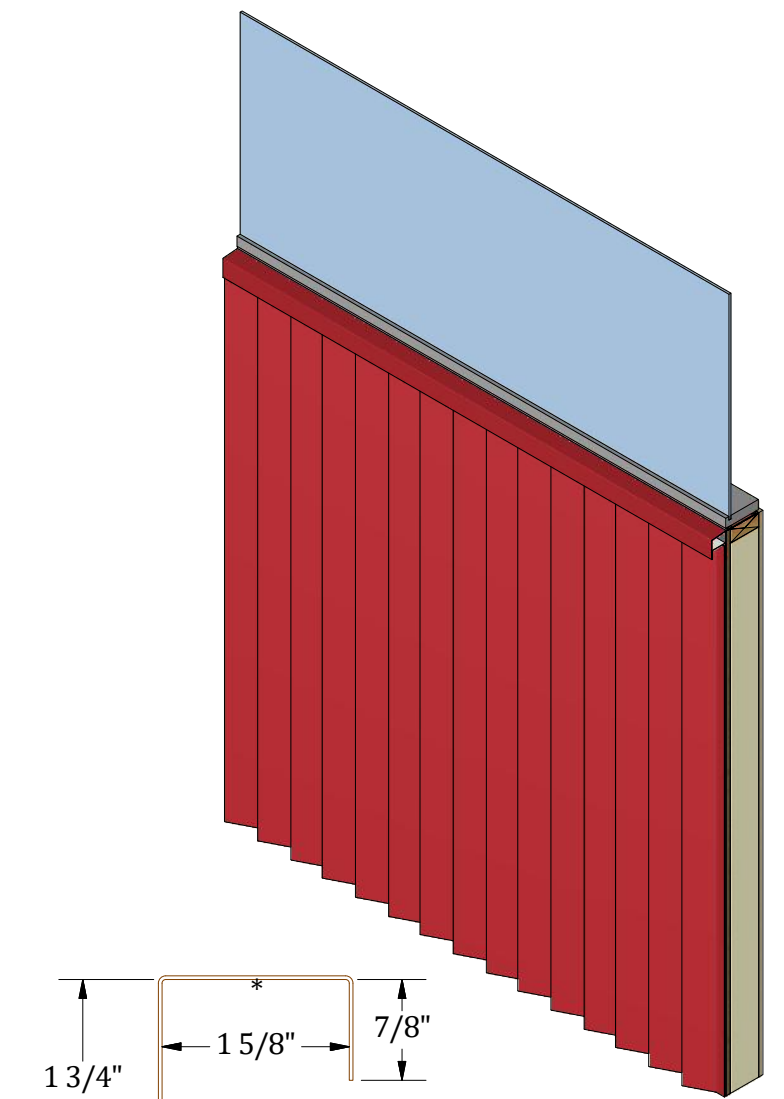
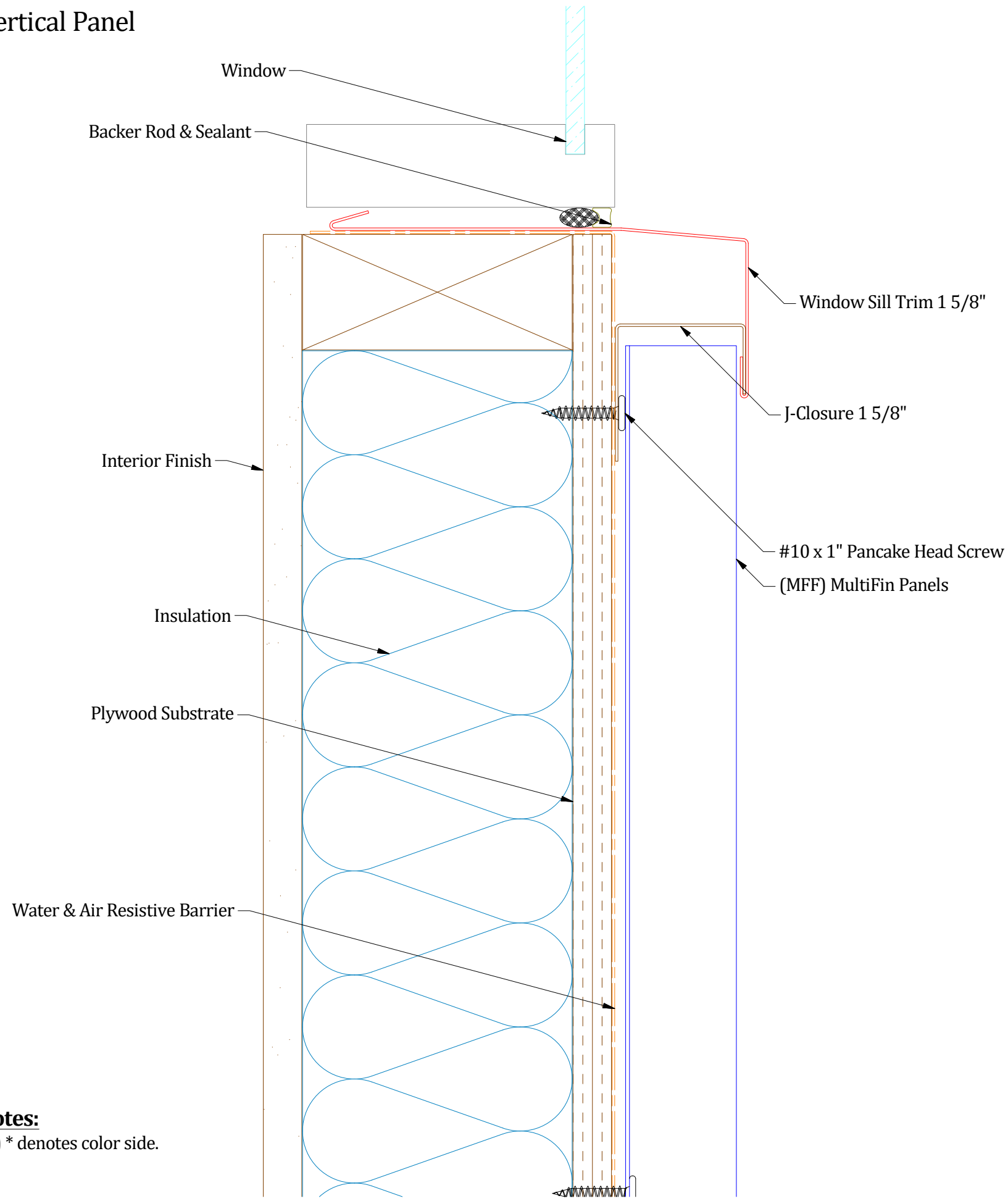


Notes:
1) * denotes color side.

ATAS International, Inc.
Sustainable Solutions For A Better Future
www.atas.com | info@atas.com
800.468.1441

| REV. NO. | | DATE | DESCRIPTION OF REVISION | BY | APP | DWG TITLE | |
|--|-----------|-----------------|-------------------------|--------|------|--------------------|--|
| 0 | 4/30/2026 | Initial Release | | M.L.P. | D.S. | Window Jamb Detail | |
| DWG No. _____ DWG DATE: 4/30/2026 APP BY: D.S. APP DATE: 4/30/2026 PANELS/PRODUCT: (MFF) MultiFin SHEET SIZE: B SCALE: X : X | | | | | | | |

Vertical Panel



Notes:
1) * denotes color side.

ATAS International, Inc.
Sustainable Solutions For A Better Future
www.atas.com | info@atas.com
800.468.1441

| | | | | | | | | | | |
|----------|-----------|-----------------|-------------------------|--------|------|--|--|-------------|------|-----------|
| REV. NO. | | DATE | DESCRIPTION OF REVISION | BY | APP | DWG TITLE: Window Sill Detail | | DWG No.: | | DWG DATE: |
| 0 | 4/30/2026 | Initial Release | | M.L.P. | D.S. | PANELS/PRODUCT: (MFF) MultiFin | | APP BY: | D.S. | APP DATE: |
| | | | | | | | | SHEET SIZE: | B | SCALE: |
| | | | | | | | | | | X : X |